



1 Blacksmiths Cottage

Stevenage Road, Little Wymondley, SG4 7JA

Guide price £360,000



1 Blacksmiths

Stevenage Road, Little Wymondley, SG4 7JA

A delightful Grade II Listed cottage dating back to 1643 located in the popular village of Little Wymondley. The cottage has been decorated throughout and retains period features which include, exposed timber beams, inglenook fireplace and vaulted ceilings.

GROUND FLOOR

ENTRANCE

Wooden front door to:

SITTING ROOM 15'9" x 13'7"
(4.80m x 4.14m)

Into recess. Inglenook fireplace with multi fuel burner. Secondary glazed windows to front and side. Beamed ceilings and dividing



section. Radiator. Downlighters.

DINING AREA 12'6" x 6'1" (3.81m x 1.85m)

Stairs to first floor. Window to rear. Picture window to kitchen. Door to:

KITCHEN 14' x 10'2" (4.27m x 3.10m)

L shaped room. Range of wall and base units with wooden work surfaces and tiled splashbacks. Double oven and ceramic hob with stainless steel extractor over. Single sink with drainer and mixer taps. Two windows to side. Door to courtyard. Radiator. Space for fridge/freezer, washing machine and tumble dryer. Wooden flooring. Downlighters. Storage cupboard. Door to:

BATHROOM 7' x 5'10" (2.13m x 1.78m)

Window to side. Radiator. Bath with shower over, low level wc and pedestal wash hand basin. Tiled floor.

LANDING

BEDROOM ONE 15'2" x 13'2" (4.62m x 4.01m)

Window to front. Radiator. Lots of character with beams and red brick chimney exposed. Access to loft space.

BEDROOM TWO 11'9" x 6'7" (3.58m x 2.01m)

Window to rear. Radiator. Over



stairs storage cupboard. Exposed beams.

OUTSIDE

GARDEN

Small courtyard with path to side access gate.

PARKING

Parking for up to two cars.

TENURE

Freehold

FLOORPLAN DISCLAIMER

Floorplans are provided for guidance only. They are not to scale and must not form any part of a legal contract or be reproduced without the written consent of a partner of Putterills.

VIEWING INFORMATION

By appointment only through Putterills of Hertfordshire, through whom all negotiations should be conducted.

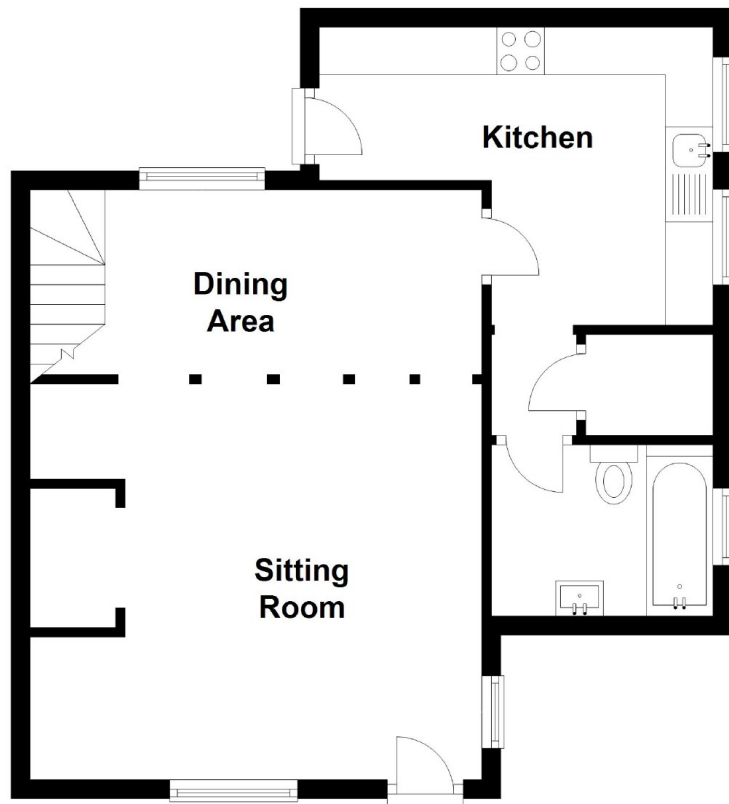
SANDS FINANCIAL MANAGEMENT

We offer impartial, whole of market mortgage advice and insurance products from a selected panel of providers. So whether you are a first-time buyer, buying to let or moving house, we will help you find the best deal. Please contact us on 01462 632222.

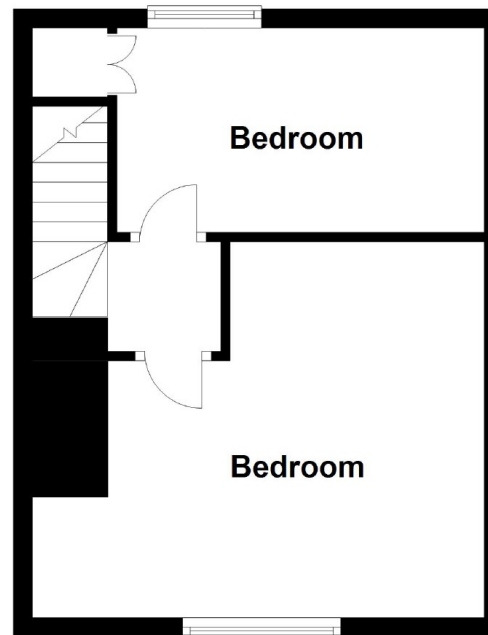




Ground Floor



First Floor



Grade II Listed
Exempt from EPC

Tel: 01462 632222

60 Hermitage Road

Hitchin

Hertfordshire

SG5 1DB

Email: hitchin@putterills.co.uk

www.putterills.co.uk

IMPORTANT NOTICE: These particulars are for guidance only. Whilst every effort has been made to ensure the accuracy of the descriptions, plans and measurements, these are not guaranteed and they do not form part of any contract. We have not tested any of the services, equipment or fittings. No persons in this firm's employment has the authority to make or give any representation or warranty in respect of the property. Interested parties should satisfy themselves as to the conditions of any such items considered material to their prospective purchase and may wish to consult an independent advisor. It should not be assumed that any of the articles depicted in these particulars are included in the purchase price.

