



PUTTERILLS

EST. 1992

Claverings, 23a Deards End Lane, Knebworth, SG3 6NL

**Price £1,125,000**



**Established village house set in an enviable location and representing fantastic development potential (subject to planning).**

This impressive double fronted detached 5 bedroom family home offers a fantastic opportunity to improve and extend, subject to normal planning consents.

Situated along one of the area's more sought-after residential turnings and with no passing traffic, "Claverings" is within close proximity to Knebworth Golf Club and sits centrally within its third of an acre plot. With mature and attractive gardens, the house benefits from gas central heating and double glazed windows. The accommodation comprises: wide central hall with staircase, dual aspect sitting room with fireplace, dining room, snug, fitted kitchen/dining room, utility room, study, cloakroom. 5 good sized bedrooms, 2 bathrooms and one en-suite. A deep gravel driveway to the front provides ample parking space and leads to an attached double width garage. CHAIN FREE!

Knebworth village provides a mainline railway station with frequent services allowing access to London Kings Cross in around 25 /35 minutes.















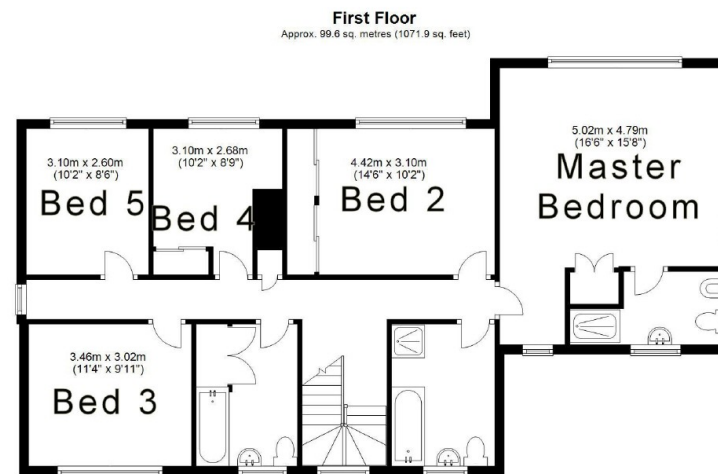
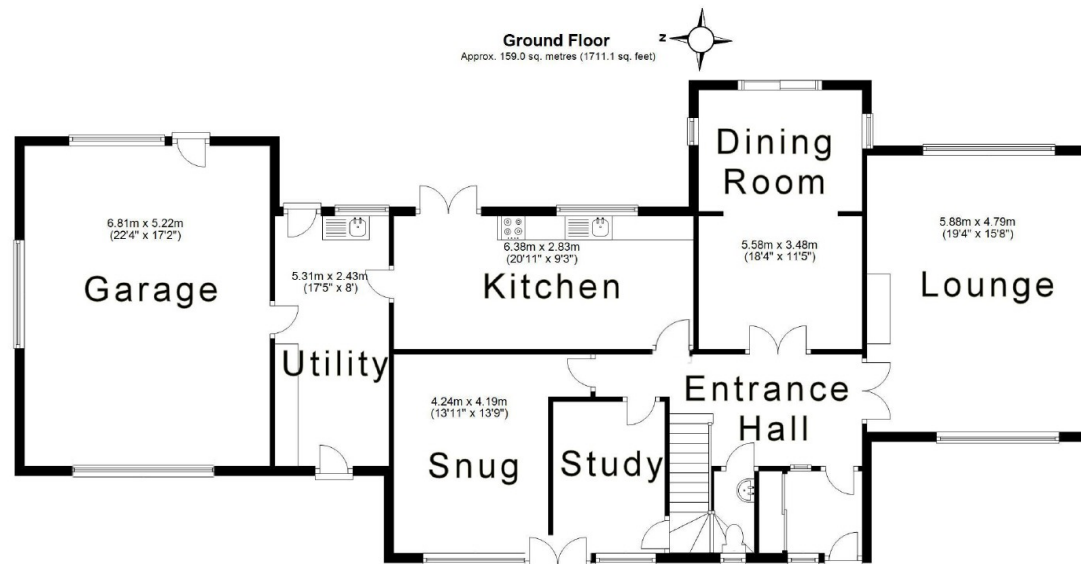












Total area: approx. 258.5 sq. metres (2783.0 sq. feet)

Includes garage area  
Plan produced using PlanUp.



PUTTERILLS

est. 1992

[putterills.co.uk](http://putterills.co.uk) | 01438 817007 | [kneb@putterills.co.uk](mailto:kneb@putterills.co.uk)

You may download, store and use the material for your own personal use and research. You may not republish, retransmit, redistribute or otherwise make the material available to any party or make the same available on any website, online service or bulletin board of your own or of any other party or make the same available in hard copy or in any other media without the website owner's express prior written consent. The website owner's copyright must remain on all reproductions of material taken from this website.