



10 Car Craig View

| Burntisland | KY3 0DS

Thorntons 
Let's get a move on!





10 Car Craig View

| Burntisland | KY3 0DS

Description

Substantial modern detached villa with stunning views over the Forth towards Edinburgh. This outstanding family home is situated in a cul-de-sac with access to the Fife Coastal Path one of Scotland's Great Trails.





Description

This modern detached family home has generous versatile accommodation featuring on the ground floor - reception hallway, cloakroom, spacious lounge with bay window, impressive family kitchen with french doors leading to the rear gardens, dining/family room and utility room.

The upper floor comprises - large master bedroom with en suite shower room and walk in wardrobe, second en suite double bedroom, two further double bedrooms, fifth bedroom/home office and family bathroom. There is an integral double garage with electric doors. The property benefits from both gas central heating and double glazing.

Externally there are attractive landscaped gardens, the enclosed rear garden features a raised deck which enjoys stunning views. The lawned front garden is flagged on one side by a double block paved driveway. Viewing is essential to fully appreciate this outstanding home and fantastic location. EPC C









Lounge	6.08m x 3.82m	19'11" x 12'6"
Dining Room	3.68m x 3.04m	12'1" x 10'0"
Kitchen/Family Room	3.68m x 6.18m	12'1" x 20'3"
Utility Room	2.54m x 1.70m	8'4" x 5'7"
Cloakroom WC	2.20m x 0.83m	7'3" x 2'9"
Master Bedroom	3.95m x 4.08m	13'0" x 13'5"
En Suite	2.95m x 2.40m	9'8" x 7'10"
Bedroom Two	3.28m x 4.47m	10'9" x 14'8"
En Suite	1.70m x 1.84m	5'7" x 6'0"
Bedroom Three	3.18m x 3.71m	10'5" x 12'2"
Bedroom Four	3.58m x 2.73m	11'9" x 8'11"
Study/Bedroom Five	2.20m x 2.56m	7'3" x 8'5"
Family Bathroom	2.44m x 2.50m	8'0" x 8'2"

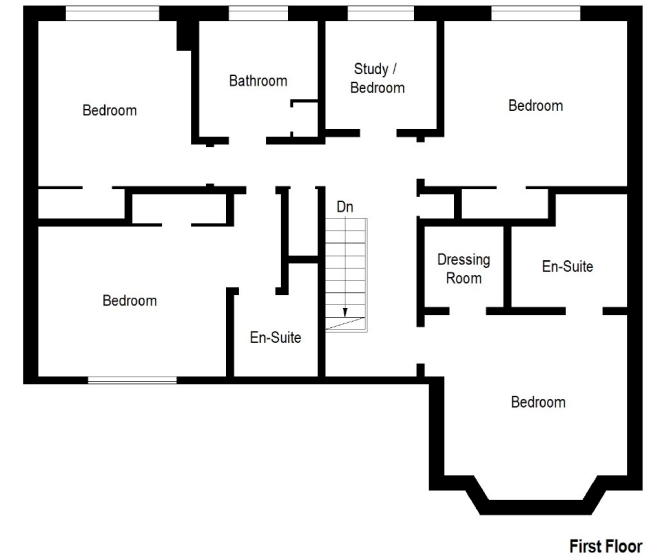


Illustration For Identification Purposes Only. Not To Scale (ID:543583 / Ref:69965)

aspc êspc fifespc pspc tspc spc

