



The Powdermills, Worcester Park

Offers in excess of
£1,250,000
Freehold

Detached House
Five Double Bedrooms
Kitchen / Dining Room
Two Reception Rooms
Five Bathrooms
79ft Garden Backing Woodland
Driveway for Several Cars
Gated Development

This stunning detached residence is situated within an exclusive gated development near the renowned River Club, in a sought after, leafy part of Old Malden.

Offering over 3000 sq ft of stylish and contemporary accommodation, the property boasts a fitted kitchen / dining room with granite work surfaces, an island with integral hob and wine cooler and a separate utility room. Strikingly large windows allow in plenty of natural light and take advantage of the woodland view to the front of the development.

Similarly to the rear, three sets of double doors from the lounge to the garden maximise the view of woodland this property backs onto, creating a peaceful atmosphere in which to relax. A separate study also has a door to the garden.



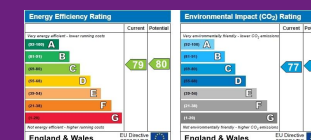
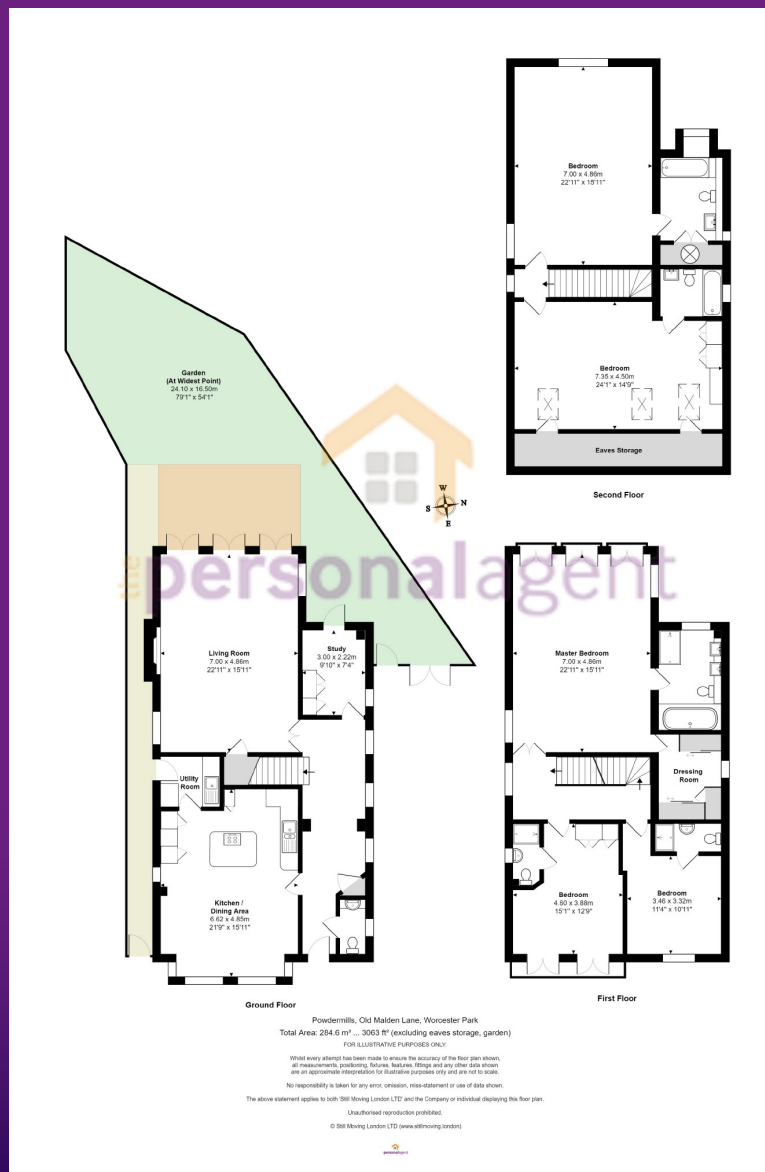
Upstairs are five extremely spacious bedrooms, all with ensuite bath or shower rooms. The impressive Master bedroom measures over 22 x 15ft, has an ensuite with a separate bath and shower, and also has an ensuite walk in wardrobe. Three of the bedrooms have Juliette balconies looking out of the South / West facing rear garden.

Malden Manor station (zone 4) provides a frequent service to central London within 30 minutes, and the nearby A3 also provides direct access by road.

A selection of handy shops surround the nearby railway station, while Worcester Park High Street offers a wide variety of shops, restaurants and bars.







Epsom Office

2 West Street
Epsom, Surrey KT18 7RG

T: 01372 745 850

Ewell Office

220 Chessington Road
West Ewell, Surrey KT19 9XA

T: 020 8394 1234

Stoneleigh Office

62 Stoneleigh Broadway
Stoneleigh, Surrey KT17 2HS

T: 020 8393 9411

Banstead Office

141 High Street Banstead,
Surrey SM7 2NS

T: 01737 333699



sales@thepersonalagent.co.uk | thepersonalagent.co.uk

Please Note: Whilst every attempt has been made to ensure the accuracy of the floorplans contained here, measurements of doors, windows and room areas are approximate and no responsibility is taken for any error, omission or mis-statement. These plans are for representation purposes only and should be used as such by and prospective purchaser. The services, systems and appliances listed in the specification have not been tested by The Personal Agent and no guarantee as to their operating ability or their efficiency can be given. All images and text used to advertise our properties are for the sole use of The Personal Agent Ltd.



