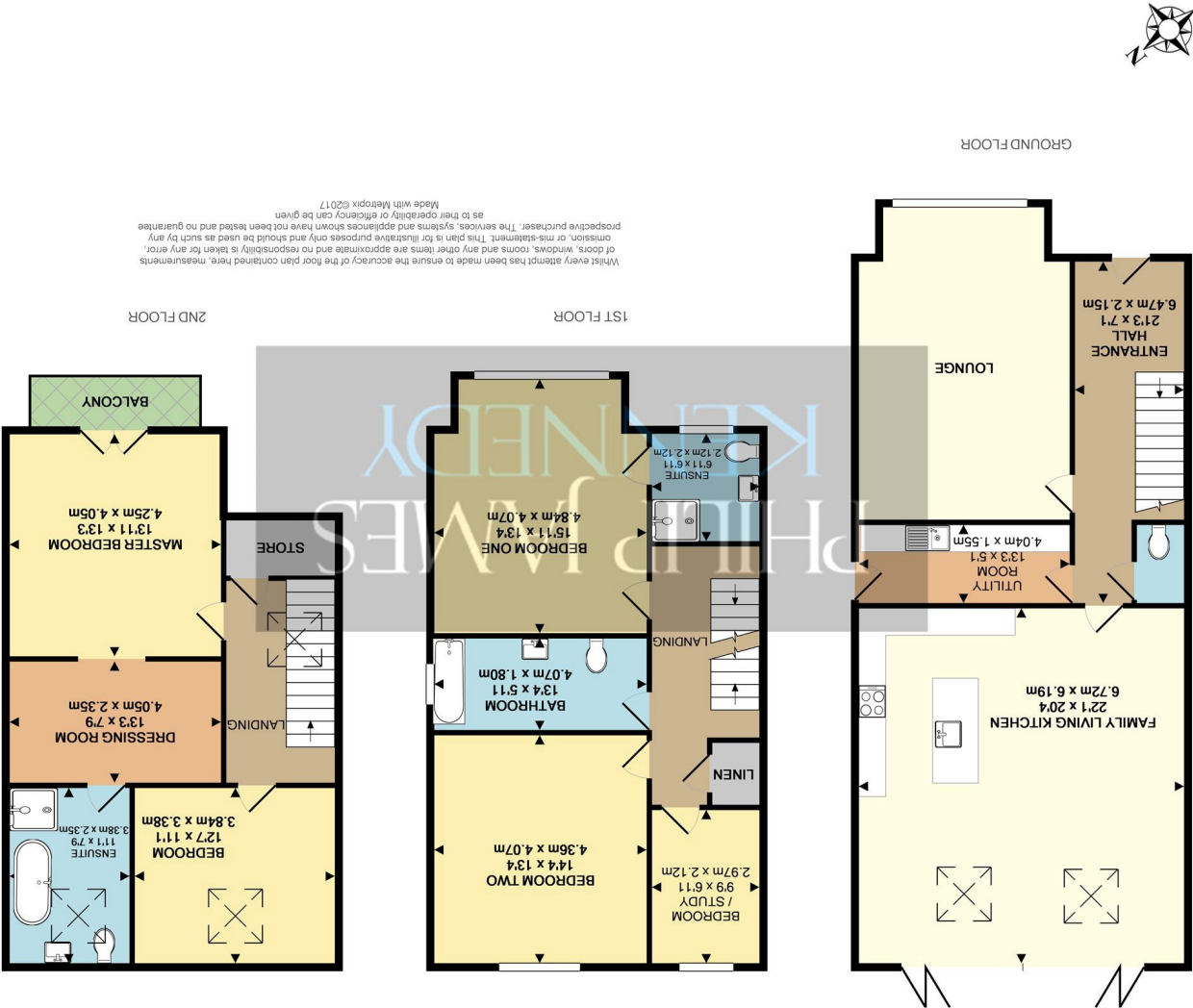


These particulars, whilst believed to be accurate are set out as a general outline only for guidance and do not constitute any part of an offer or contract. Intending purchasers should not rely on them as statements of representation of fact, but must satisfy themselves by inspection or otherwise as to their accuracy. No person in this firm's employment has the authority to make or give any representation or warranty in respect of the property.





No onward chain £849,950

The four townhouses at The Hollies have been designed and inspired by the old Victorian villas which are recognised throughout the area of Didsbury. Design features including high ceilings, large windows and period details including slate style roofs pay reference to the past while stunning sharp natural stone detailing to windows and doors give a modern twist of cool, style and contemporary architecture.

The properties are arranged over three floors with the ground floor revealing a stunning dual aspect family living kitchen, with bi-folding doors, which will be the main focal point of family life. This room dominates the ground floor with stunning views over the rear garden. There are also further rooms including a formal lounge, utility room and downstairs powder room.

The first floor enjoys three well-proportioned double bedrooms, which are served by a stylish family bathroom providing a bath with shower, wash basin and W.C. The property is further served by an en suite bathroom to the front bedroom. There is also the added extra storage space of a linen cupboard.

The second floor is certainly a stunning show stopper, there is a luxurious master suite consisting of an impressively proportioned double bedroom with a glass detailed balcony area with elevated views and ample space for a table and chairs, as well as a dressing room with fitted wardrobes. The master is served by a designer en suite bathroom. In addition there is a fifth double bedroom and linen storage room.

Externally the development is approached via a driveway accessed off Palatine Road, with attractive communal areas which are landscaped including plants, trees and shrubs. There are two allocated parking spaces for each property. To the rear are private and enclosed landscaped gardens, with paved patios suitable for alfresco dining and entertaining.

gross sq ft
Tax Band:

Service Charge: £
Rental:

"A brand new exclusive development of four luxury townhouses"

