

4 Chorlton Green, Chorlton, M21 9HS



JP&Brimelow
SALES



****VIDEO TOUR AVAILABLE**** Located in the heart of Chorlton Green is the setting of this beautifully presented, period property, internally remodelled by the current owners creating space and modern living throughout. A fantastic example of a Victorian mid-terrace home found overlooking the leafy Chorlton Green. Spacious living which extends to over 1,400 sq ft of accommodation including useful storage space in the loft.

Entry is at ground level, vestibule, entrance hallway with solid oak wooden flooring, downstairs W.C/Cloakroom, a through lounge/dining room with viewings over Chorlton Green to the front aspect. There is an open plan fitted kitchen/breakfast room with stunning worktops completing the ground floor with access out into the enclosed paved courtyard style garden.

Stairs lead to the first-floor landing that leads to two double bedrooms and an attractive white four-piece family bathroom with stained wooden flooring. The master bedroom over looks Chorlton Green and has fitted wardrobes with a cast iron feature fireplace. To the second floor there is an impressive 21 ft double bedroom featuring a window seat providing open views overlooking the Green, and a storage cupboard to complete this fabulous family home.

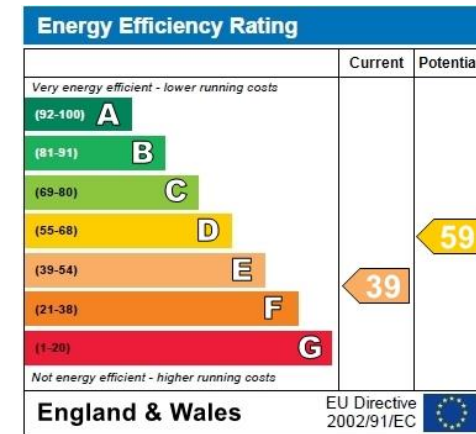
Features throughout, an alarm system, double glazed throughout, warmed by gas fired central heating. A block paved driveway to the front aspect. The excellent Ivy Green leading to the Mersey Valley at the bottom of the road, Brookburn & Chorlton CofE Primary Schools are all on your doorstep and the cafes and bars for which Beech Road is loved by so many, are a two-minute walk away.

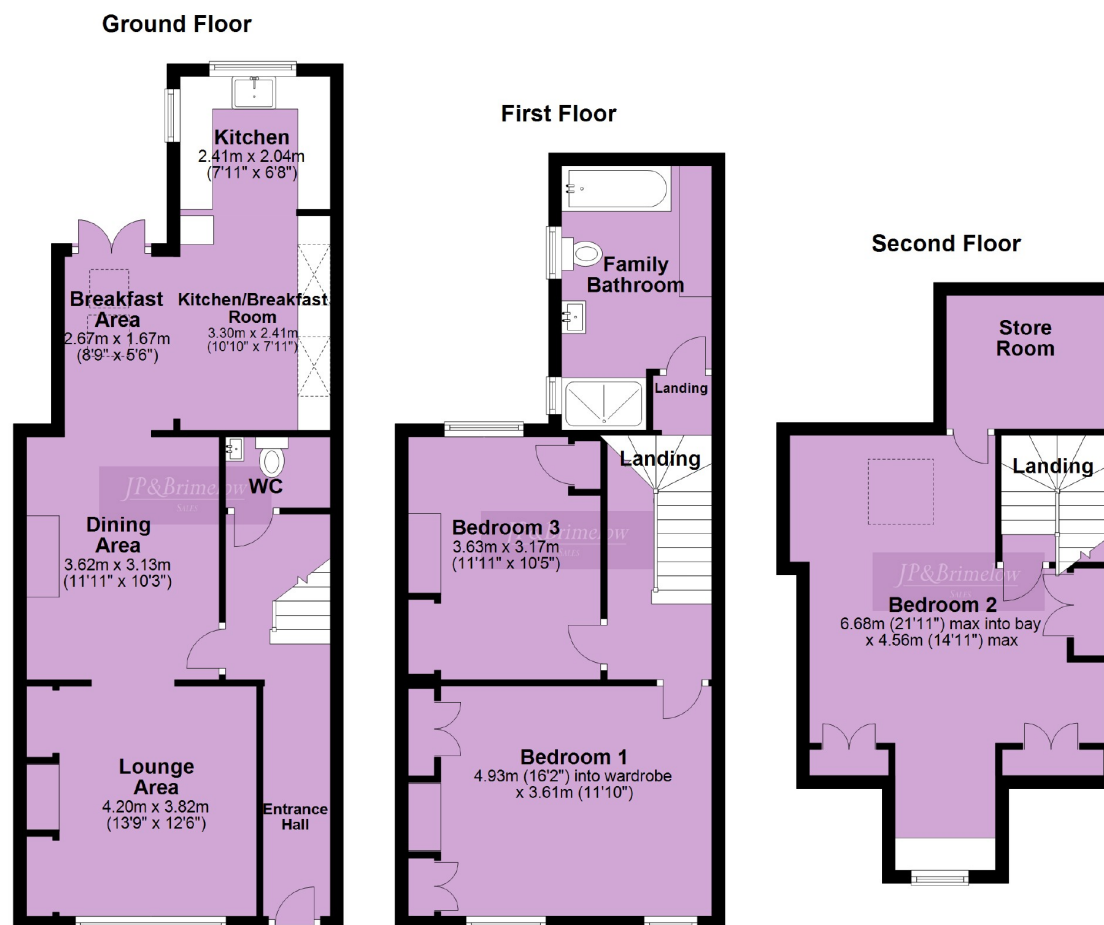
Price: £575,000



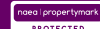


EPC Chart





Chorlton & Didsbury Sales
430 Barlow Moor Road, Chorlton, Manchester, M21 8AD
Chorlton: 0161 882 2233 Didsbury: 0161 448 0622
E: chorlton@jpbrimelow.co.uk www.jpandbrimelow.co.uk



JP&Brimelow
SALES

NOTICE: JP & Brimelow Chorlton & Didsbury Ltd for themselves and for the vendors or lessors of this property whose agents they are give notice that:

- (i) the particulars are set out as a general outline only for the guidance of intending purchasers or lessees, and do not constitute, nor constitute part of, an offer or contract;
- (ii) all descriptions, dimensions, references to the condition and necessary permissions for use and occupation, and other details are given in good faith and are believed to be correct but any intending purchasers or tenants should not rely on them as statements or representations of fact but must satisfy themselves by inspection or otherwise as to the correctness of each of them;
- (iii) no person in the employment of JP & Brimelow Ltd has any authority to make or give any representation or warranty whatever in relation to this property.



Follow us on Twitter @jpandbrimelows

