

## 2 Holwood Drive, Whalley Range, M16 8WS



*JP&Brimelow*  
SALES





**\*\*VIDEO TOUR AVAILABLE\*\*** Located on a quiet cul-de-sac here in Whalley Range is the setting of this truly stunning FIVE BEDROOMED detached family home, internally remodelled by the current owners creating space and modern living throughout. Holwood Drive can be found in a leafy location of Kingsbrook Road here in Whalley Range, within walking distance to Whalley Range Tennis Club. This attractive and deceptively spacious property has been completely transformed with a stunning extension which extend to over 2,000 sq ft of accommodation over the two floors.

Entry is at ground level, through an impressive entrance reception hallway with Karndean flooring, which has views through to the rear family/kitchen area. A downstairs W.C. There is a double bedroom with ensuite three-piece shower room to the front aspect, an impressive open plan fitted kitchen/breakfast/dining/lounge with a modern log burner and bi-folding doors with access out onto a paved patio and lawned rear garden and a home office completes this impressive ground floor accommodation.

Stairs lead to the first-floor landing with a glazed balustrade and natural light beaming through, four bedrooms, one benefits from a three-piece ensuite shower room and a beautifully fitted four-piece family bathroom.

Features throughout the property, an alarm system, double glazed throughout, warmed by a combi boiler providing gas fired central heating. A block paved driveway providing ample parking to the front aspect. The fantastic enclosed lawned garden is overlooking the cricket playing fields to the rear and is screened by a timber panelled fence with the neighbouring properties, raised and planted flower beds and a brick-built storage/boiler room. The excellent Hough End playing fields are nearby, Whalley Range Girls School & William Hulme Grammar School are all on your doorstep and the cafes and bars for which Chorlton is loved by so many, are a ten-minute drive away on Beech Road.

Price: £650,000



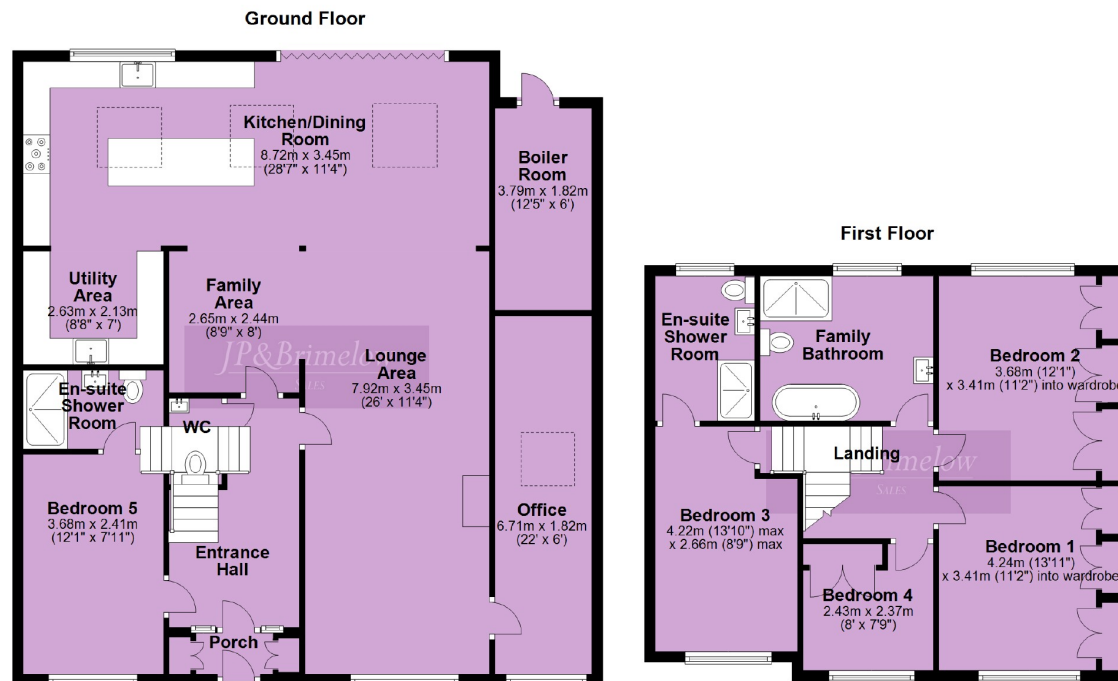




EPC Chart



Freehold Council Tax Band: D



**Chorlton & Didsbury Sales**  
 430 Barlow Moor Road, Chorlton, Manchester, M21 8AD  
 Chorlton: 0161 882 2233 Didsbury: 0161 448 0622  
 E: [chorlton@jpbrimelow.co.uk](mailto:chorlton@jpbrimelow.co.uk) [www.jpandbrimelow.co.uk](http://www.jpandbrimelow.co.uk)



***JP&Brimelow***  
 SALES

NOTICE: JP & Brimelow Chorlton & Didsbury Ltd for themselves and for the vendors or lessors of this property whose agents they are give notice that:

- (i) the particulars are set out as a general outline only for the guidance of intending purchasers or lessees, and do not constitute, nor constitute part of, an offer or contract;
- (ii) all descriptions, dimensions, references to the condition and necessary permissions for use and occupation, and other details are given in good faith and are believed to be correct but any intending purchasers or tenants should not rely on them as statements or representations of fact but must satisfy themselves by inspection or otherwise as to the correctness of each of them;
- (iii) no person in the employment of JP & Brimelow Ltd has any authority to make or give any representation or warranty whatever in relation to this property.



Follow us on Twitter @jpandbrimelows



