

Plot 3 65 Burton Road, West Didsbury, M20 1HB



JP&Brimelow
SALES

Price: £550,000

****VIDEO TOUR AVAILABLE**** This exclusive collection of FOUR/FIVE BEDROOMED homes has been built by the team at the Britannia Group. They are perfectly situated here in strolling distance to fashionable West Didsbury village and the green space of Cavendish Park.

Plot 3 is an attractive & beautifully designed, FIVE BEDROOMED, mid terrace property with accommodation spread over three floors which is light and airy. These new build properties have been built to the highest standards and using the very best in specification and finishes with a contemporary yet neutral décor with the ever-changing demands of modern living in mind. (Total living space 1539 sqft) House Type B - Pink.

A ten-minute stroll from both the centre of West Didsbury and Withington with its array of independent boutique shops, popular bars, restaurants, the Metrolink station on either Burton Road or Lapwing Lane giving you direct access into the City centre/Media City and Manchester International Airport.

With landscaped front and rear gardens with a driveway providing off road parking, an electric vehicle charging point, secure cycle storage, external decorative and security lighting.

All enquiries please email: jack@jpbrimelow.co.uk - Further details on request and to book your RESERVATION viewing appointment**.



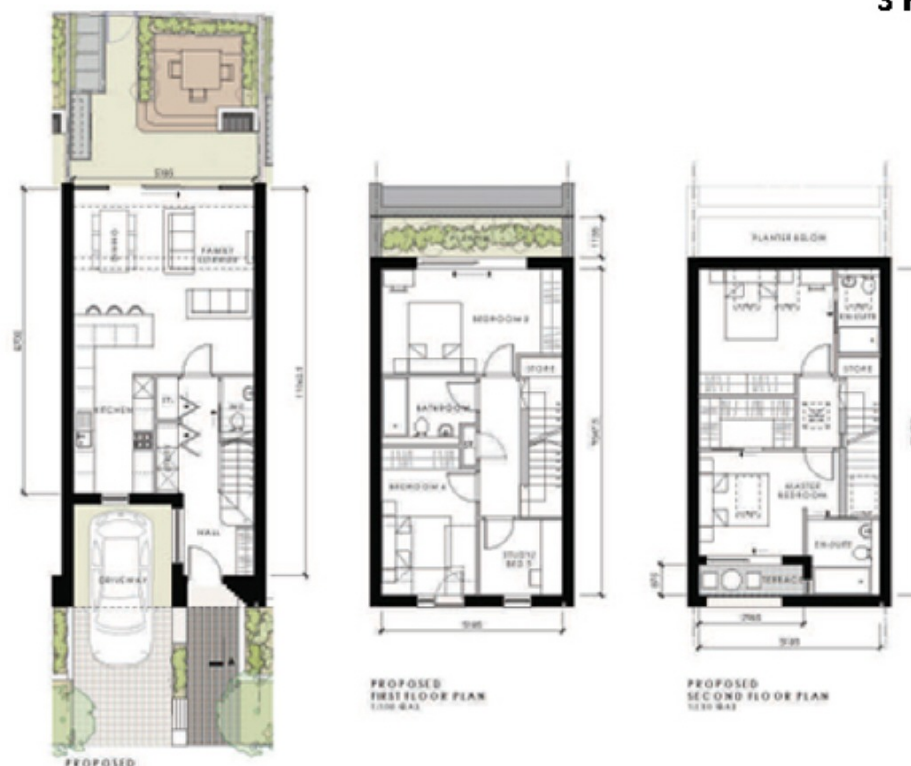


EPC Chart



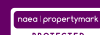
Freehold Council Tax Band:

3 Floor Town House/Terrace
4/5 bedrooms
1 bathroom 3 W/C



Britannic
Group

Chorlton & Didsbury Sales
430 Barlow Moor Road, Chorlton, Manchester, M21 8AD
Chorlton: 0161 882 2233 Didsbury: 0161 448 0622
E: chorlton@jpbrimelow.co.uk www.jpandbrimelow.co.uk



JP&Brimelow
SALES

NOTICE: JP & Brimelow Chorlton & Didsbury Ltd for themselves and for the vendors or lessors of this property whose agents they are give notice that:

- (i) the particulars are set out as a general outline only for the guidance of intending purchasers or lessees, and do not constitute, nor constitute part of, an offer or contract;
- (ii) all descriptions, dimensions, references to the condition and necessary permissions for use and occupation, and other details are given in good faith and are believed to be correct but any intending purchasers or tenants should not rely on them as statements or representations of fact but must satisfy themselves by inspection or otherwise as to the correctness of each of them;
- (iii) no person in the employment of JP & Brimelow Ltd has any authority to make or give any representation or warranty whatever in relation to this property.



Follow us on Twitter @jpandbrimelows