

JULIAN
WADDEN





Flat 1, 68 Derby Road Heaton Moor



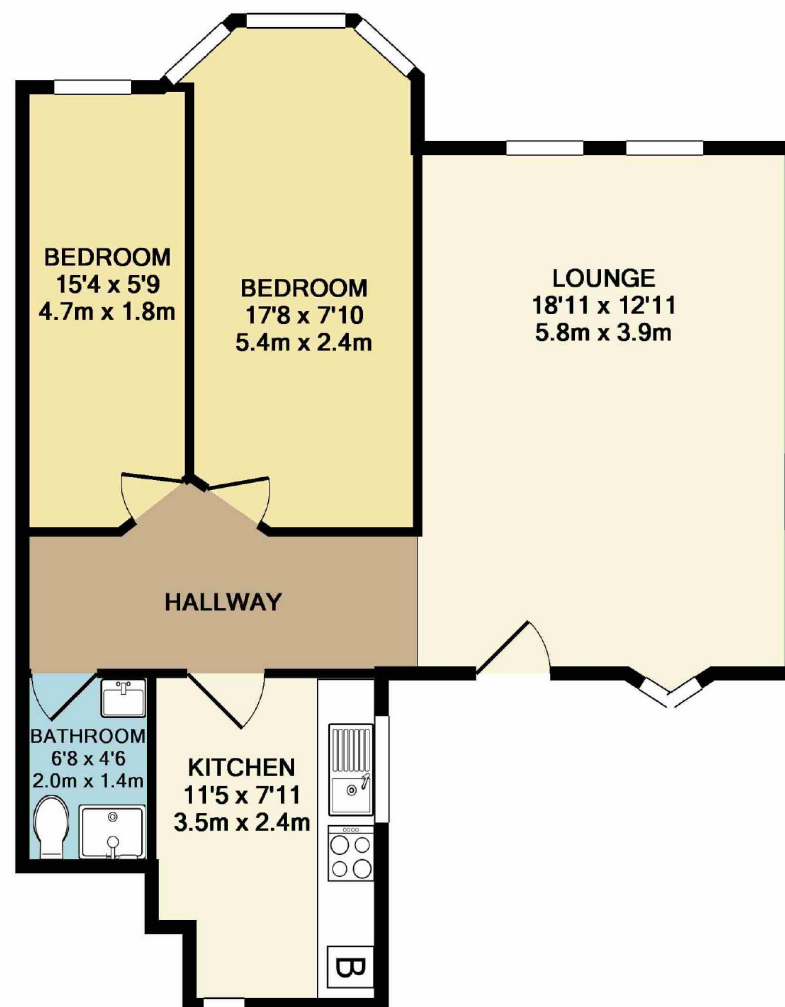
Guide price £234,950
Square Footage: 645
Council Tax Band: B
Tenure: Freehold
Service Charge: £50 PCM
Sat Nav Directions: SK4 4NF

A stunning two bedroom ground floor apartment which has been recently refurbished to a high standard. The property is situated on one of Heaton Moor's most sought after roads close to the Village boasting fashionable bars / restaurants and Heaton Chapel train station with a direct route to Manchester City Centre.

In brief the stylish accommodation comprises: private entrance, hallway, bright and spacious living area and brand new fitted kitchen with beautiful units, complimentary work surfaces and integral appliances. Lovely double bedroom with bay window, additional second bedroom and a contemporary bathroom providing a three piece suite.

Externally, off road parking and a private GARAGE are found. The property also has the added advantage of being sold with NO CHAIN. Please call for an inspection today.





TOTAL APPROX. FLOOR AREA 645 SQ.FT. (59.9 SQ.M.)
Made with Metropix ©2018

Heaton Moor Branch
14 Moorside Road, Heaton Moor, Stockport, Cheshire, SK4 4DT | 0161 432 1115
theheatons@julianwadden.co.uk | www.julianwadden.co.uk

Please note these particulars have been prepared as a general guidance only. A survey has not been carried out, nor services, appliances or fittings tested. Room sizes should not be relied upon for furnishing purposes and are approximate. Floor plans are for guidance and illustration only and may not be to scale. Neither Julian Wadden & Co, nor the vendor, accept any responsibility in respect of these particulars and if there are any matters likely to affect your decision to buy please consult your legal representative.