

**2**  
BED

# Coach House in Immaculate Order

55 Westview Close, Peacehaven, BN10 8FB



**Asking price £242,500**  
Leasehold

**phillipmann**  
we do more

[www.phillipmann.com](http://www.phillipmann.com)



## inbrief...

You need not lift a finger here as this immaculate home is quite literally in show home condition throughout.

A private covered entrance leads to the entrance hall, from here stairs ascend to the first floor. The light, bright and spacious lounge/dining room is generous enough for a whole host of furniture and is open plan to the beautiful kitchen. Here you will note an abundance of matching cupboards, drawers alongside contrasting work surfaces and not forgetting numerous built in appliances.

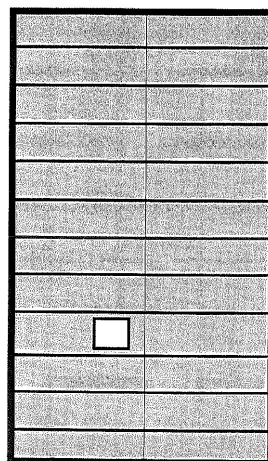
From the reception space a door flows through to an internal hallway, from here the remaining accommodation can be found. Bedroom one overlooks the front and is a decent double, bedroom two is equally spacious too. The bedrooms are complimented by a family bathroom/wc which consists of a modern suite alongside quality tiling.

Furthermore, downstairs you will find the laundry room which has plumbing for your washing machine and is accessed from the garage. Lastly storage will not be a problem as the loft has been boarded and is easily accessed from a pull down ladder.

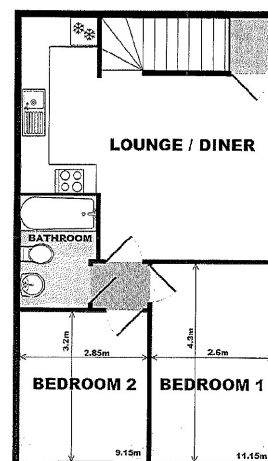


## theplan...

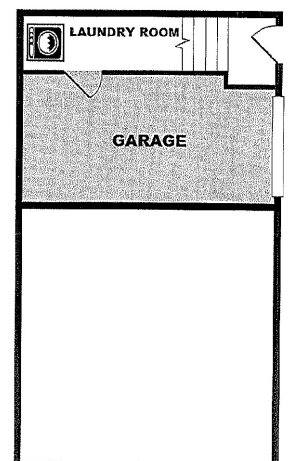
**LOFT/STORAGE**



**1st FLOOR**



**GROUND FLOOR**



Energy Rating C  
Council Tax Band C

**moreinfo...**

Peacehaven Office  
226 South Coast Road, Peacehaven, East  
01273 586622

To see more details on this & all our homes go  
[www.phillipmann.com](http://www.phillipmann.com)