

**2**  
BED

# Detached Bungalow in Central Location

228 Arundel Road Central, Peacehaven, BN10 7NU



**Price £309,950**  
Freehold

**phillipmann**  
we do more

[www.phillipmann.com](http://www.phillipmann.com)



## inbrief...

If you are looking for a modern, detached bungalow in a convenient location then look no further - this is the one for you. This attractive property is considered to be in good order with neutral decor and flooring throughout.

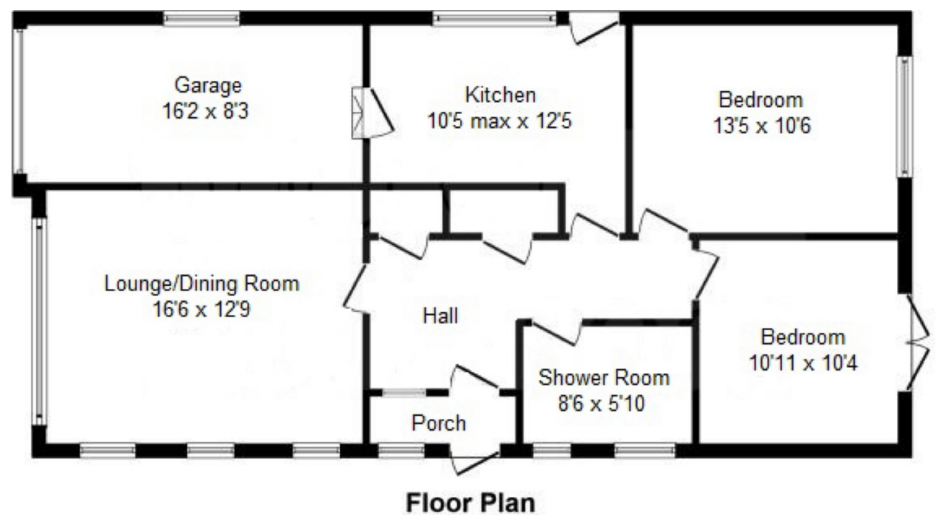
Location wise this home is moments from the South Coast Road with its regular bus services between Brighton and Eastbourne and being in this quiet cul de sac, traffic is at a minimum, perfect for those seeking peace and quiet. The Meridian Shopping centre is also close by with its range of shops, as is the local Primary and Secondary schools.

From the front door you gain access into the spacious hallway, where a storage cupboard is easily located. A door takes you into the south facing lounge/dining room where you will find plenty of space for your soft furnishings as well as a dining table and chairs. It also has a lovely large Georgian style window which overlooks the front garden with additional picture windows to the side. Nearby you will find the modern kitchen where you will find plenty of cupboards, drawers and work surfaces alongside appliance space too. A window and door to the side affords access to the rear garden and another door leads in to the integral garage. This of course has the ability to be changed into a habitable room and would certainly increase the size of the lounge or could be used as a dining room or third bedroom.

There are two double bedrooms on offer with the master being extremely generous. The second bedroom has a lovely window and door that accesses the rear garden directly. Completing the interior is the modern shower room/wc, this consists of a shower cubicle, basin and wc. The front garden is a small well maintained area and the rear garden comprises of lawn areas with a range of flower and shrub beds and a timber summer house.



## theplan...



This plan is for illustration purposes only and may not be representative of the property. Plan not to scale.

EPC Rating - D

Council Tax Band - C

moreinfo...

Peacehaven Office  
226 South Coast Road, Peacehaven, East  
01273 586622

To see more details on this & all our homes go  
[www.phillipmann.com](http://www.phillipmann.com)