

# Phase 3 Milton Mill Monifieth

Plot Number	Floor	No of Bedrooms	Total Area Incl Balcony	Price
<b><u>BLOCK E</u></b>				
E1	Ground	2	114.68 sq mts	Fixed Price £295,000
<b><u>BLOCK F</u></b>				
F2	Ground	2	85.24 sq mts	RESERVED
F3	First	3	124.75 sq mts	Fixed Price £380,000
<b><u>BLOCK G</u></b>				
G1	Ground	2	85 sq mts	Fixed Price £240,000
G3	Ground	3	112 sq mtrs	Fixed Price £320,000
G4	Ground	3	119 sq mtrs	Fixed Price £320,000
G7	First	3	112 sq mtrs	Fixed price £340,000
G8	First	3	119 sq mtrs	Fixed Price £340,000
G11	Second	3	112 sq mtrs	Fixed Price £360,000
G12	Second	3	119 sq mtrs	Fixed price £360,000



## Phase 3, Milton Mill

| Monifieth | DD5 4JF

**Thorntons**   
*Let's get a move on!*









# Phase 3, Milton Mill

| Monifieth | DD5 4JF

## Description

Located on the waterfront in the highly desirable town of Monifieth, we are pleased to launch our latest phase at Milton Mill. Phase 3 is a select development of 2/3 bedroom luxury apartments, offering panoramic, uninterrupted vistas over the Tay Estuary and beyond to Fife.







## Description

Phase 3 encompasses 16 beautiful apartments; featuring a combination of 2/3 bedrooms apartments which offer a variety of size and choice to suit every budget. Each apartment has a south facing glass balcony or terrace giving you some much sought after, private, outdoor space. This phase is constructed over 4 floors and benefits from lift access.

Of quality construction and specification, our attention to detail ensures that these apartments offer spacious, open plan living, perfect for a modern lifestyle. Each apartment comes with its own dedicated parking space, with additional visitor and disabled parking facilities throughout the site.

Attentive landscaping and common gardens available to all residents are a feature of the development, adding to the tranquility and harmony of the location.

Additionally, we are delighted to welcome the Co-operative retail on site; it is anticipated that the convenience of a small store will be enormously beneficial to the residents of Milton Mill and the immediate surrounding environs.

With excellent transport links, the A92 runs between Arbroath and Dundee immediately to the North of Monifieth, with a train and regular bus service to Dundee and its surrounding areas. Monifieth has a small retail and leisure complex to the north of the town and there is a shopping area centred around the high street, which has a variety of businesses. The city centre of Dundee is only 6 miles away to the west. Monifieth's picturesque seaside location and its association with golf play a significant role in its economy.

## Luxury Apartments

10 year NHBC

Quality Finishings

Lift & Security Entry

Gas Central Heating

Double Glazing

Feature Balconies

Private Parking

Open Sea Views

Images from Show Home









## TYPE F1 & F7

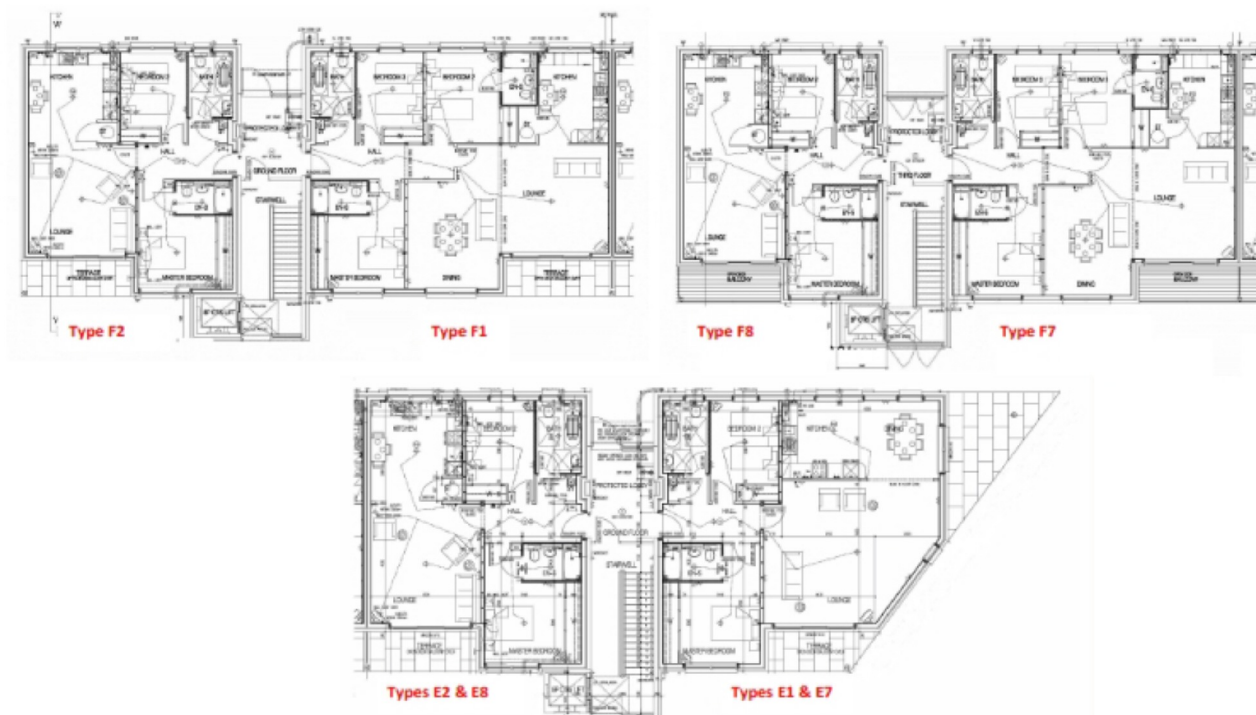
Kitchen	9'3 x 13'1	2.82m x 3.99m
Lounge	15'5 x 14'7	4.70m x 4.45m
Dining Room	12'3 x 20'7	3.73m x 6.27m
Master Bedroom & EnSuite	15'5 x 10'6	4.70m x 3.20m
Bedroom 2 & EnSuite (at widest)	13'9 x 13'1	4.19m x 3.99m
Bedroom 3	8'10 x 10'9	2.69m x 3.28m
Bathroom	5'10 x 9'4	1.78m x 2.84m

## TYPES F2, F8, E2, E8

Lounge/Kitchen (at widest)	28'4 x 14'4	8.64m x 4.37m
Bedroom 1 & EnSuite	15'5 x 10'6	4.70m x 3.20m
Bedroom 2	8'10 x 10'9	2.69m x 3.28m
Bathroom	5'10 x 9'4	1.78m x 2.84m

## TYPES E1 & E7

Kitchen/Dining	10'0 x 20'0	3.05m x 6.10m
Lounge	18'5 x 20'5	5.61m x 6.22m
Master Bedroom & EnSuite	15'5 x 10'6	4.70m x 3.20m
Bedroom 2	10'10 x 8'11	3.30m x 2.72m



aspc êspc fifêspc pspc t̂spc sp̂c

