

T: 01382 200099

E: dundee@thorntons-law.co.uk
www.thorntons-property.co.uk

Dundee | Anstruther | Arbroath | Cupar | Edinburgh
Forfar | Kirkcaldy | Montrose | Perth | St Andrews

Thorntons 
Let's get a move on!



Killinchy Cottage, 22 Holding

Barns Of Claverhouse | Dundee | DD3 0QF



Killinchy Cottage, 22 Holding

Barns Of Claverhouse | Dundee | DD3 0QF

Offers Over £240,000

Exceptional opportunity to purchase this charming cottage on the northern periphery of Dundee. The property has the benefit of a pleasant rural setting, with an abundance of wildlife whilst being within easy access Dundee and its amenities. This attractive property enjoys stunning views over the City of Dundee towards the North Fife Coast. Accommodation comprising: Utility porch, lounge with open fireplace, modern fitted kitchen, modern shower room and three double bedrooms with fitted wardrobes in bedroom one. Attributes include: oil fired central heating, double glazing, fitted floor coverings, integrated oven, hob and extractor hood. Externally there is the benefit of: raised terrace with access from the property, large fenced garden and ample off road parking.



- Detached Cottage
- Stunning Views
- Lounge
- Modern Fitted Kitchen
- Shower Room

- Three Bedrooms
- Enclosed Garden
- DG;OFCH; Extras, EPC E
- Off Road Parking
- Easy Access To Dundee





Holding 22, Barns Of Claverhouse, Dundee, DD3 0QF

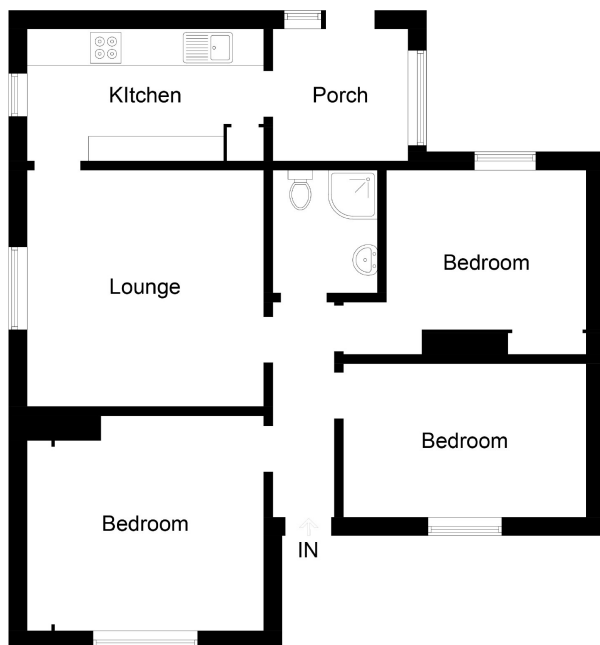


Illustration for identification purposes only, measurements are approximate, not to scale. floorplansUsketch.com © (ID545188)

| | | |
|---------------|-------------|---------------|
| Lounge | 13'0 x 13'0 | 3.96m x 3.96m |
| Kitchen | 13'0 x 7'0 | 3.96m x 2.13m |
| Utility Porch | 7'5 x 7'0 | 2.26m x 2.13m |
| Bedroom 1 | 11'5 x 10'8 | 3.48m x 3.25m |
| Bedroom 2 | 12'0 x 7'5 | 3.66m x 2.26m |
| Bedroom 3 | 10'0 x 7'5 | 3.05m x 2.26m |

Thorntons is a trading name of Thorntons LLP. Note: While Thorntons make every effort to ensure that all particulars are correct, no guarantee is given and any potential purchasers should satisfy themselves as to the accuracy of all information. Floor plans or maps reproduced within this schedule are not to scale, and are designed to be indicative only of the layout and location of the property advertised.

aspc êspc fifêspc p̂spc t̂spc ŝpc



Thorntons
Let's get a move on!

T: 01382 200099

E: dundee@thorntons-law.co.uk www.thorntons-property.co.uk

Dundee | Anstruther | Arbroath | Cupar | Edinburgh | Forfar | Kirkcaldy | Montrose | Perth | St Andrews