



8 Loch Of Liff Road

| Liff | DD2 5NE

Thorntons 
Let's get a move on!





8 Loch Of Liff Road

| Liff | DD2 5NE

Description

Excellent opportunity to purchase this beautifully presented detached chalet villa which benefits from a sunny off street location. Liff is ideally placed for nearby Dundee with ease of access to: supermarkets, retail parks, Ninewells Hospital, Technology Park, universities and city centre.





Description

Liff is a quiet hamlet and this delightful fully modernised and upgraded home features stunning accommodation spread over two levels which comprises: hallway, lounge with patio doors and contemporary wood burner, quality fitted kitchen dining, fully tiled bathroom with mains shower over bath, master bedroom having en-suite shower room, three further bedrooms two having access to a south facing balcony which affords stunning panoramic views.

The impressive list of attributes includes: marble flooring double glazing, gas fired central heating, UPVC eaves cladding, security lights, fitted wardrobes, wood panelled doors, blinds, carpets, gas range, integrated dishwasher and fridge freezer.

Externally vehicular needs are catered for by a Monobloc drive and parking area with the option to re-convert the garage if required. The low maintenance gardens feature: south facing lawn, established borders, Monobloc paths, patios, decking area and a feature high quality wooden gazebo housing the hot tub. Please note the hot Tub is available by separate negotiation.

Homes of this quality are rare to the market and early viewing is to be highly recommended. EPC - C

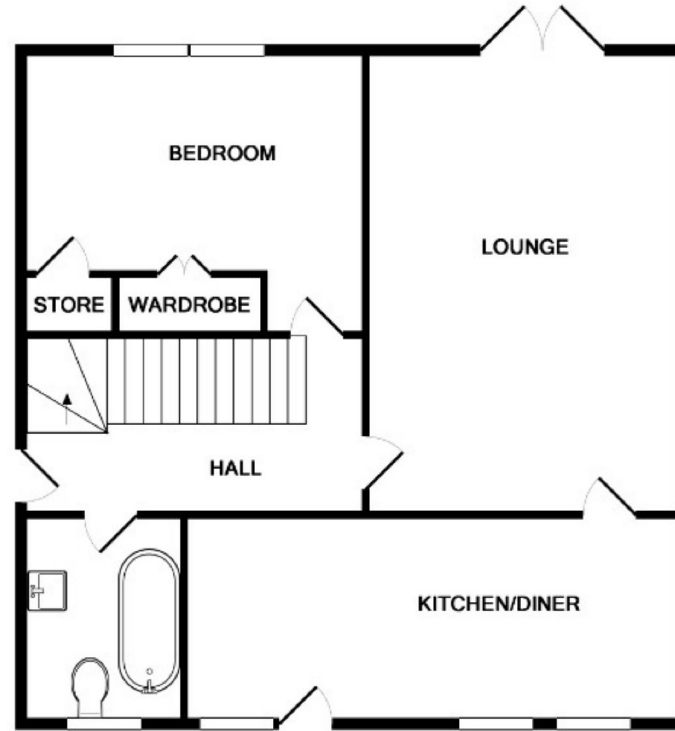




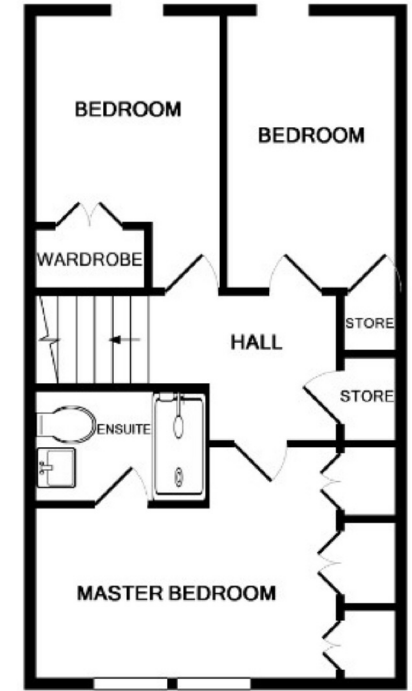




Lounge	18'1 x 13'1	5.51m x 3.99m
Kitchen/ Dining	18'6 x 9'3	5.64m x 2.82m
Bathroom	9'0 x 5'0	2.74m x 1.52m
Bedroom 1	14'0 x 10'9	4.27m x 3.28m
En-suite	8'8 x 5'6	2.64m x 1.68m
Bedroom 2	9'9 x 8'3	2.97m x 2.51m
Bedroom 3	9'9 x 8'3	2.97m x 2.51m
Bedroom 4 (Lower)	12'7 x 10'0	3.84m x 3.05m



GROUND FLOOR



1ST FLOOR

aspc êspc fifespc pspc tspc spc scotland

