



10 Panmure Court

| Dundee | DD1 3BH

Thorntons 
The right way to move



This is a lovely, spacious and naturally bright second floor apartment enjoying an excellent location close to the Waterfront and convenient for access to all city centre amenities, both universities and Ninewells Hospital.



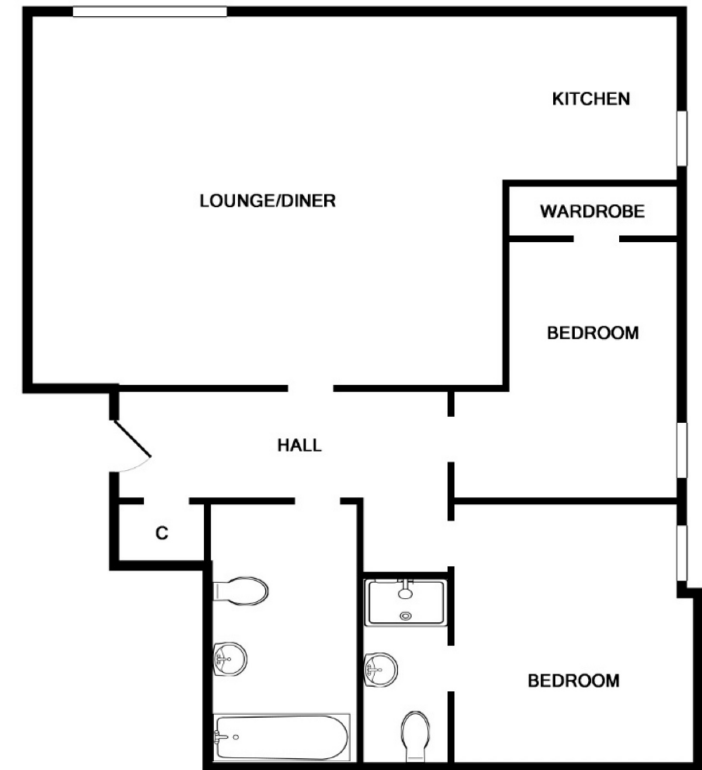
An excellent feature of the property is the generously proportioned lounge/dining room which is open to the well equipped, modern kitchen fitted with integrated appliances. There are two bedrooms, the master with en-suite shower room and a large bathroom with over bath shower. The two bedrooms and kitchen enjoys views over Victoria Dock. Attributes include; double glazing, gas fired central heating and fitted kitchen. The purpose built block is entered via security entry system into a well maintained communal stairwell and there is a lift to all floors. An allocated parking space is included in the sale. EPC - B.



- Second Floor Apartment
- Secure Entry & Lift
- Spacious Lounge/Dining Room
- Modern Kitchen
- 2 Bedrooms (Master En-suite)
- Large Bathroom
- GCH, DG, EPC - B
- Resident Parking
- Views over Victoria Dock



Lounge/Dining	24'0 x 17'8 7.32m x 5.38m
Kitchen	10'4 x 9'2 3.15m x 2.79m
Bathroom	10'8 x 5'7 3.25m x 1.70m
Bedroom 1	12'3 x 11'10 3.73m x 3.61m
En-Suite	7'6 x 4'5 2.29m x 1.35m
Bedroom 2	11'2 x 8'0 3.40m x 2.44m



aspc êspc fifespc pspc tspc spc scotland

