





Rare opportunity to purchase a freshly decorated mid-terraced townhouse over-looking City Quay Dock.

The location is ideal for central Dundee, V&A museum, train station, universities and main arterial routes connecting to all parts of the city.

This is a good example of a modern town house with the spacious accommodation comprising: hallway, W.C. lower lounge/bedroom, useful utility, lounge/dining having Juliet balcony, fitted kitchen/dining, family bathroom and three further bedrooms one having an en-suite shower room. The impressive list of attributes comprises: open views to City Quay Dock, gas central heating, double glazing, integrated fully lined garage, mirrored wardrobes, Juliet balconies, integrated oven, hob, extractor and fridge/ freezer. Externally there is a small south facing courtyard style garden plus off-street parking and access to the garage to the front.

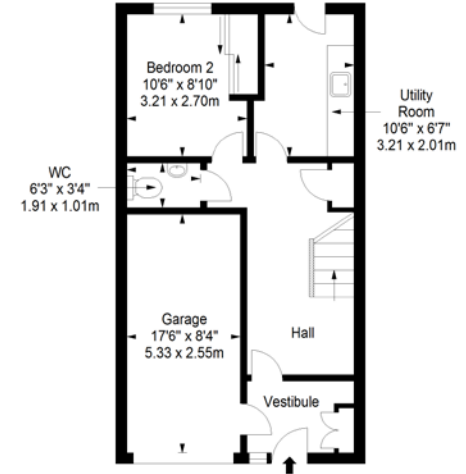
This is a high quality home in a desirable location and early viewing is to be highly recommended.

EPC Rating: C

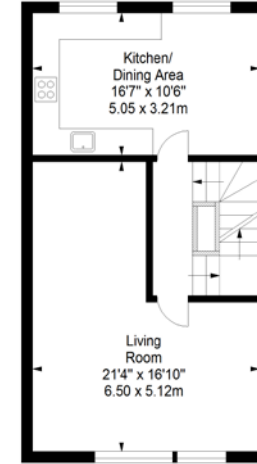




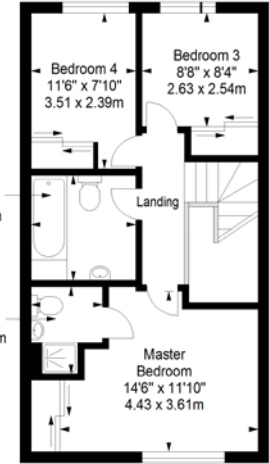
Ground Floor
Approx. 50.2 sq. metres (540.4 sq. feet)



First Floor
Approx. 50.2 sq. metres (540.4 sq. feet)



Second Floor
Approx. 50.2 sq. metres (540.4 sq. feet)



Total area: approx. 150.6 sq. metres (1621.2 sq. feet)

WHITEHALL HOUSE, 33 YEAMAN SHORE, DUNDEE, DD1 4BJ, UNITED KINGDOM | 01382 200099 | WWW.THORNTONS-PROPERTY.CO.UK | DUNDEEEA@THORNTONS-LAW.CO.UK

Branches: Anstruther | Arbroath | Cupar | Dundee | Edinburgh | Forfar | Kirkcaldy | Montrose | Perth | St Andrews

While these Sales Particulars are believed to be correct, their accuracy is not warranted and they do not form any part of any contract. All sizes are approximate.