



17 The Maltings

Victoria Street | Carnoustie | DD7 7LF

Thorntons 
Let's get a move on!

| 17 The Maltings | Carnoustie | DD7 7LF

Offers Over £165,000



Attractive second floor apartment situated in a popular modern development benefiting from South facing views over the Golf Course and towards the sea.



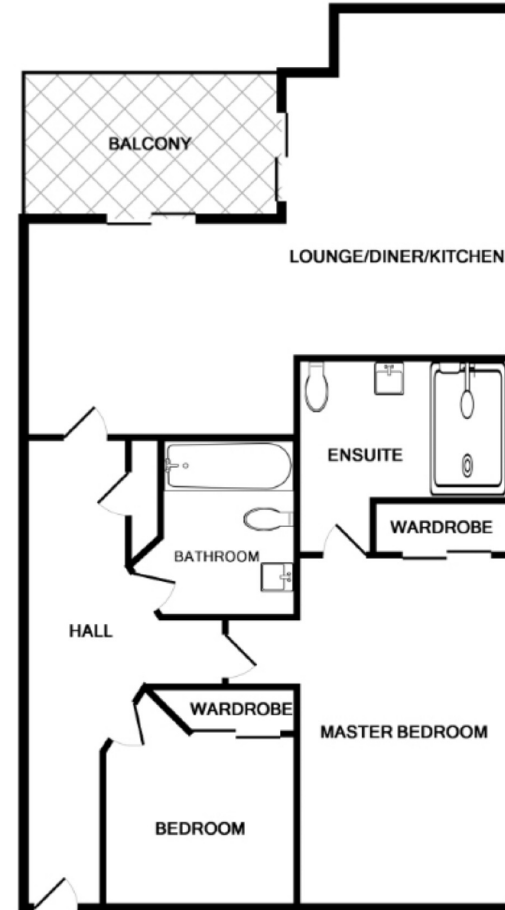
The property which benefits from security entry system, lift facilities and gas central heating comprises: entrance hall with all accommodation leading off. Bright spacious lounge with patio doors leading to South facing terrace, ample space for occasional furniture, open plan to dining kitchen. Kitchen benefits from wall mounted and base units, contrasting work surfaces incorporating sink unit and drainer, integrated washing machine, American style fridge freezer, oven, hob, extractor, ample space for dining suite, additional double glazed patio doors leading to terrace, two south facing windows. Master bedroom located to the rear of the property with double glazed window, double mirror fronted wardrobe, access to en suite which benefits from three piece white suite comprising w.c, wash hand basin and separate shower cubicle and heated towel rail. Bedroom two is also located to the rear of the property with double glazed window and double mirror fronted wardrobe. Family bathroom fitted with three piece white suite, comprising w.c, wash hand basin and bath, heated towel rail.

Externally there is an allocated parking space and additional visitors parking. Viewing is highly recommended to appreciate this attractive family apartment.



- Attractive Second Floor Apartment with South Facing Views
- Entrance Hall, Lounge
- Open Plan Dining Kitchen
- Master Bedroom, E/S
- Bedroom 2, Family Bathroom
- South Facing Private Terrace
- Security Entry, Lift
- D.G., Gas C.H. EPC-B
- Allocated Parking
- Viewing Highly Recommended

Lounge	13'8" x 12'10" 4.17m x 3.91m
Dining Kitchen	23' x 11'5" 7.01m x 3.48m
Master Bedroom	13'11" x 8'5" 4.24m x 2.57m
En Suite	6'10" x 5'3" 2.08m x 1.60m
Bedroom	9'4" x 8'6" 2.84m x 2.59m
Bathroom	6'3" x 5'6" 1.91m x 1.68m



aspc êspc fifespc pspc tspc spc scotland

