



27 Riverside Park

| Blairgowrie | PH10 6GB

**Thorntons**   
*Let's get a move on!*



This is an attractive, ground floor apartment forming part of a modern block situated in a cul de sac with easy access to the town centre and riverside walks.



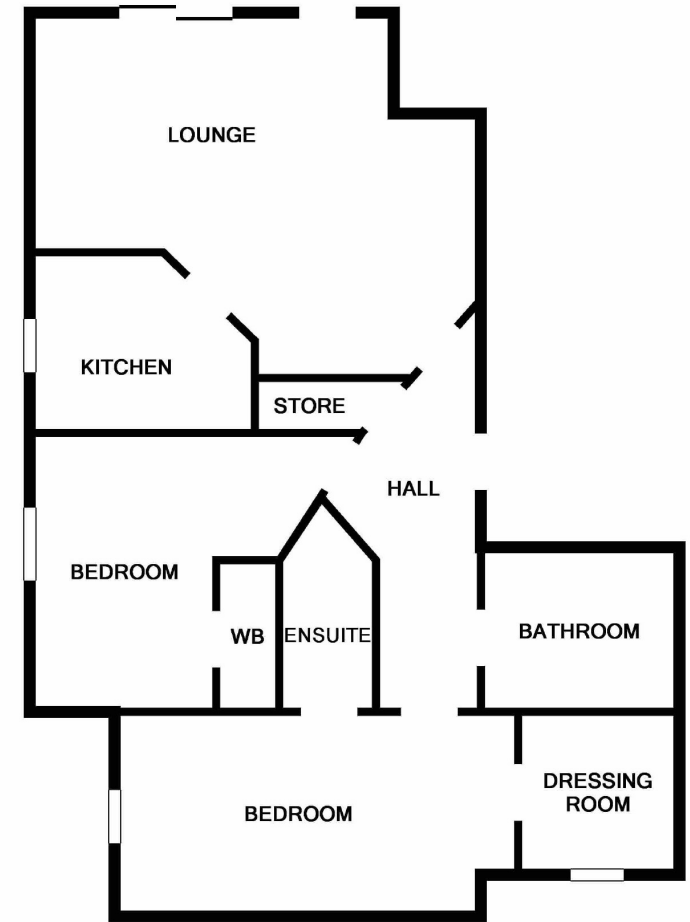
The building is entered via a secure entry system and affords well laid out, spacious accommodation which is neutrally decorated and benefits from gas central heating and double glazing. An open hallway gives access to a lovely lounge/dining room with patio doors to a small patio area out front. The modern fitted kitchen finished benefits from integrated appliances. A good size master bedroom has an ensuite, a dressing room fitted out with hanging rails and shelving and benefits from natural light. The second bedroom has fitted wardrobes and a good size bathroom completes the accommodation. This is a great property to retire to or could have good letting potential.





- Ground Floor Apartment
- Modern Block in Cul-de Sac
- Easy Access to Town Centre
- Lounge/Dining Room
- Modern Kitchen with Appliances
- Master Bedroom with Dressing Room and En Suite
- 2nd Bedroom
- Bathroom
- GCH, Double Glazing, EPC -C
- Secure Entry

Lounge/Dining Room	18'11x 17'11 at widest 5.77m x 5.46m at widest
Kitchen	11'7 x 7'9 3.53m x 2.36m
Master Bedroom	16'10 x 8'8 5.13m x 2.64m
Dressing Room	6'8 x 6'1 2.03m x 1.85m
En Suite	7'4 x 4'1 2.24m x 1.24m
Bedroom 2	13'1 x 10'0 3.99m x 3.05m
Bathroom	8'1 x 6'3 2.46m x 1.91m



Whilst every attempt has been made to ensure the accuracy of the floor plan contained here, measurements of doors, windows, rooms and any other items are approximate and no responsibility is taken for any error, omission, or mis-statement. This plan is for illustrative purposes only and should be used as such by any prospective purchaser. The services, systems and appliances shown have not been tested and no guarantee as to their operability or efficiency can be given  
Made with Metropix ©2018