



COLLEGE FARM COTTAGE, COLLEGE FARM, FILKINS GL7 3RD

£900 Per Calendar Month

- Available early October
- Unfurnished
- Rural location
- Countyside views
- Sitting room with woodburner
- Kitchen/diner
- Two bedrooms
- Garden
- Parking
- Water included in the rent

wychwoods.com



OFFICES

BURFORD

Providence House
49 High Street
Burford
OX18 4QA
01993 824800
burford@wychwoods.com

MILTON - UNDER - WYCHWOOD

Dashwood House
Shipton Road
Milton - under - Wychwood
OX7 6JH
01993 832288
milton@wychwoods.com

LETTINGS

Providence House
49 High Street
Burford
OX18 4QA
01993 627837
let@wychwoods.com

Further Property Information

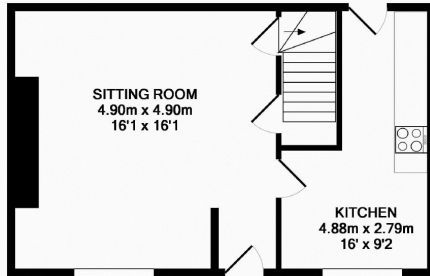
Contact:

Lettings Office
01993 627837

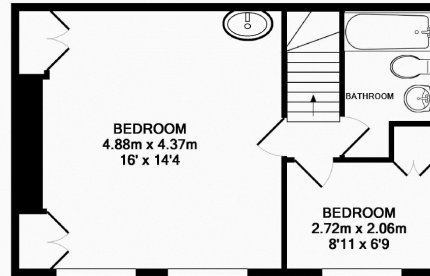
Local Authority:

West Oxfordshire District

Council Tax Band: C



GROUND FLOOR

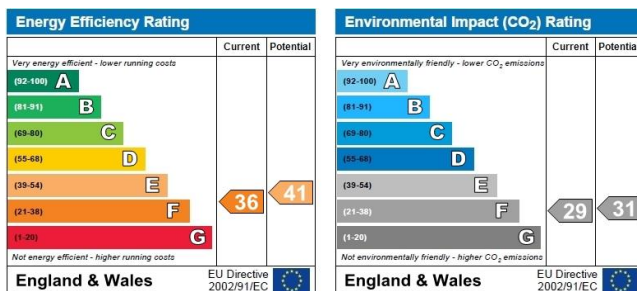


1ST FLOOR

These measurements are the maximum & are approximate only, they do not take into account minimum measurements. Drawn by E3 Property Services - www.e3ps.co.uk
Made with Metropix ©2013

Wychwoods Estate Agents are delighted to offer this pretty two bedroom cottage, located in a rural position just outside the popular village of Filkins. The property is situated at the end of a farmhouse and benefits from many period features, ample storage and countryside views from all windows. Accommodation comprises sitting room with wood burning stove and flag stone floor, and kitchen/diner on the ground floor. On the first floor are two bedrooms and a bathroom. Outside there is a good sized, mature garden and plenty of parking.

Rent excludes the tenancy deposit and the other charges or fees which are payable, further information will be provided by Wychwoods upon request.



These sales details are prepared for the convenience of prospective purchasers, and are a general outline for guidance. They do not constitute part of an offer or contract. All descriptions, dimensions, references to permission for use or occupation, and any other details, are given in good faith and are believed to be correct, but any intending purchaser should not rely on them as statements or representations of fact, but must satisfy themselves by inspection or otherwise as to the correctness of these details. Photographs contained in these details may have been taken with a wide angle lens.