



2 Shepherd Close, Highcliffe, BH23 5PF

PETTENGELLS
ESTATE AGENTS

2 Shepherd Close, Highcliffe, BH23 5PF

- Newly refurbished
- Three double bedrooms with en suites
- Deceptively spacious and well proportioned accommodation
- Superb kitchen with integrated appliances, opening onto sitting/dining room
- Separate utility room
- Sought after residential cul-de-sac
- Delightful well stocked rear garden
- Ample off road parking
- Garage and carport
- Highcliffe school catchment
- No forward chain
- EPC: Band C
- Council Tax: Band E



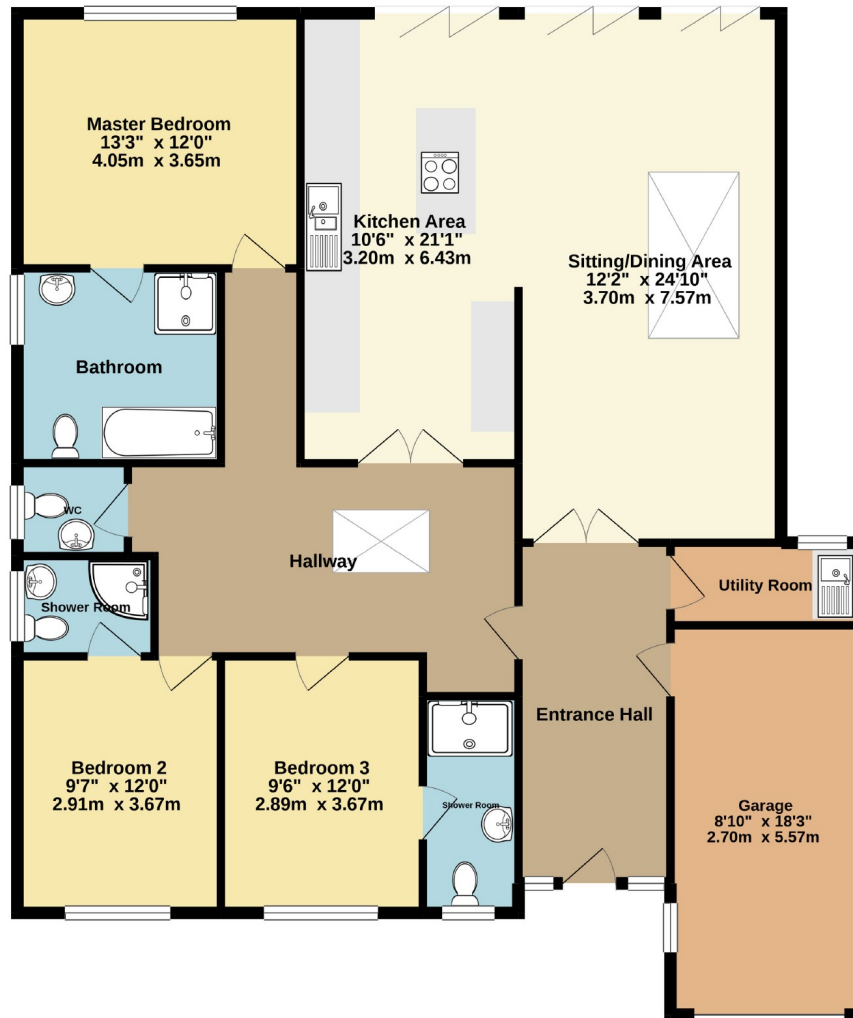
£699,950



AN IMPRESSIVE AND EXTREMELY SPACIOUS THREE BEDROOM BUNGALOW, standing in attractive good size gardens in this sought after residential cul-de-sac within walking distance of Hinton Admiral Railway Station, Highcliffe village and local schools. The property, which has undergone a comprehensive refurbishment and extension programme offers well proportioned accommodation comprising: superb kitchen opening onto sitting/dining area and three bedrooms, all with en-suites. Externally, the property has a delightful well stocked rear garden and, to the front, there is a driveway providing ample off road park and access to integral garage and carport. An internal inspection is highly recommended.

Ideally situated in a premier location, the property is within easy reach of some of the area's most beautiful beaches and unspoilt coastline. Highcliffe village centre, Highcliffe Castle and Golf Course are within close proximity. The nearby town of Christchurch has a wide range of amenities. More extensive facilities can be found further afield at Bournemouth.

GROUND FLOOR
1611 sq.ft. (149.6 sq.m.) approx.



TOTAL FLOOR AREA : 1611 sq.ft. (149.6 sq.m.) approx.

Whilst every attempt has been made to ensure the accuracy of the floorplan contained here, measurements of doors, windows, rooms and any other items are approximate and no responsibility is taken for any error, omission or mis-statement. This plan is for illustrative purposes only and should be used as such by any prospective purchaser. The services, systems and appliances shown have not been tested and no guarantee as to their operability or efficiency can be given.
Made with Metropix ©2021

