



28a Woodland Way, Highcliffe, BH23 4LQ

PETTENGELLS
ESTATE AGENTS

28a Woodland Way, Highcliffe, BH23 4LQ

- Impressive three double bedroom bungalow
- Lovely front and rear gardens
- Large detached garage
- Established and popular residential area
- En Suite to main bedroom
- Spacious kitchen / breakfast room
- Delightful conservatory
- Walking distance of Golf course and Steamer Point Nature Reserve
- Approx 1320 sq ft of accommodation
- Double electric gates on driveway
- EPC Rating: Band C
- Council Tax: Band E

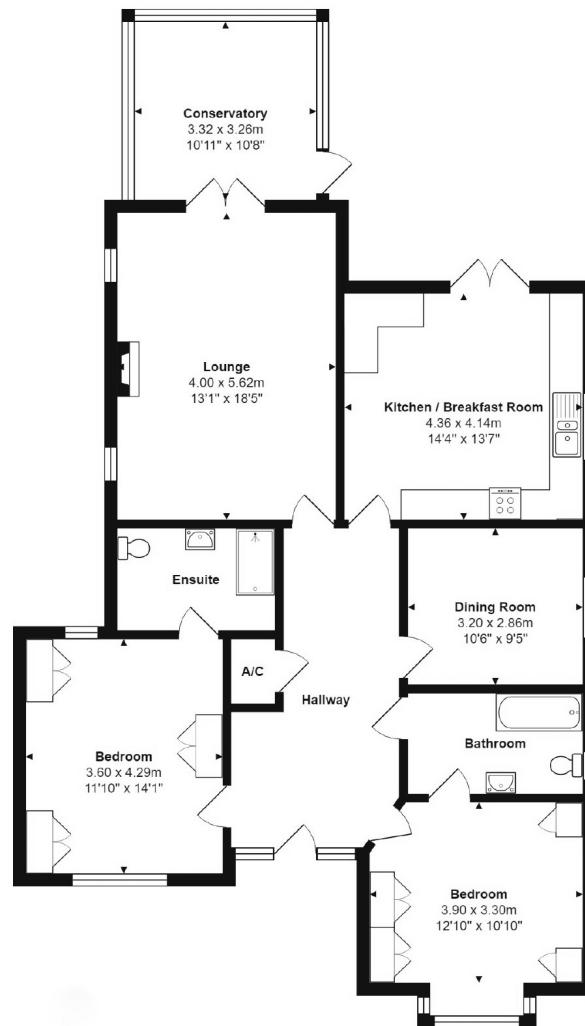


£725,000



Built approximately 15 years ago and standing in superb gardens this spacious three bedroom bungalow which has been carefully maintained by the current owner is offered for sale chain free. Located in this sought after location with Highcliffe Castle Golf Course and Steamer Point Nature Reserve within walking distance. Features of the property include : Spacious entrance hall, three double bedrooms, lovely sitting room and conservatory, large detached garage and electric gates to the side, en suite to main bedroom and well tended gardens.

Ideally situated within close proximity of some of the area's most beautiful beaches and unspoilt coastline being within close proximity of local shops, the nearby towns of New Milton and Christchurch have a wide range of amenities with more extensive facilities further afield at Bournemouth.



Total Area: 122.7 m² ... 1321 ft²
 All measurements are approximate and for display purposes only

