



21 Shelley Close, Highcliffe, BH23 4HW

**PETTENGELLS**  
ESTATE AGENTS



## 21 Shelley Close, Highcliffe, BH23 4HW

- Delightful, detached bungalow
- South westerly facing rear garden
- Located on the west side of Highcliffe
- Within walking distance of Friars Cliff with its sandy bathing beaches
- Three bedrooms
- Two receptions
- UPVC & double glazed conservatory
- Bathroom & separate WC
- Detached garage & driveway
- Enclosed garden
- No forward chain
- Council Tax: Band E
- EPC Rating: Band D



**£535,000**



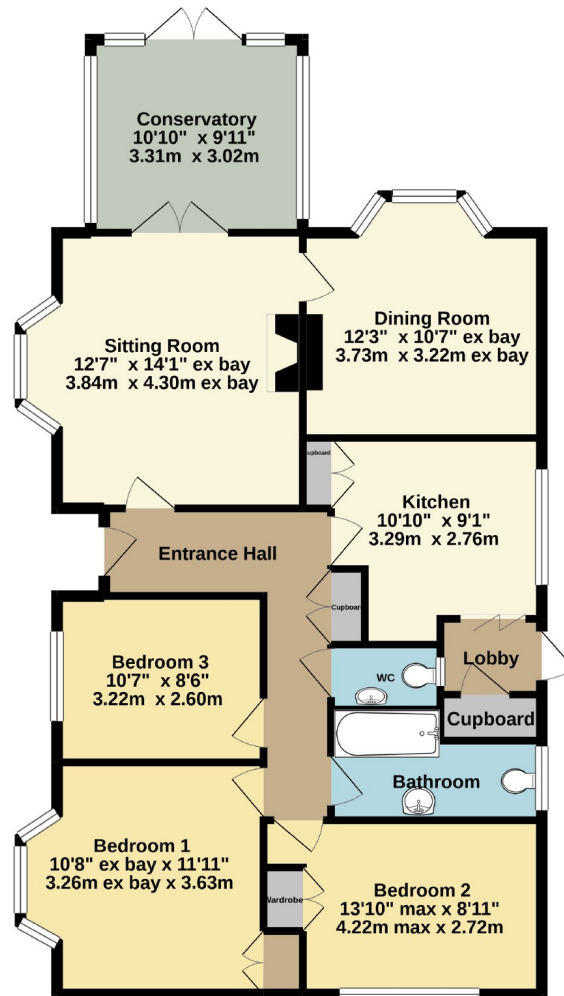
**A THREE BEDROOM, TWO RECEPTION DETACHED BUNGALOW**, offering scope for improvement, ideally located within walking distance of Friars Cliff with its sandy bathing beaches.

Features of this bungalow include: Reception hall, three bedrooms, sitting room and separate dining room, double glazed conservatory overlooking rear garden, kitchen, bathroom and separate WC. Externally, there is a driveway leading to a detached garage, front garden being laid to lawn with shrub and flower borders, rear garden enclosed behind fencing, laid to lawn, shed.

Ideally situated in a popular residential area of Highcliffe, the property is within easy reach of some of the area's most beautiful beaches, unspoilt coastline, village centre, Highcliffe Castle and Golf Course.



GROUND FLOOR  
1087 sq.ft. (101.0 sq.m.) approx.



TOTAL FLOOR AREA : 1087 sq.ft. (101.0 sq.m.) approx.

Whilst every attempt has been made to ensure the accuracy of the floorplan contained here, measurements of doors, windows, rooms and any other items are approximate and no responsibility is taken for any error, omission or mis-statement. This plan is for illustrative purposes only and should be used as such by any prospective purchaser. The services, systems and appliances shown have not been tested and no guarantee as to their operability or efficiency can be given.  
Made with Metropix ©2021

