



20 Clover Close, Highcliffe, BH23 4TH

PETTENGELLS
ESTATE AGENTS

20 Clover Close, Highcliffe, BH23 4TH

- Popular 'Hoburne Farm' location
- Three bedroom semi-detached house
- Adjoining garage and driveway
- Ground Floor WC
- Lovely mature large garden
- Attractive cul-de-sac location
- South Westerly rear garden
- Walking distance of Sainsbury's Superstore
- Highcliffe School catchment
- Double glazing and GFCH
- Potential for extension (stp)
- Council Tax: Band D
- EPC Rating: Band D



Asking price £395,000

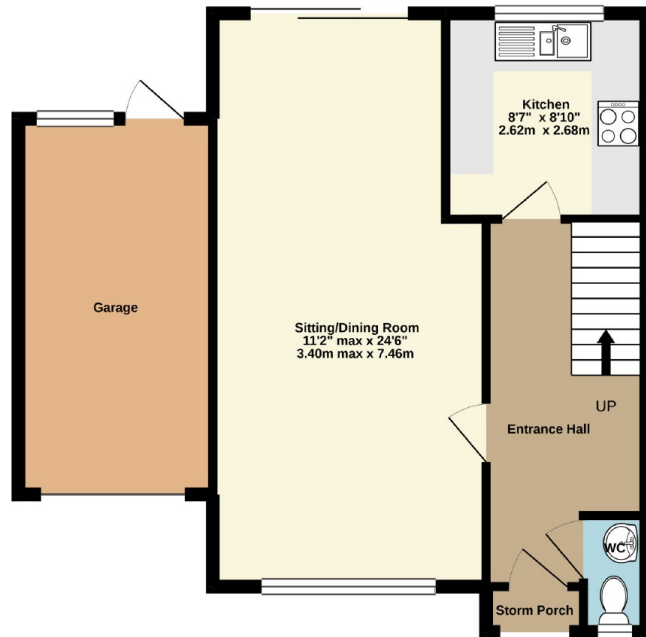


SITED ON A LARGE, MATURE SOUTH WESTERLY GARDEN, this sought after three bedroom semi-detached house on the ever popular Hoburne Farm Development. Located in a small attractive cul-de-sac within walking distance of comprehensive shopping facilities and transport connections and within Highcliffe school catchment.

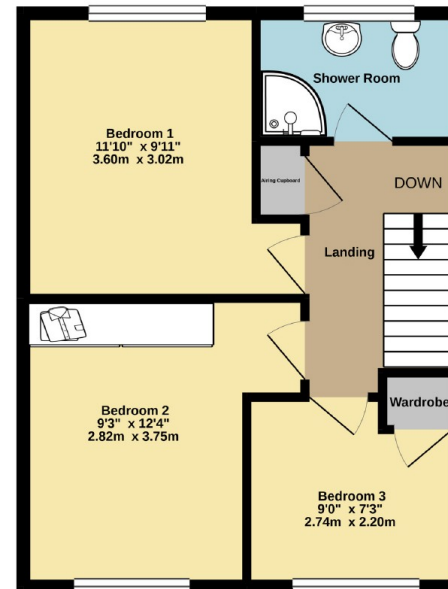
Features of the property include: spacious through lounge/diner, central heating, double glazing, attached garage and driveway and impressive well stocked rear garden.

The property is within easy reach of some of the area's most beautiful beaches and unspoilt coastline with Highcliffe village centre being within walking distance. The nearby towns of Christchurch and New Milton have a wide range of amenities. More extensive facilities can be found further afield at Bournemouth.

GROUND FLOOR
601 sq.ft. (55.8 sq.m.) approx.



1ST FLOOR
454 sq.ft. (42.2 sq.m.) approx.



TOTAL FLOOR AREA : 1055 sq.ft. (98.0 sq.m.) approx.

Whilst every attempt has been made to ensure the accuracy of the floorplan contained here, measurements of doors, windows, rooms and any other items are approximate and no responsibility is taken for any error, omission or mis-statement. This plan is for illustrative purposes only and should be used as such by any prospective purchaser. The services, systems and appliances shown have not been tested and no guarantee as to their operability or efficiency can be given.
Made with Metropix ©2021

