



7 Nea Road, Highcliffe, BH23 4NA

PETTENGELLS
ESTATE AGENTS

7 Nea Road, Highcliffe, BH23 4NA

- Refurbished & extended
- Detached bungalow
- Beautifully presented
- Three double bedrooms
- Established residential area
- Within walking distance of Highcliffe village & Castle
- Many luxury features
- Superbly fitted kitchen/dining room
- Sitting room leading out onto patio
- Master en-suite & further bathroom
- Driveway with ample off-road parking
- Detached garage
- Enclosed rear garden with large patio
- EPC Rating: Band C
- Council Tax: Band F



£735,000

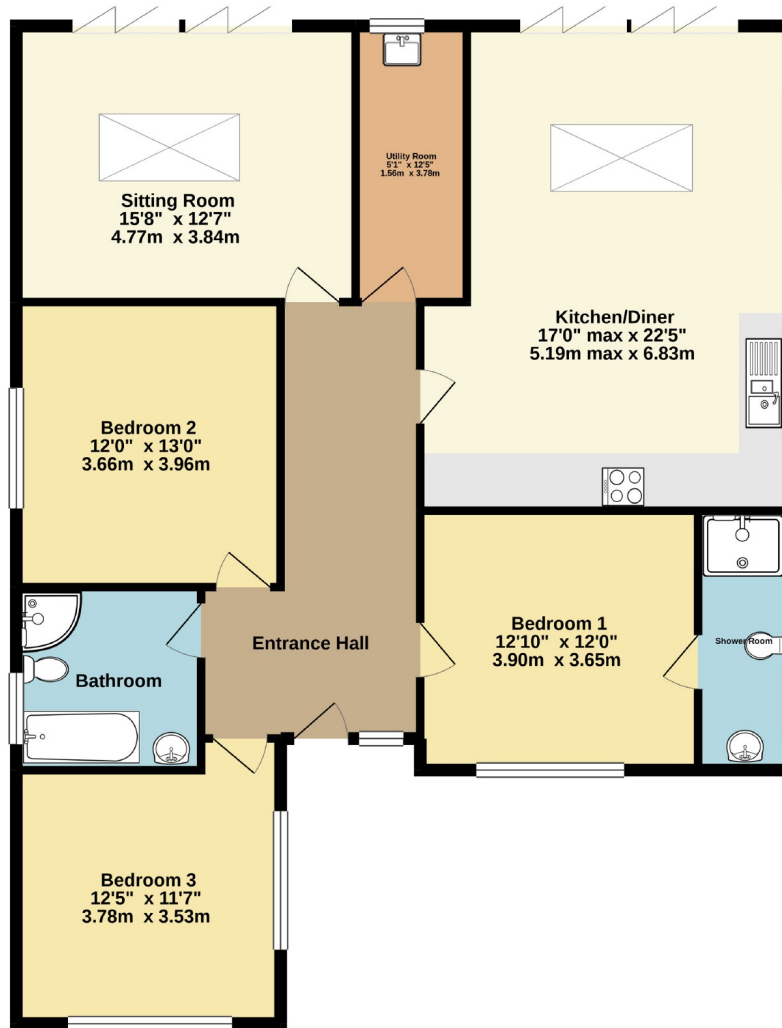


A BEAUTIFULLY PRESENTED DETACHED BUNGALOW which has been refurbished and extended in recent years to provide a bright and spacious, contemporary-style home, located in an established, popular residential area of Highcliffe, within walking distance of Highcliffe village and Castle.

The property has been re-modelled to a high standard, boasting many luxury features including superbly fitted kitchen/dining room with bi-fold doors onto garden, utility, sitting room leading out onto patio, three double bedrooms (master en-suite) and further bathroom.

Externally, there is a driveway with ample off-road parking, detached garage, enclosed rear garden which is laid to lawn with a large paved patio.

GROUND FLOOR



Whilst every attempt has been made to ensure the accuracy of the floorplan contained here, measurements of doors, windows, rooms and any other items are approximate and no responsibility is taken for any error, omission or mis-statement. This plan is for illustrative purposes only and should be used as such by any prospective purchaser. The services, systems and appliances shown have not been tested and no guarantee as to their operability or efficiency can be given.
Made with Metropix ©2021

