



The Thatch, Lyndhurst Road, Highcliffe, BH23 4SG

The Thatch, Lyndhurst Road, Highcliffe, BH23 4SG

- Characterful thatch cottage
- Three bedrooms (one en suite)
- Lounge with feature wood burner
- Kitchen/breakfast room leading onto rear garden
- Ground floor shower room
- Spacious entrance hall
- Separate dining room
- Flexible accommodation with many original features
- Close proximity to New Forest, Christchurch and local beaches
- Generous gardens with outbuildings
- Ample off road parking
- No forward chain
- EPC BAND: D



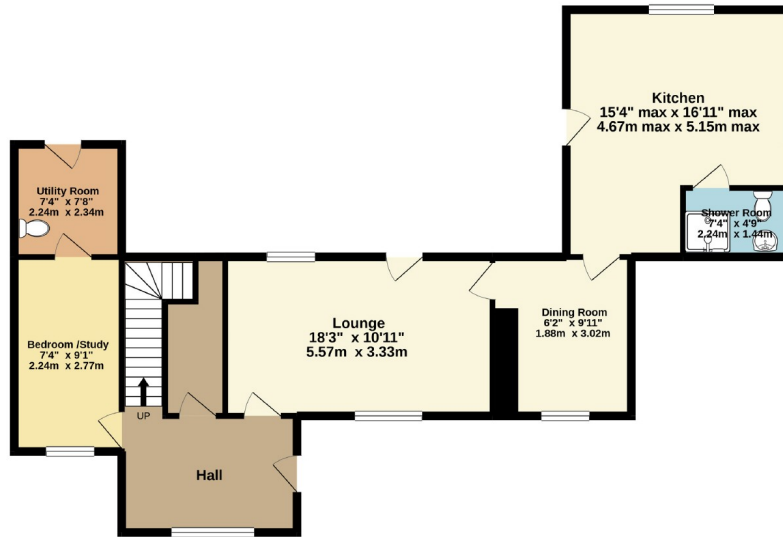
Price guide £475,000



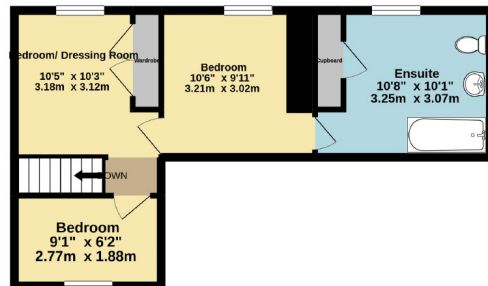
CHARMING DETACHED THREE BEDROOM GRADE II LISTED COTTAGE, situated on the outskirts of Highcliffe, within close proximity to the New Forest, Avon Beach, Mudeford Quay and Christchurch Town Centre where you will find a variety of coffee shops, bakeries, restaurants and shopping facilities. No forward chain.

This delightful home offers flexible accommodation comprising: spacious entrance hall, lounge, separate dining room, kitchen breakfast room, ground floor shower room and utility room, the main bedroom has a vaulted and beamed ceiling with en-suite, Outside, the property has generous gardens and a variety of outbuildings including a summerhouse and large workshop. Ample off road parking for several cars.

GROUND FLOOR



1ST FLOOR



Whilst every attempt has been made to ensure the accuracy of the floorplan contained here, measurements of doors, windows, rooms and any other items are approximate and no responsibility is taken for any error, omission or mis-statement. This plan is for illustrative purposes only and should be used as such by any prospective purchaser. The services, systems and appliances shown have not been tested and no guarantee as to their operability or efficiency can be given.
Made with Metropix ©2021



Measurements are approximate. Nothing in these particulars shall be deemed to be a statement that the property is in good structural condition or otherwise, nor that any services, equipment, facilities or appliances are in good working order or have been tested. Purchasers should satisfy themselves on such matters prior to purchase.