



3 Moonrakers Way, Highcliffe, BH23 4RD

PETTENGELLS
ESTATE AGENTS

3 Moonrakers Way, Highcliffe, BH23 4RD

- Detached chalet property
- Three double bedrooms
- Contemporary GF bathroom & FF shower room
- Re-fitted kitchen/diner open plan onto lounge area
- Refurbished throughout
- Good size utility room
- Raised timber sun deck leading down to the lawned garden
- Detached studio/office/gym
- Garage & in-and-out driveway
- Highcliffe Schools catchment
- Council Tax: Band E
- EPC Rating: Band D



£565,000

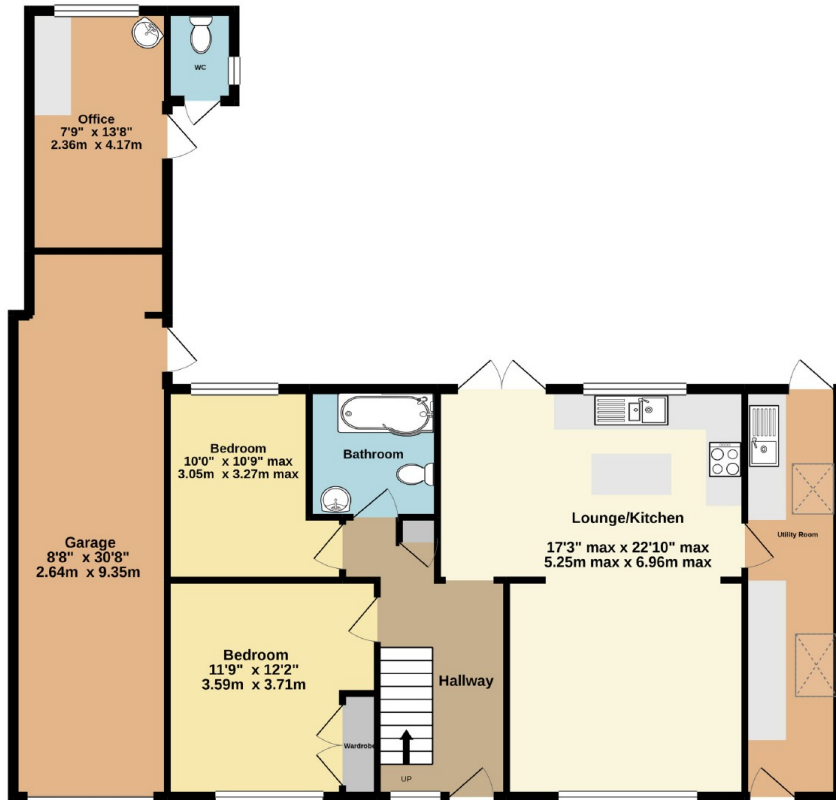


LOCATED OPPOSITE NEA MEADOWS NATURE RESERVE with its picturesque walks, woodland and lake, we are pleased to offer this very well presented detached chalet property.

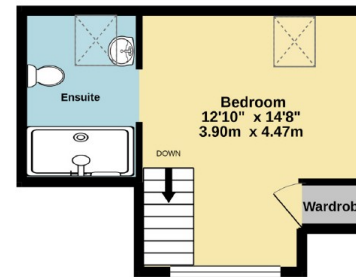
Extensively refurbished with modern fittings and an open plan kitchen/living space leading on to the attractive rear garden. Two ground floor bedrooms, bathroom and separate utility room, a further first floor bedroom and en-suite shower room. Externally, there is a vaulted ceiling garden studio/office, in-and-out driveway with generous off-road parking and a garage.

Ideally situated in a popular residential area of Highcliffe, the property is within easy reach of some of the area's most beautiful beaches, unspoilt coastline, village centre, Highcliffe Castle and Golf Course.

GROUND FLOOR



1ST FLOOR



Whilst every attempt has been made to ensure the accuracy of the floorplan contained here, measurements of doors, windows, rooms and any other items are approximate and no responsibility is taken for any error, omission or mis-statement. This plan is for illustrative purposes only and should be used as such by any prospective purchaser. The services, systems and appliances shown have not been tested and no guarantee as to their operability or efficiency can be given.
Made with Metropix ©2021