



Tarn Close, Ashton-in-Makerfield, Wigan, WN4 8BQ

Offers around £250,000

Sapphire Homes are pleased to be in a position to offer For Sale this immaculately presented and newly refurbished 3 bedroom detached bungalow in a desired location close to local amenities, schools and transport links including the East Lancashire Road and the M6. The accommodation briefly comprises of entrance / hallway leading to a spacious lounge with bi fold doors overlooking landscaped private rear garden, brand new modern fitted luxury kitchen / diner with built in oven, hob and extractor and kitchen appliances, 3 double bedrooms and luxury fitted 4 piece bathroom suite with separate shower and bath. The property is warmed by Gas Central Heating and boasts newly installed Double Glazing throughout along with new electrical wiring, new roof and brand new internal decor / plastering and flooring. Externally there is a driveway leading to a detached garage with off road parking for 2-3 cars and to the rear is a landscaped garden with elevated decking area, new perimeter fencing, large lawn area and borders. Internal viewing is highly recommended to appreciate this wonderful property in full. No Upward Chain.



Sapphire Homes (North) Ltd 80 Market Street, Wigan, WN1 1HX
T 01942 494944 F 01942 493301 E info@sapphirehomes.co.uk W www.sapphirehomes.co.uk

Specialists in Sales, Lettings & Property Investments

Tarn Close, Ashton-in-Makerfield, Wigan, WN4 8BQ

GROUND FLOOR

Entrance / Hallway

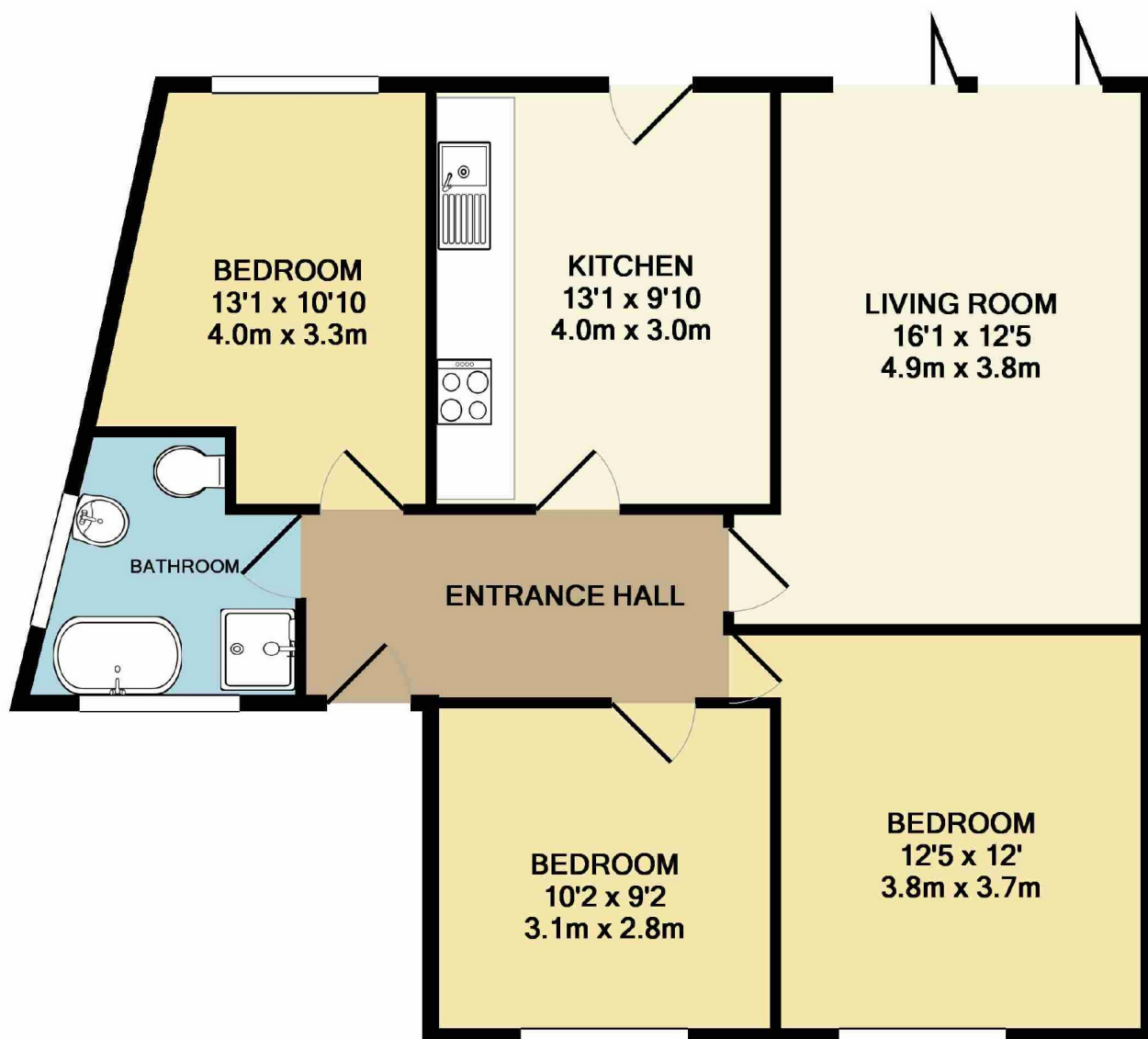
Lounge



You may download, store and use the material for your own personal use and research. You may not republish, retransmit, redistribute or otherwise make the material available to any party or make the same available on any website, online service or bulletin board of your own or of any other party or make the same available in hard copy or in any other media without the website owner's express prior written consent. The website owner's copyright must remain on all reproductions of material taken from this website.

Sapphire Homes (North) Ltd 80 Market Street, Wigan, WN1 1HX
T 01942 494944 F 01942 493301 E info@sapphirehomes.co.uk W www.sapphirehomes.co.uk

Specialists in Sales, Lettings & Property Investments



TOTAL APPROX. FLOOR AREA 777 SQ.FT. (72.2 SQ.M.)
Measurements are approximate. Not to scale. Illustrative purposes only
Made with Metropix ©2017

