



Lathom House, Lathom Park, Ormskirk, L40 5UP

Price £250,000

Sapphire Homes are delighted to offer For Sale this 2 bedroom luxury ground floor apartment that forms part of the historic Lathom Hall Estate which has been lovingly restored and is without doubt one of the most impressive locations in West Lancashire. Lathom Hall dates back to 1790 and The Charlotte is positioned to the rear of the hall and boasts stunning views.

Lathom Park is located on an elevated plain in the heart of rural West Lancashire provides the perfect retreat from the hustle and bustle of daily life and is in an area that is well known for its luxury country homes as well as for its peaceful rural setting yet Ormskirk's busy and vibrant town centre is within easy reach and the railway station and M58 motorway are just a short drive ensuring the property is well placed within striking distance of Manchester, Liverpool and other cities and towns.

The Charlotte in brief comprises of an entrance / vestibule area before rising into a large open plan lounge / dining area with feature fireplace, luxury fitted kitchen with integrated appliances, 2 good sized bedrooms with the master benefitting from a stunning ensuite and a family bathroom with luxury three piece suite in white with shower over bath.

There are luxurious fixtures and fittings, modern decor yet retains lots of charm and character throughout including, bespoke sash windows, high ceilings and that exclusive feel throughout.

Externally the property rests in a beautiful position on the estate, with immaculately maintained lawn areas and well-kept borders and to the side elevation as well as a private patio area and courtyard to the rear which is a great focal point for social gatherings. Whilst the garden areas are communal it is understood that all residents are respectful of one another's privacy and the discreet side patio is exclusively used by the resident of The Charlotte we are informed.

In addition, there is ample parking along with access to a single garage offering excellent storage and early internal viewings are highly recommended to appreciate this stunning property.



Sapphire Homes (North) Ltd 80 Market Street, Wigan, WN1 1HX
T 01942 494944 **F** 01942 493301 **E** info@sapphirehomes.co.uk **W** www.sapphirehomes.co.uk

Specialists in sales, Lettings & Property Investments

Lathom House, Lathom Park, Ormskirk, L40 5UP

GROUND FLOOR

Entrance / Hallway

Lounge / Dining Area

Kitchen

Bedroom 1

Ensuite

Bedroom 2

Bathroom

EXTERNAL

Single Garage

Communal Gardens

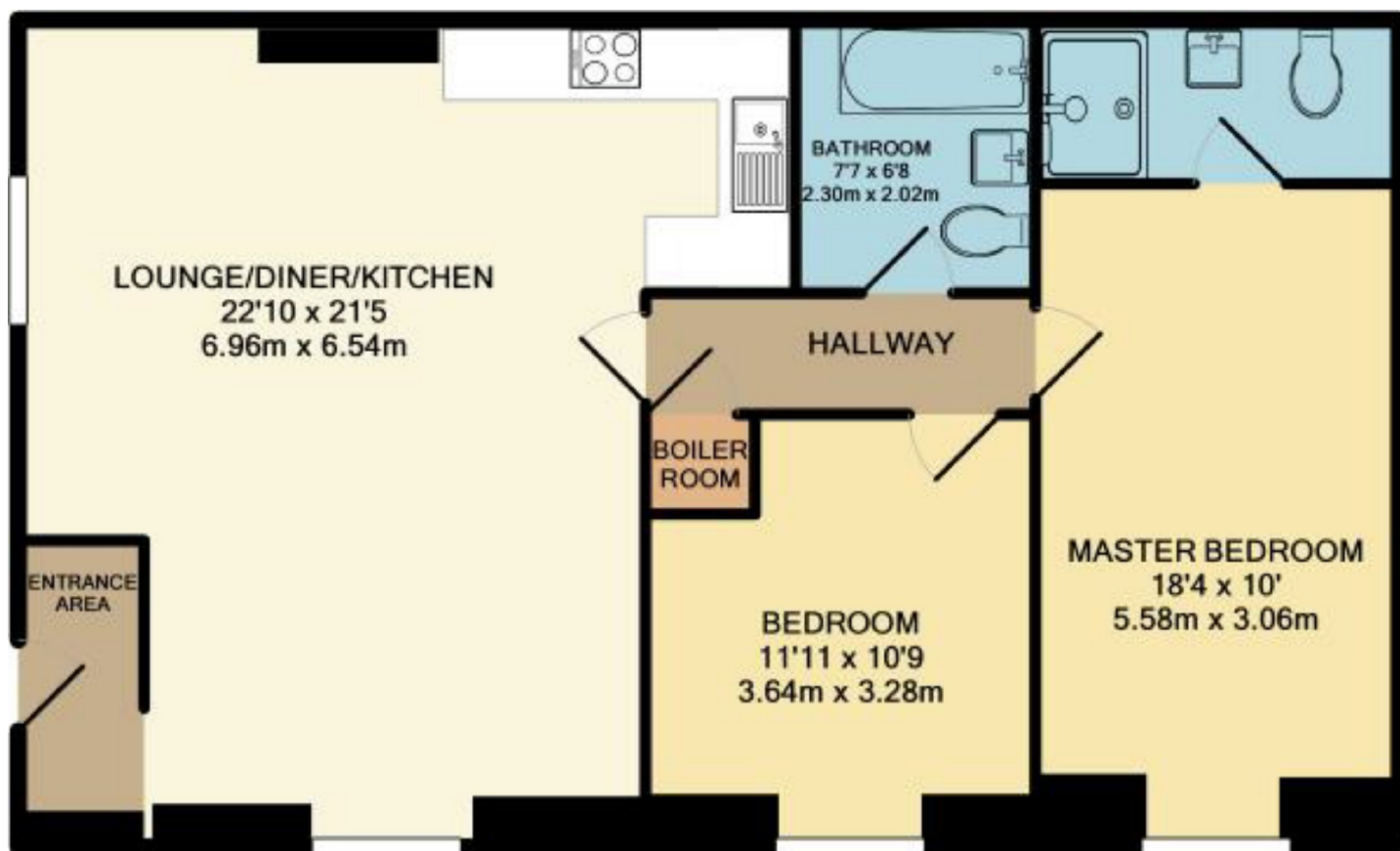
Views



You may download, store and use the material for your own personal use and research. You may not republish, retransmit, redistribute or otherwise make the material available to any party or make the same available on any website, online service or bulletin board of your own or of any other party or make the same available in hard copy or in any other media without the website owner's express prior written consent. The website owner's copyright must remain on all reproductions of material taken from this website.

Sapphire Homes (North) Ltd 80 Market Street, Wigan, WNI 1HX
T 01942 494944 F 01942 493301 E info@sapphirehomes.co.uk W www.sapphirehomes.co.uk

Specialists in Sales, Lettings & Property Investments



TOTAL APPROX. FLOOR AREA 828 SQ.FT. (76.9 SQ.M.)

Whilst every attempt has been made to ensure the accuracy of the floor plan contained here, measurements of doors, windows, rooms and any other items are approximate and no responsibility is taken for any error, omission, or mis-statement. This plan is for illustrative purposes only and should be used as such by any prospective purchaser. The services, systems and appliances shown have not been tested and no guarantee as to their operability or efficiency can be given.

Made with Metropix ©2017