



## Lathom House, Lathom Park, Ormskirk, L40 5UP

**Price £365,000**

Sapphire Homes are delighted to offer For Sale this 3 bedroom luxury duplex penthouse apartment that forms part of the historic Lathom Hall Estate which has been lovingly restored and is without doubt one of the most impressive locations in West Lancashire. Lathom Hall dates back to 1790. "The Seacombe" is a duplex penthouse apartment and is positioned to the rear of the hall and boasts stunning contemporary living.

Lathom Park is located on an elevated plain in the heart of rural West Lancashire provides the perfect retreat from the hustle and bustle of daily life and is in an area that is well known for its luxury country homes as well as for its peaceful rural setting yet Ormskirk's busy and vibrant town centre is within easy reach and the railway station and M58 motorway are just a short drive ensuring the property is well placed within striking distance of Manchester, Liverpool and other cities and towns.

The property can be accessed via stairs or elevator and in brief comprises of an entrance / hallway which leads into a stunning and large open plan lounge / dining area with luxury fitted kitchen with integrated appliances, 3 large double bedrooms with two benefiting from luxury ensuite bathrooms, utility area, W.C. and a family bathroom with luxury three piece suite in white with shower over bath.

The apartment boasts luxurious fixtures and fittings, modern decor yet retains lots of charm and character throughout including, bespoke sash windows, high ceilings and that exclusive feel throughout.

Externally the property rests in a beautiful position on the estate, with immaculately maintained lawn areas and well-kept borders and to the side elevation as well as a private patio area and courtyard to the rear which is a great focal point for social gatherings.

In addition, there is ample parking along with access to a single garage offering excellent storage and early internal viewings are highly recommended to appreciate this stunning property.



**Sapphire Homes (North) Ltd** 80 Market Street, Wigan, WNI 1HX  
**T** 01942 494944 **F** 01942 493301 **E** [info@sapphirehomes.co.uk](mailto:info@sapphirehomes.co.uk) **W** [www.sapphirehomes.co.uk](http://www.sapphirehomes.co.uk)

*specialists in sales, Lettings & Property Investments*

# Lathom House, Lathom Park, Ormskirk, L40 5UP

## FIRST FLOOR

Entrance / Hallway

Lounge / Dining / Kitchen

Bedroom 3

Bathroom

Utility Room / W.C.

## FIRST FLOOR

Landing

Bedroom 1

Ensuite

Walk in Robe Area

Bedroom 2

Ensuite

## EXTERNAL

Single Garage

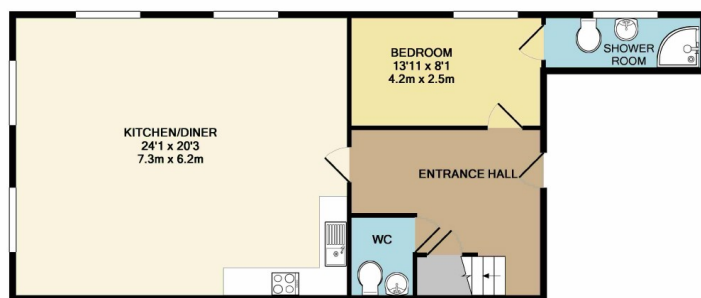
Views



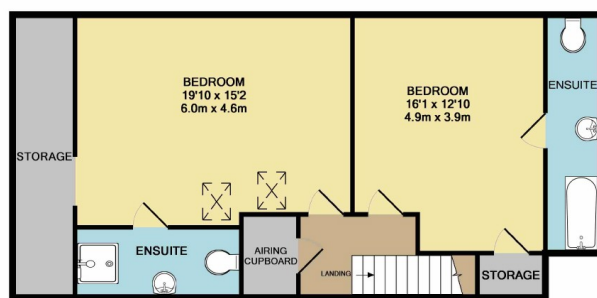
You may download, store and use the material for your own personal use and research. You may not republish, retransmit, redistribute or otherwise make the material available to any party or make the same available on any website, online service or bulletin board of your own or of any other party or make the same available in hard copy or in any other media without the website owner's express prior written consent. The website owner's copyright must remain on all reproductions of material taken from this website.

**Sapphire Homes (North) Ltd** 80 Market Street, Wigan, WNI 1HX  
T 01942 494944 F 01942 493301 E [info@sapphirehomes.co.uk](mailto:info@sapphirehomes.co.uk) W [www.sapphirehomes.co.uk](http://www.sapphirehomes.co.uk)

*Specialists in Sales, Lettings & Property Investments*



GROUND FLOOR  
APPROX. FLOOR  
AREA 813 SQ.FT.  
(75.6 SQ.M.)



1ST FLOOR  
APPROX. FLOOR  
AREA 836 SQ.FT.  
(77.7 SQ.M.)  
TOTAL APPROX. FLOOR AREA 1649 SQ.FT. (153.2 SQ.M.)  
Measurements are approximate. Not to scale. Illustrative purposes only.  
Made with Metropix ©2018