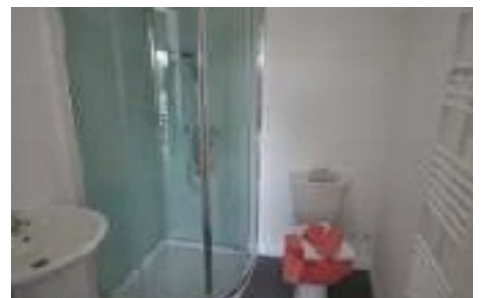
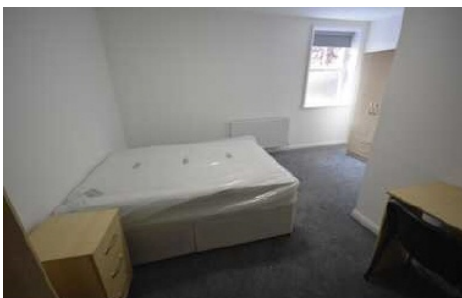




**King Street, Leigh, WN7 4LJ**

**£325 PCM**

**\*\*\*ENSUITE BEDROOM\*\*\* \*\*BILLS INCLUDED\*\*** Room in Large Prominent Town Centre Building Conversion. Bedroom 4 is a generous double bedroom on the ground floor with its own private ensuite shower room. The Building is Split into 3 Floors. GROUND FLOOR has 4 ensuite bedrooms, FIRST FLOOR Has 4 ensuite bedrooms and SECOND FLOOR has 4 ensuite bedrooms. They are all Fully Furnished to High Standard. Each Bedroom benefits from ensuite bedroom with three piece shower suite in white. Queen size bedroom Each Floor also benefits from a generous and fully equipped communal Kitchen / Diner / Living Areas - all completed to high specification. Viewings are a must to appreciate in full. TV Aerial points in each room, Internet included, ALL BILLS Included. A few minute walk to Leigh Town Centre. Neutral decor throughout. Finished to a high specification. Close to all town centre amenities including shops, pubs, restaurants, retail outlets, transport links and early viewing is recommended to avoid disappointment. No Pets. No Smokers. No DSS.



**Sapphire Homes (North) Ltd** 80 Market Street, Wigan, WN1 1HX  
**T** 01942 494944 **F** 01942 493301 **E** [info@sapphirehomes.co.uk](mailto:info@sapphirehomes.co.uk) **W** [www.sapphirehomes.co.uk](http://www.sapphirehomes.co.uk)

*Specialists in sales, Lettings & Property Investments*

# King Street, Leigh, WN7 4LJ

## GROUND FLOOR

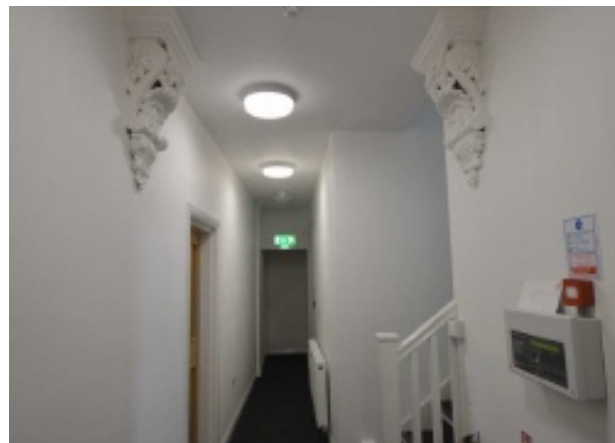
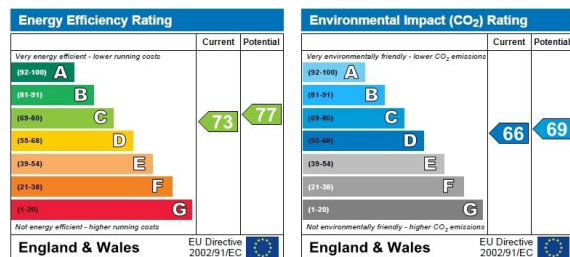
Entrance / Hallway

Room 4

Ensuite

Communal Kitchen / Diner / Living

EXTERNAL



You may download, store and use the material for your own personal use and research. You may not republish, retransmit, redistribute or otherwise make the material available to any party or make the same available on any website, online service or bulletin board of your own or of any other party or make the same available in hard copy or in any other media without the website owner's express prior written consent. The website owner's copyright must remain on all reproductions of material taken from this website.