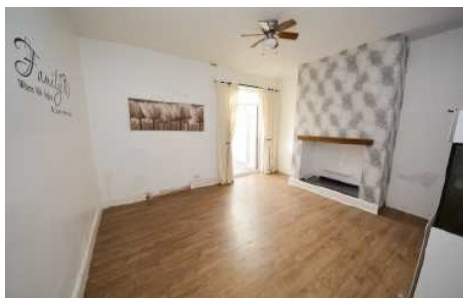




Liverpool Road, Hindley, Wigan, WN2 3HQ

Price £89,950

Sapphire Homes are delighted to offer For Sale this large 2 bedroom mid terraced house situated in a popular residential area in Hindley that is close to local amenities, excellent local schools and transport links including the M61 and Hindley Train Station. The property has well planned accommodation that briefly comprises: entrance / hallway, lounge / reception 2 to the front elevation and to the rear is a large reception room leading into a generous fitted kitchen / dining room with French doors leading to the rear garden. To the first floor the landing provides access to two good sized double bedrooms and family bathroom with modern three piece suite in white with shower over bath. Externally there is a low maintenance front and rear gardens with the rear garden having lots of potential. The property is warmed by Gas Central Heating and also boasts UPVC double glazing and a modern decor throughout. Early internal viewings are highly recommended to appreciate in full.



Sapphire Homes (North) Ltd 80 Market Street, Wigan, WN1 1HX
T 01942 494944 **F** 01942 493301 **E** info@sapphirehomes.co.uk **W** www.sapphirehomes.co.uk

Specialists in Sales, Lettings & Property Investments

Liverpool Road, Hindley, Wigan, WN2 3HQ

GROUND FLOOR

Entrance / Hallway

Lounge 4.09m x 3.05m (13'5" x 10'0")

Reception 2 4.32m x 4.42m (14'2" x 14'6")

Kitchen / Diner 3.99m x 2.67m (13'1" x 8'9")

FIRST FLOOR

Landing

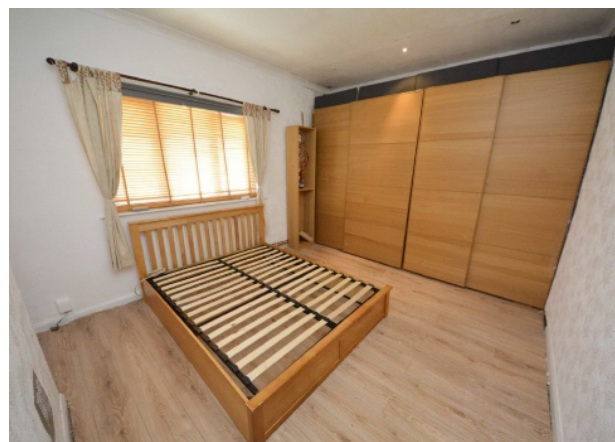
Bedroom 1 3.99m x 3.53m (13'1" x 11'7")

Bedroom 2 4.09m x 3.23m (13'5" x 10'7")

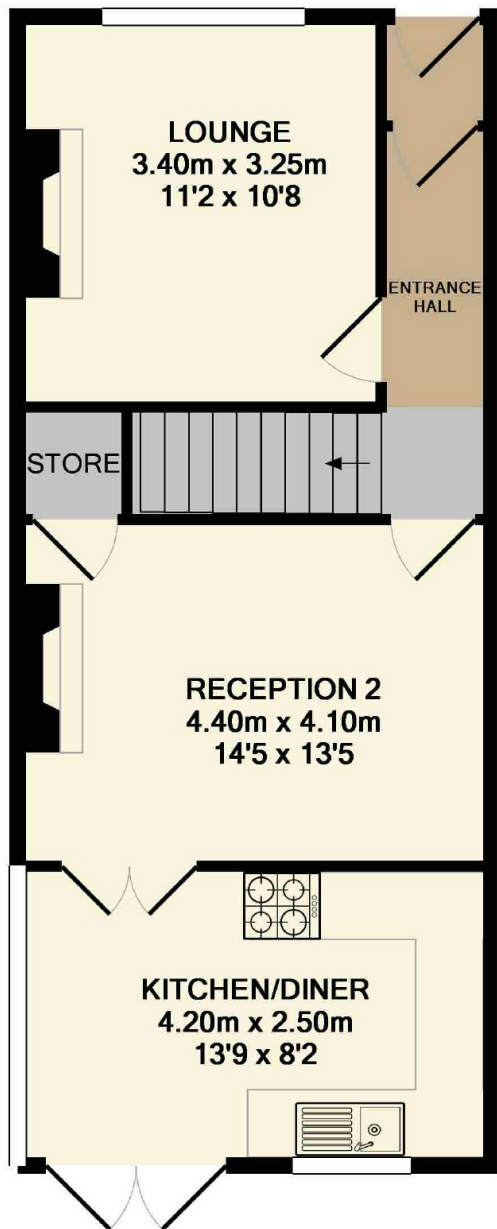
Bathroom

EXTERNAL

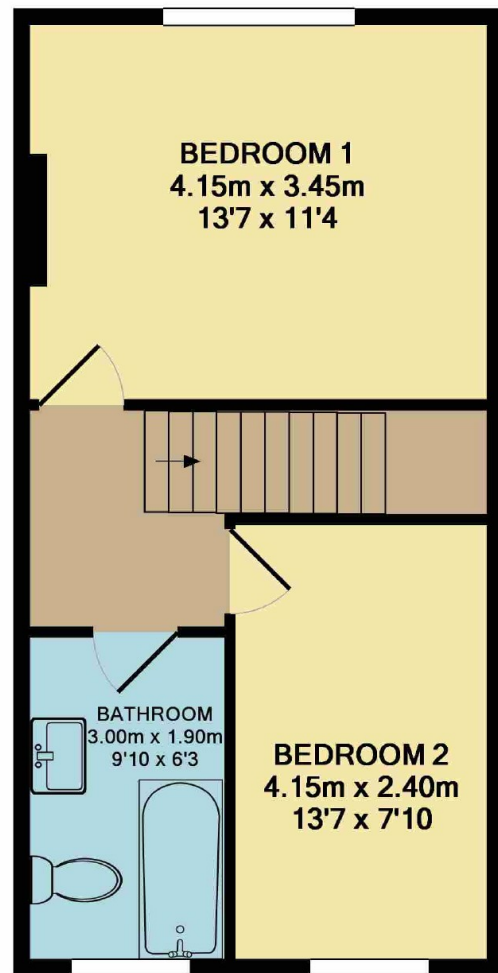
Rear Garden



You may download, store and use the material for your own personal use and research. You may not republish, retransmit, redistribute or otherwise make the material available to any party or make the same available on any website, online service or bulletin board of your own or of any other party or make the same available in hard copy or in any other media without the website owner's express prior written consent. The website owner's copyright must remain on all reproductions of material taken from this website.



GROUND FLOOR



1ST FLOOR

Whilst every attempt has been made to ensure the accuracy of the floor plan contained here, measurements of doors, windows, rooms and any other items are approximate and no responsibility is taken for any error, omission, or mis-statement. This plan is for illustrative purposes only and should be used as such by any prospective purchaser. The services, systems and appliances shown have not been tested and no guarantee as to their operability or efficiency can be given
Made with Metropix ©2019

