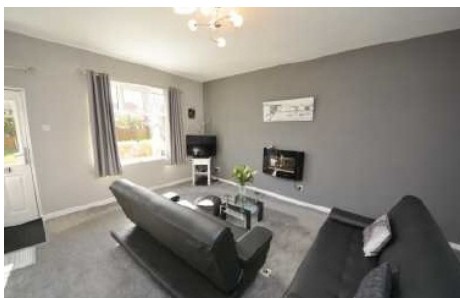
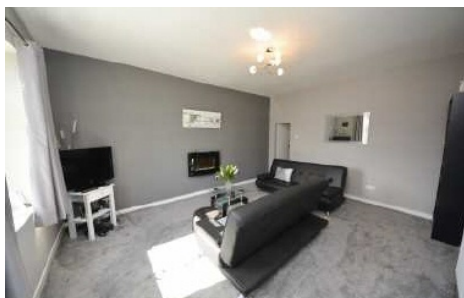




Ratcliffe Road, Aspull, Wigan, WN2 1YE

O.I.R.O £149,950

Sapphire Homes are delighted to offer For Sale this impressive 2 bedroom end terraced property offering exceptional living space and is wonderfully presented throughout. Positioned along Ratcliffe Road in Aspull & boasting beautiful well appointed living this property would be perfect for couple, professional or small family. The property is close to excellent local schools, local amenities as well as commuter links including the M61. The accommodation briefly comprises of a large lounge, dining room / reception 2 and beyond is a beautiful kitchen / diner with integrated appliances to the rear elevation which also affords access to the rear garden. To the first floor is two double bedrooms with the master bedroom having a large walk in dresser and a bathroom with modern 3 piece suite in white with shower over bath. The property also has a large cellar space which makes wonderful storage but could be utilised in a variety of ways subject to completion of works. The property is warmed by Gas Central Heating with a recently installed boiler and also benefits from a tasteful decor and double glazing throughout. Externally there are low maintenance gardens to the front and rear with the rear adjoining an open space so has a private outlook. Early internal viewing is a must to appreciate in full.



Sapphire Homes (North) Ltd 80 Market Street, Wigan, WN1 1HX
T 01942 494944 **F** 01942 493301 **E** info@sapphirehomes.co.uk **W** www.sapphirehomes.co.uk

Specialists in Sales, Lettings & Property Investments

Ratcliffe Road, Aspull, Wigan, WN2 1YE

GROUND FLOOR

Porch

Lounge

Dining Area

Kitchen / Diner

FIRST FLOOR

Landing

Bedroom 1

Bedroom 2

Bathroom

EXTERNAL

Rear Garden

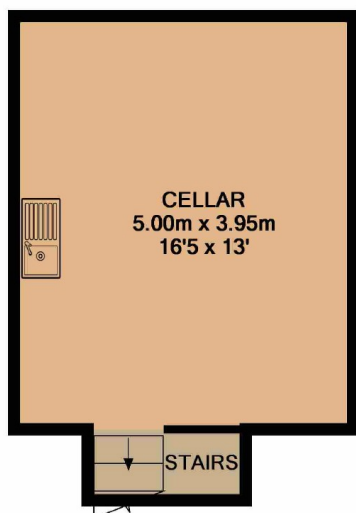
Cellar



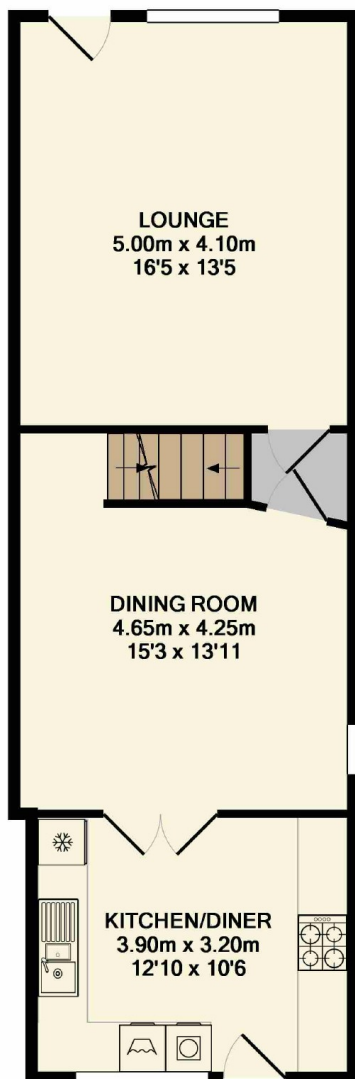
You may download, store and use the material for your own personal use and research. You may not republish, retransmit, redistribute or otherwise make the material available to any party or make the same available on any website, online service or bulletin board of your own or of any other party or make the same available in hard copy or in any other media without the website owner's express prior written consent. The website owner's copyright must remain on all reproductions of material taken from this website.

Sapphire Homes (North) Ltd 80 Market Street, Wigan, WN1 1HX
T 01942 494944 F 01942 493301 E info@sapphirehomes.co.uk W www.sapphirehomes.co.uk

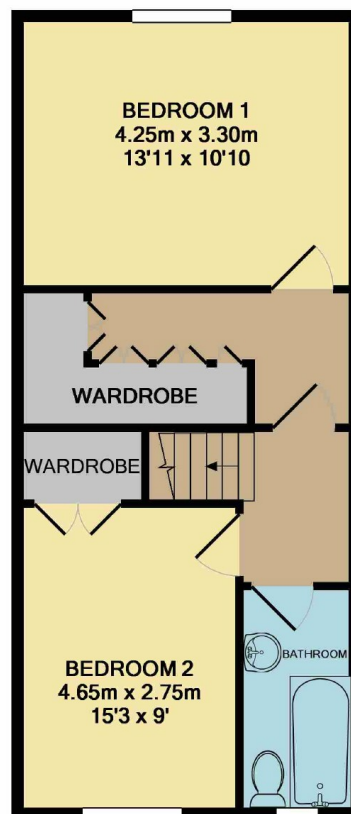
Specialists in Sales, Lettings & Property Investments



CELLAR



GROUND FLOOR



1ST FLOOR

Whilst every attempt has been made to ensure the accuracy of the floor plan contained here, measurements of doors, windows, rooms and any other items are approximate and no responsibility is taken for any error, omission, or mis-statement. This plan is for illustrative purposes only and should be used as such by any prospective purchaser. The services, systems and appliances shown have not been tested and no guarantee as to their operability or efficiency can be given
Made with Metropix ©2019

