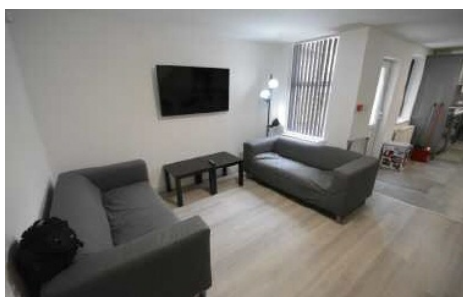




**Cotswold Street, Liverpool, L7 2PY**

**£85 Per week**

**\*\*\*6 DOUBLE BEDROOMS AVAILABLE\*\*\* \*\*£85.00 Per Week / Per Room\*\*\* \*\*ALL BILLS INCLUDED\*\*\* \*\*STUDENT ACCOMMODATION\*\*\*** Sapphire Homes are delighted to offer TO LET this modern six bedroom house to rent. Cotswold Street is a great property in the popular student area of Kensington providing many benefits living in this property. It briefly comprises entrance / hallway, W.C., impressive living / dining / kitchen area, 6 double bedrooms - all with furniture and fitted TV's and 2 bathroom with 3 piece shower suites in white. The property comes full furnished with all bills included. The property is located within walking distance to University Campus and City Centre, amenities such as shops, cafes, supermarkets, pubs and leisure centre, providing good links to and from the city centre. The property is warmed by Gas Central Heating and also benefits from Double Glazing throughout and a modern / tasteful decor. Internal Viewing is a Must.



**Sapphire Homes (North) Ltd** 80 Market Street, Wigan, WNI 1HX  
**T** 01942 494944 **F** 01942 493301 **E** [info@sapphirehomes.co.uk](mailto:info@sapphirehomes.co.uk) **W** [www.sapphirehomes.co.uk](http://www.sapphirehomes.co.uk)

*Specialists in Sales, Lettings & Property Investments*

# Cotswold Street, Liverpool, L7 2PY

## GROUND FLOOR

Entrance / Hallway

Bedroom 1

W.C.

Communal Living / Dining / Kitchen

## FIRST FLOOR

Landing

Bedroom 2

Bedroom 3

Bedroom 4

Bathroom

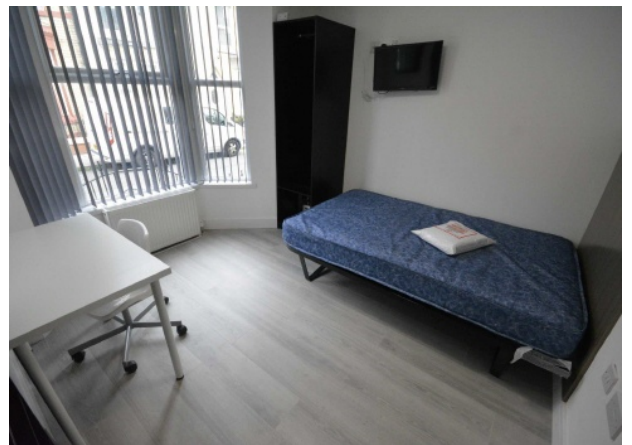
## SECOND FLOOR

Landing

Bedroom 5

Bedroom 6

Bathroom 2



Energy Efficiency Rating		Current	Potential
Very energy efficient - lower running costs			
(92-100)	A		85
(81-91)	B		
(69-80)	C	72	
(55-68)	D		
(39-54)	E		
(21-38)	F		
(1-20)	G		
Not energy efficient - higher running costs			
England & Wales		EU Directive 2002/91/EC	EU Directive 2002/91/EC

Environmental Impact (CO <sub>2</sub> ) Rating		Current	Potential
Very environmentally friendly - lower CO <sub>2</sub> emissions			
(12-100)	A		82
(81-91)	B		
(69-80)	C	68	
(55-68)	D		
(39-54)	E		
(21-38)	F		
(1-20)	G		
Not environmentally friendly - higher CO <sub>2</sub> emissions			
England & Wales		EU Directive 2002/91/EC	EU Directive 2002/91/EC

You may download, store and use the material for your own personal use and research. You may not republish, retransmit, redistribute or otherwise make the material available to any party or make the same available on any website, online service or bulletin board of your own or of any other party or make the same available in hard copy or in any other media without the website owner's express prior written consent. The website owner's copyright must remain on all reproductions of material taken from this website.