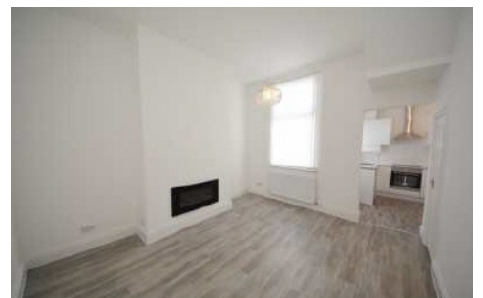
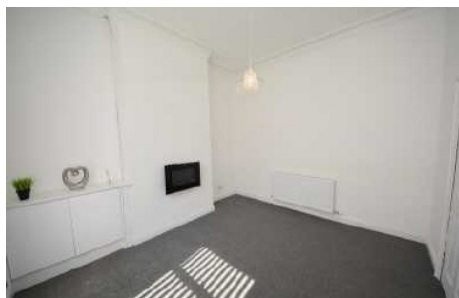
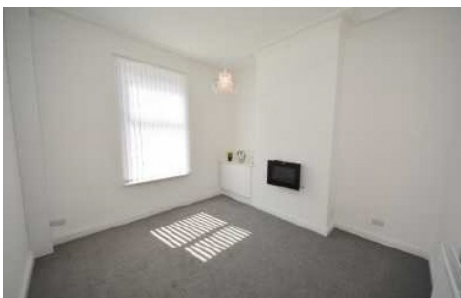




Scarisbrick Street, Swinley, Wigan, WN1 2BS

Offers over £125,000

It is with great pleasure that Sapphire Homes are in a position to offer For Sale this newly refurbished and immaculately presented 2 bedroom mid terrace property in a hugely popular residential location that is close to Wigan town centre, local amenities and all transport links. The property has a large entrance / hallway leading to the lounge, separate dining room and to the rear there is a stunning fully fitted kitchen with access to the rear garden. To the first floor there are 2 generous double bedrooms and bathroom with brand new luxury 4 piece suite in white with separate shower and bath. The property is warmed by Gas Central Heating and boasts UPVC Double Glazing and a modern neutral throughout. Early internal viewings are highly recommended to appreciate this wonderful property which is perfect for 1st time buyer, professional, couple or buy to let investor. Offered to market with No Upward Chain.



Sapphire Homes (North) Ltd 80 Market Street, Wigan, WN1 1HX
T 01942 494944 F 01942 493301 E info@sapphirehomes.co.uk W www.sapphirehomes.co.uk

Specialists in Sales, Lettings & Property Investments

Scarisbrick Street, Swinley, Wigan, WN1 2BS

GROUND FLOOR

Entrance / Hallway

Lounge

Dining Room / Reception 2

Kitchen



You may download, store and use the material for your own personal use and research. You may not republish, retransmit, redistribute or otherwise make the material available to any party or make the same available on any website, online service or bulletin board of your own or of any other party or make the same available in hard copy or in any other media without the website owner's express prior written consent. The website owner's copyright must remain on all reproductions of material taken from this website.

Sapphire Homes (North) Ltd 80 Market Street, Wigan, WN1 1HX
T 01942 494944 F 01942 493301 E info@sapphirehomes.co.uk W www.sapphirehomes.co.uk

Specialists in Sales, Lettings & Property Investments

