



Woodville Road, Springview, Wigan, WN3 4PB

Offers over £112,000

Sapphire Homes are delighted to offer For Sale this well presented 2 bedroom semi detached home within a popular cul de sac location and a short walk from local schools, amenities and transport links. The accommodation briefly comprises of porch leading to a generous lounge, modern fitted dining / kitchen and to the rear elevation is a recently built conservatory which has French doors leading out to the rear garden. To the first floor there are two good sized bedrooms (1 double and 1 single) which both benefit from modern fitted robes and a family bathroom with modern three piece shower suite in white. The property is warmed by Gas Central Heating and boasts UPVC double glazing and neutral decor throughout. Externally there is a low maintenance garden to the rear and off road road parking to the front / side of the property. Early internal viewings are essential to appreciate this lovely property which would be perfect for 1st time buyer, professional or couple. Offered to market with No Upward Chain.



Sapphire Homes (North) Ltd 80 Market Street, Wigan, WN1 1HX
T 01942 494944 F 01942 493301 E info@sapphirehomes.co.uk W www.sapphirehomes.co.uk

Specialists in Sales, Lettings & Property Investments

Woodville Road, Springview, Wigan, WN3 4PB

GROUND FLOOR

Porch

Lounge

Kitchen / Diner

Conservatory

FIRST FLOOR

Landing

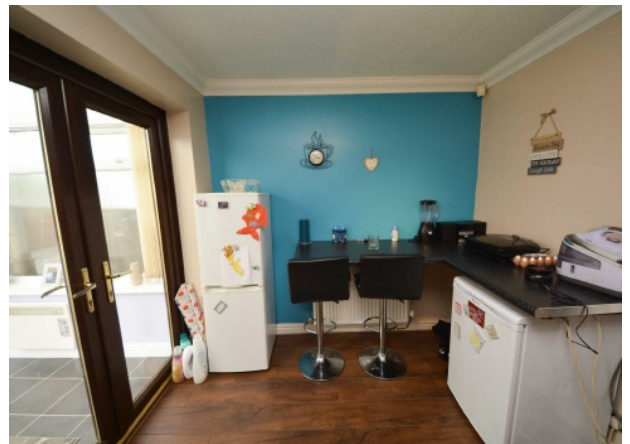
Master Bedroom

Bedroom 2

Bathroom

EXTERNAL

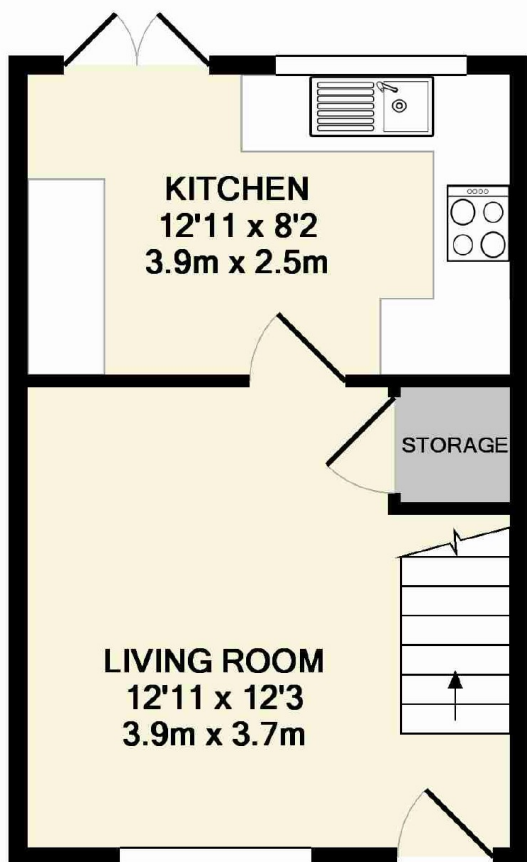
Rear Garden



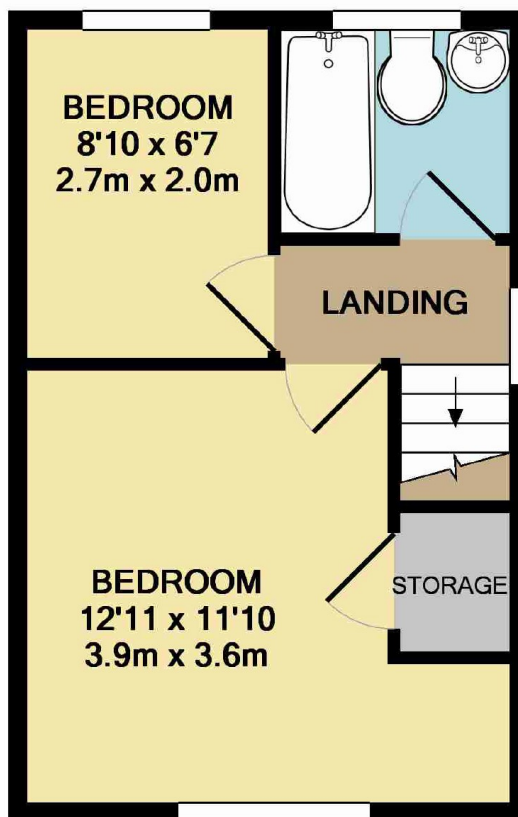
You may download, store and use the material for your own personal use and research. You may not republish, retransmit, redistribute or otherwise make the material available to any party or make the same available on any website, online service or bulletin board of your own or of any other party or make the same available in hard copy or in any other media without the website owner's express prior written consent. The website owner's copyright must remain on all reproductions of material taken from this website.

Sapphire Homes (North) Ltd 80 Market Street, Wigan, WN1 1HX
T 01942 494944 F 01942 493301 E info@sapphirehomes.co.uk W www.sapphirehomes.co.uk

Specialists in Sales, Lettings & Property Investments



GROUND FLOOR
APPROX. FLOOR
AREA 263 SQ.FT.
(24.4 SQ.M.)



1ST FLOOR
APPROX. FLOOR
AREA 263 SQ.FT.
(24.4 SQ.M.)

TOTAL APPROX. FLOOR AREA 525 SQ.FT. (48.8 SQ.M.)
Measurements are approximate. Not to scale. Illustrative purposes only
Made with Metropix ©2016

