

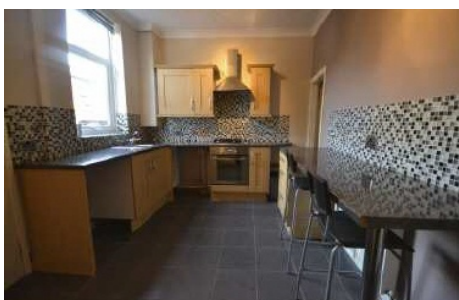


**Sydney Street, Platt Bridge, Wigan, WN2 5BP**

**£430 PCM**

Sapphire Homes are delighted to be in a position to offer TO LET this wonderfully presented 3 bedroom mid terraced property in popular residential location situated close to local schools, amenities and transport links.

The accommodation briefly comprises of entrance / vestibule leading to generous lounge, modern fitted kitchen / diner and modern 3 piece bathroom suite with shower over bath. To the first floor there are two good sized bedrooms and smaller single bedroom. Externally the property is pavement fronted with a yard / patio garden to the rear. The property is warmed by gas central heating and benefits from double glazing throughout. Internal viewing is highly recommended to appreciate in full. No Pets. No Smokers.



**Sapphire Homes (North) Ltd** 80 Market Street, Wigan, WN1 1HX  
T 01942 494944 F 01942 493301 E [info@sapphirehomes.co.uk](mailto:info@sapphirehomes.co.uk) W [www.sapphirehomes.co.uk](http://www.sapphirehomes.co.uk)

*Specialists in Sales, Lettings & Property Investments*

# Sydney Street, Platt Bridge, Wigan, WN2 5BP

## GROUND FLOOR

Entrance / Hallway

Lounge

Kitchen / Diner

Bathroom

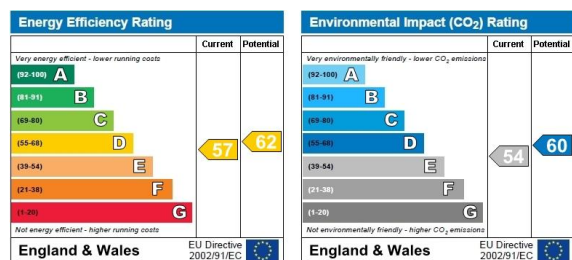
## FIRST FLOOR

Master Bedroom

Bedroom 2

Bedroom 3

## EXTERNAL



You may download, store and use the material for your own personal use and research. You may not republish, retransmit, redistribute or otherwise make the material available to any party or make the same available on any website, online service or bulletin board of your own or of any other party or make the same available in hard copy or in any other media without the website owner's express prior written consent. The website owner's copyright must remain on all reproductions of material taken from this website.