



COMMERCIAL

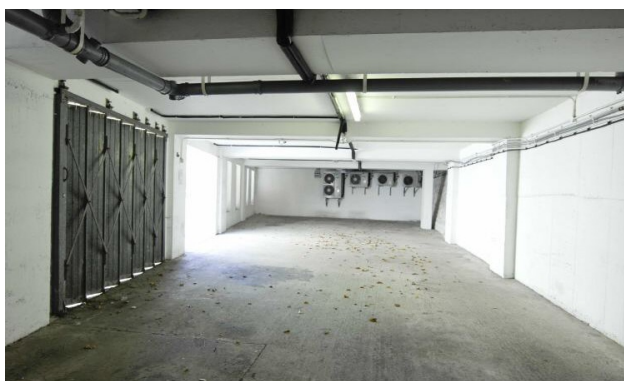
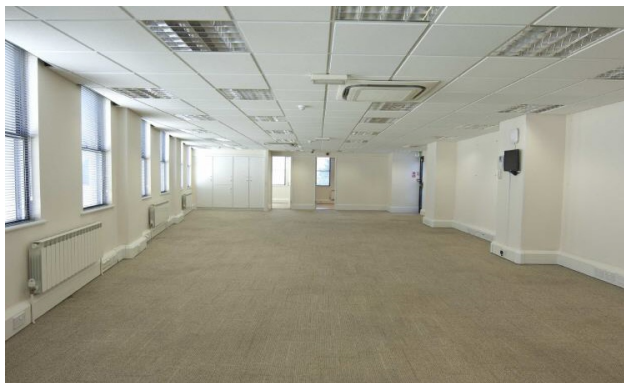
lovellsproperty.com | Telephone 723630

Est 1879

LOVELLS



Sole
Agent



£92,650 Per annum

St Peter Port

Filton House
North Clifton

Approx. 2,630 square feet

Close to Law Courts

Part open plan / Part cellular offices

Air conditioning

8 on-site parking spaces

New lease available



Filton House, North Clifton, St Peter Port

A modern and well presented office suite set over two floors spanning approximately 2,630 sq ft.

The ground floor comprises a meeting room, open plan office accommodation, a safe room, kitchen and WC facilities.

The first floor is open plan with a separate office, kitchen, further WC facilities and a shower cubicle. The suite is fitted with air conditioning throughout and benefits from suspended ceilings.

The suite is conveniently located near the centre of St. Peter Port with on-site garage parking for 8 cars.

Available immediately. Further information from Chris Lovell BSc. Est. Man. M.R.I.C.S.



Further Information

If you would like any further information or wish to view the property please contact us on 01481 723630

Opening hours

Monday to Friday - 8.45am to 5.00pm

Saturday - 9.30am to 1.00pm

Viewings out of hours by prior arrangement

Disclaimer

Lovell and Partners Ltd for themselves and for the vendors or lessors of this property whose agents they are give notice that these particulars are for guidance only, and do not form part of any offer or contract, nor can their accuracy be relied upon by third parties who should verify all information for themselves through inspection or otherwise. Neither Lovell and Partners Ltd nor any person in their employment has authority to make or give any warranty or representation in respect of this property.

Est 1879

LOVELLS

lovellsproperty.com | Telephone 723636