



Bright and spacious one bedroom apartment in Hampstead

Frognal
Hampstead, NW3 6AJ

Reception
18'7 x 14'3
5.66m x 4.34m

Kitchen
9'2 x 7'6
2.79m x 2.29m

Bedroom
12'11 x 10'8
3.94m x 3.25m

Bright and spacious one bedroom apartment situated on the first floor of this handsome period conversion in Hampstead.

The property comprises reception room, separate kitchen, large double bedroom and modern bathroom. The property also benefits from pretty garden views and storage.

Extremely well located for the Jubilee, Metropolitan, Northern and London Overground lines as well as plenty of bus routes into central London. The O2 Centre is also a short walk away offering shopping, cinema and gym facilities.

Available from 27th of September and offered furnished or unfurnished.

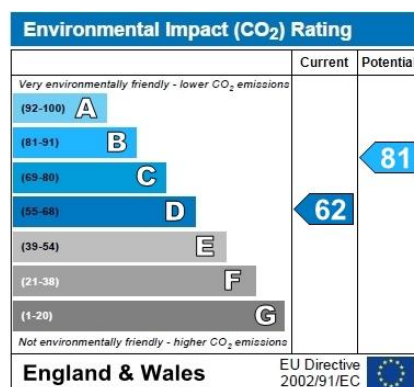
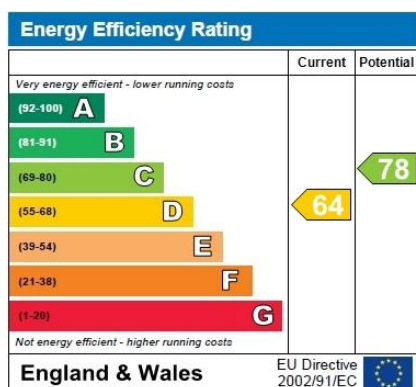
£350 Per Week
Fees apply

Contact us now to view this property

020 7794 0075

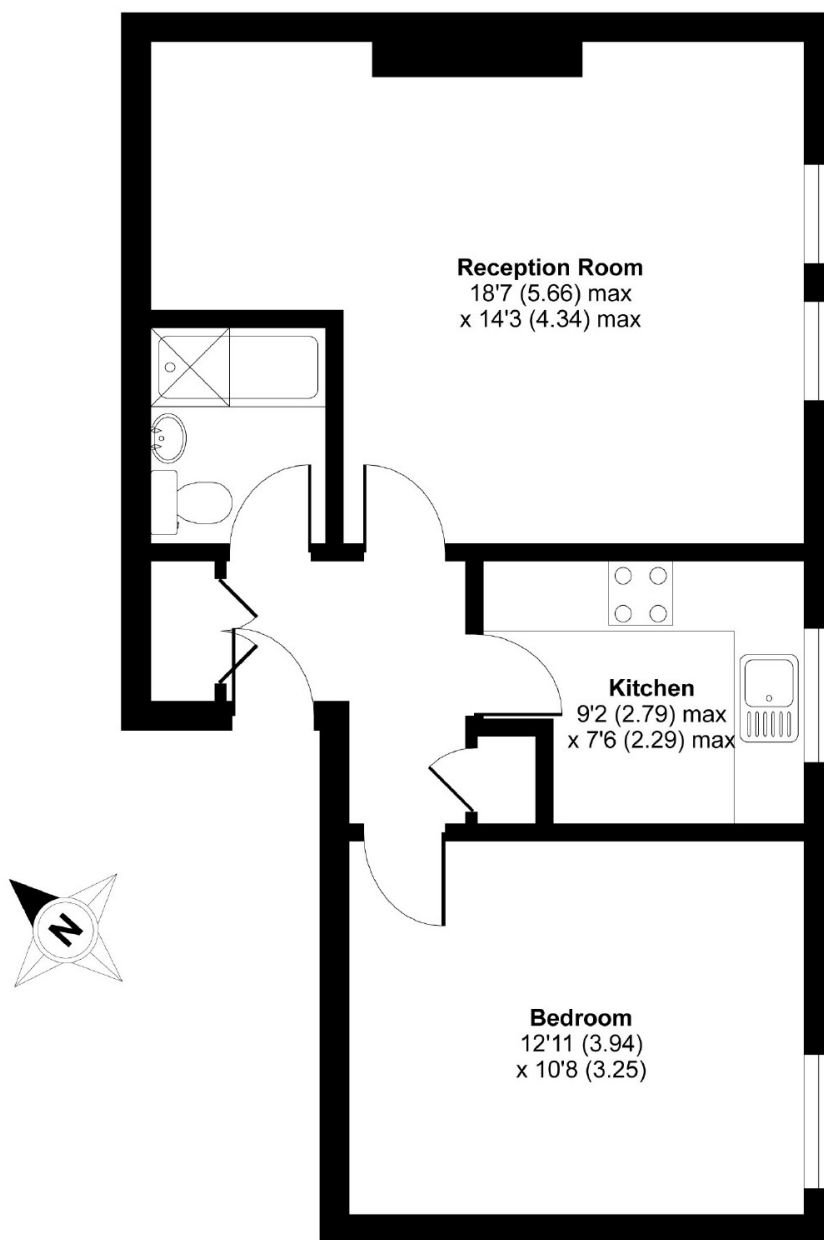
174 West End Lane, West Hampstead, London NW6 1SW

enquiries@dutchanddutch.com



Frognal, Hampstead, NW3

APPROX. GROSS INTERNAL FLOOR AREA 542 SQ FT 50.3 SQ METRES



FIRST FLOOR

Whilst every attempt has been made to ensure the accuracy of the floor plan contained here, measurements of doors, windows and rooms are approximate and no responsibility is taken for any error, omission or misstatement. These plans are for representation purposes only as defined by RICS Code of Measuring Practice and should be used as such by any prospective purchaser. Specifically no guarantee is given on the total square footage of the property if quoted on this plan. Any figure given is for initial guidance only and should not be relied on as a basis of valuation.

Copyright nichecom.co.uk 2015 Produced for Dutch & Dutch REF : 62716