



### Newly refurbished 3 bedroom flat

Brondesbury Park  
Brondesbury, NW6 7DW

<b>Reception</b> 15'9 x 13'6 4.80m x 4.11m	<b>Bedroom 3</b> 9'3 x 8'6 2.82m x 2.59m
<b>Bedroom 1</b> 14'9 x 13'4 4.50m x 4.06m	<b>Kitchen</b> 14'9 x 9'10 4.50m x 3.00m
<b>Bedroom 2</b> 14'9 x 9'11 4.50m x 3.02m	

**\*\*NO TENANT ADMINISTRATION FEES\*\***

Substantial three bedroom apartment (1013 sq ft / 94 sq m) situated on the ground floor of this well maintained mansion block in Brondesbury Park.

Comprising large reception, newly fitted modern kitchen, two spacious double bedrooms, one further smaller bedroom and family bathroom. The property benefits from lateral space and lots of storage as well as new parquet style wood flooring and access to the well maintained communal gardens.

Located within walking distance of the Jubilee and London Overground lines.

Offered unfurnished and available from the 12th of May 2018.

**£2,000 Per Month**

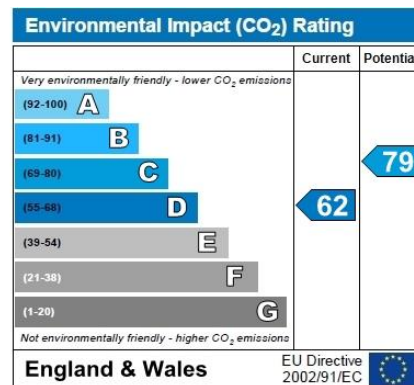
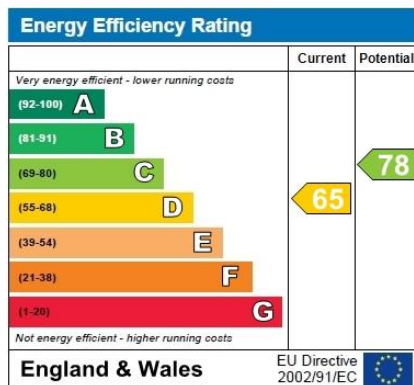
Contact us now to view this property

**020 7794 0075**

174 West End Lane, West Hampstead, London NW6 1SW

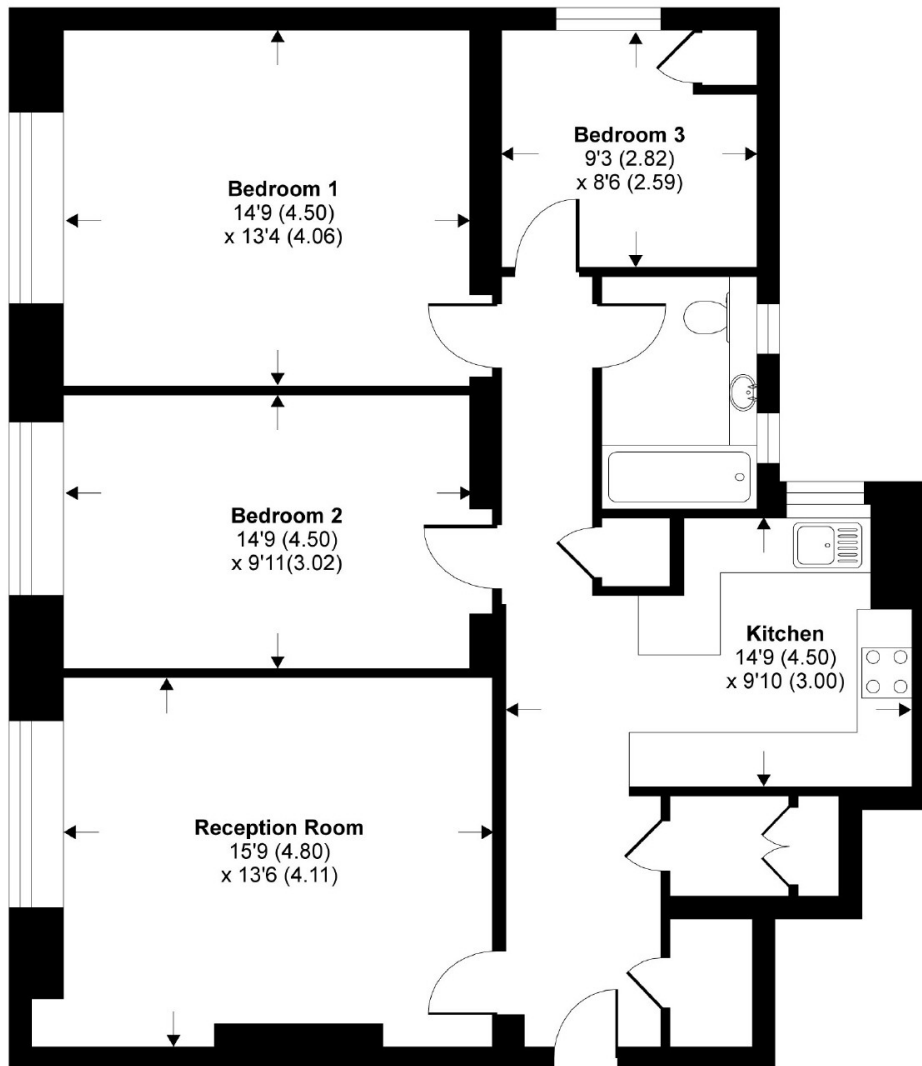
[enquiries@dutchanddutch.com](mailto:enquiries@dutchanddutch.com)





## Elstow Grange, Brondesbury Park, London, NW6

APPROX. GROSS INTERNAL FLOOR AREA 1013 SQ FT 94 SQ METRES



**GROUND FLOOR**

Whilst every attempt has been made to ensure the accuracy of the floor plan contained here, measurements of doors, windows and rooms are approximate and no responsibility is taken for any error, omission or misstatement. These plans are for representation purposes only as defined by RICS Code of Measuring Practice and should be used as such by any prospective purchaser. Specifically no guarantee is given on the total square footage of the property if quoted on this plan. Any figure given is for initial guidance only and should not be relied on as a basis of valuation.

Copyright nichecom.co.uk 2016 Produced for Dutch & Dutch REF : 141037