



Beswick Mews West Hampstead, NW6 1XT

Reception

17'7 x 10'7

5.36m x 3.23m

Kitchen

10'7 x 10'7

3.23m x 3.23m

Bedroom

13'3 x 8'7

4.04m x 2.62m

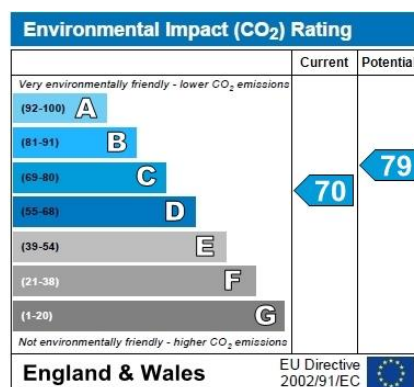
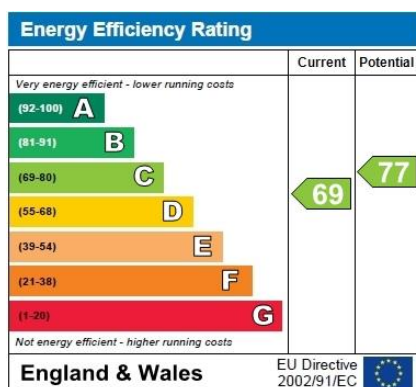
Located in a very popular development in West Hampstead is this bright, spacious one bedroom purpose built flat with its own entrance and balcony.

Incredibly well situated for both West Hampstead and Finchley Road transport including Jubilee & Metropolitan lines, Thameslink and London Overground. It is also a short walk from the O2 shopping centre.

The accommodation comprises a spacious reception room, fitted kitchen with integrated appliances, double bedroom with wardrobes, and bathroom. Other benefits include own entrance, private balcony and generous storage space throughout.

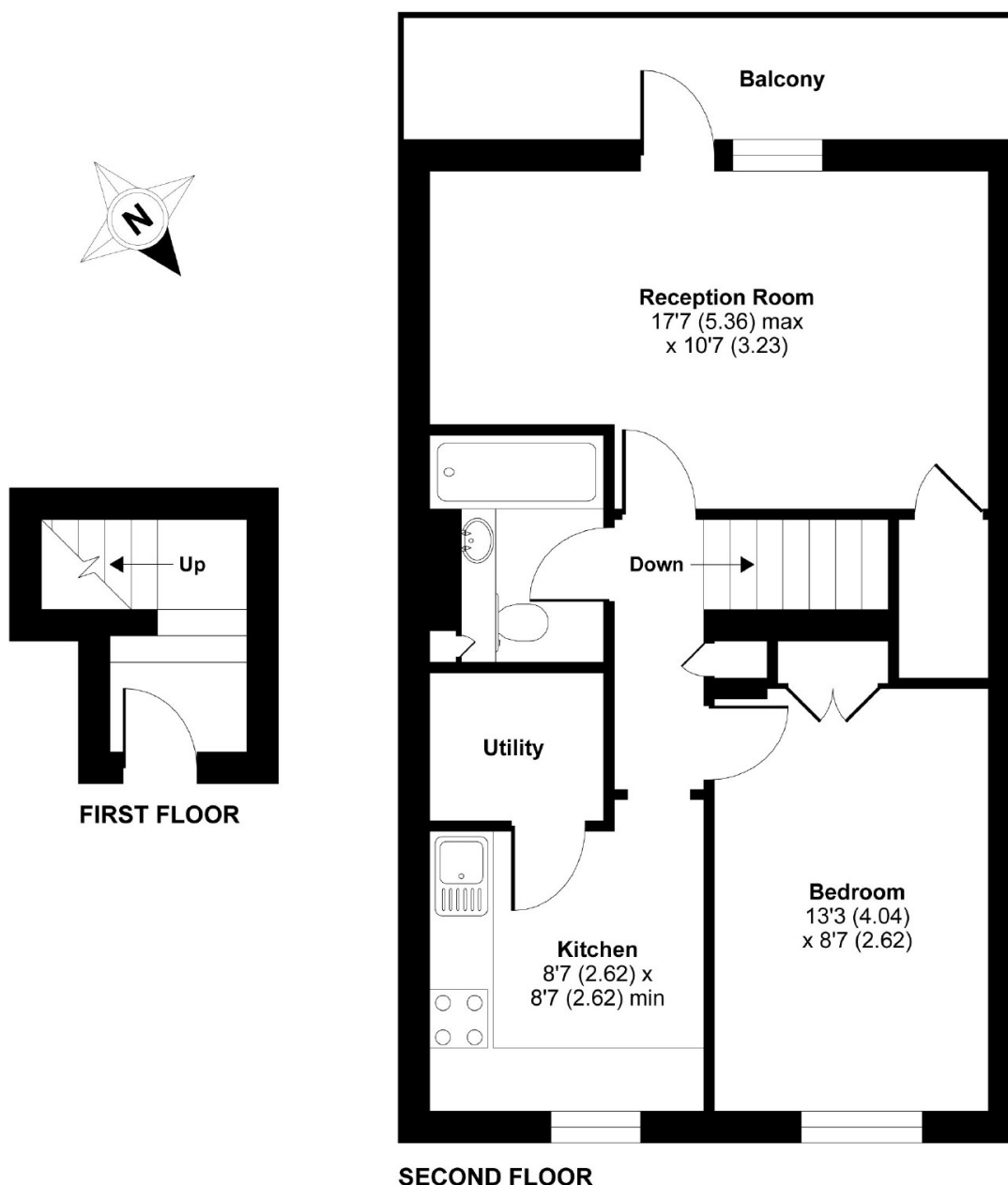
Heating and hot water are included in the service charge.

Asking Price £395,000
Leasehold



Beswick Mews, London, NW6

APPROX. GROSS INTERNAL FLOOR AREA 561 SQ FT 52.1 SQ METRES



Whilst every attempt has been made to ensure the accuracy of the floor plan contained here, measurements of doors, windows and rooms are approximate and no responsibility is taken for any error, omission or misstatement. These plans are for representation purposes only as defined by RICS Code of Measuring Practice and should be used as such by any prospective purchaser. Specifically no guarantee is given on the total square footage of the property if quoted on this plan. Any figure given is for initial guidance only and should not be relied on as a basis of valuation.

Copyright nichecom.co.uk 2017 Produced for Dutch & Dutch REF : 208511