



## Loveridge Mews Kilburn, NW6 2DP

**Living Room**  
6.65x4.29  
21'10" x 14'1"

**Bedroom**  
3.07x2.77  
10'1" x 9'1"

We are pleased to offer a selection of redeveloped and beautifully finished one bedroom flats in Kilburn.

This top floor one bedroom flat comprises a very bright and spacious living room, half open plan fully equipped kitchen, double bedroom and large bathroom.

The property is conveniently located within a short walk from Kilburn Underground Station (Jubilee) and the tube, overground and Thameslink lines at West Hampstead.

The flat is offered unfurnished (or furnished - subject to negotiation) and available immediately.

(Please be advised that the photos are from our top floor show flat but all the flats have the same finish and similar layouts.)

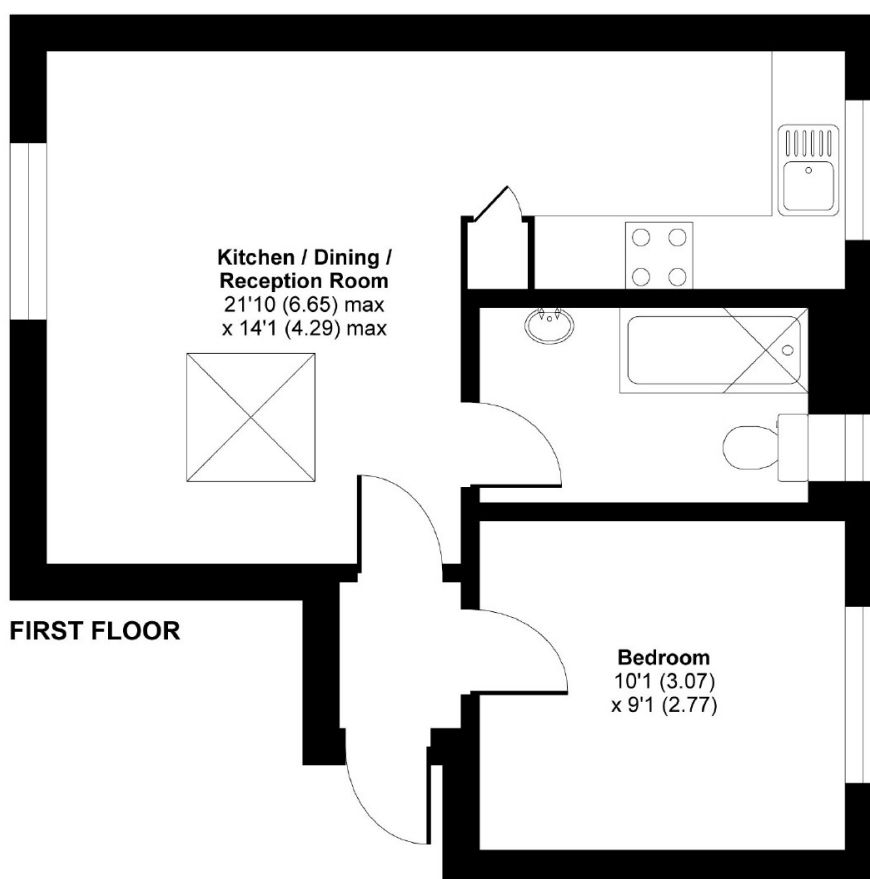
**£1,500 Per Month**  
Fees Apply



AWAITING EPC

## Loveridge Mews, London, NW6

APPROX. GROSS INTERNAL FLOOR AREA 394 SQ FT 36.6 SQ METRES



Whilst every attempt has been made to ensure the accuracy of the floor plan contained here, measurements of doors, windows and rooms are approximate and no responsibility is taken for any error, omission or misstatement. These plans are for representation purposes only as defined by RICS Code of Measuring Practice and should be used as such by any prospective purchaser. Specifically no guarantee is given on the total square footage of the property if quoted on this plan. Any figure given is for initial guidance only and should not be relied on as a basis of valuation.

Copyright nichecom.co.uk 2018 Produced for Dutch & Dutch REF : 317807