



Rose Joan Mews
West Hampstead, NW6 1DQ

Reception

22'4 x 12'6

6.81m x 3.81m

Kitchen

15'1 x 13'1

4.60m x 3.99m

Bedroom 1

11'11 x 11'2

3.63m x 3.40m

Bedroom 2

13'2 x 9'8

4.01m x 2.95m

This brand new mews house in West Hampstead has been finished to an extremely high specification and offers modern living throughout.

Comprising open plan living on the ground floor with the living and kitchen spaces separated by a dramatic glass and wooden staircase, two double bedroom suites upstairs with their own bathrooms and wardrobes, downstairs WC and terrace.

The property is located on a quiet mews street in West Hampstead close the Jubilee, London Overground and Thameslink lines.

Freehold.

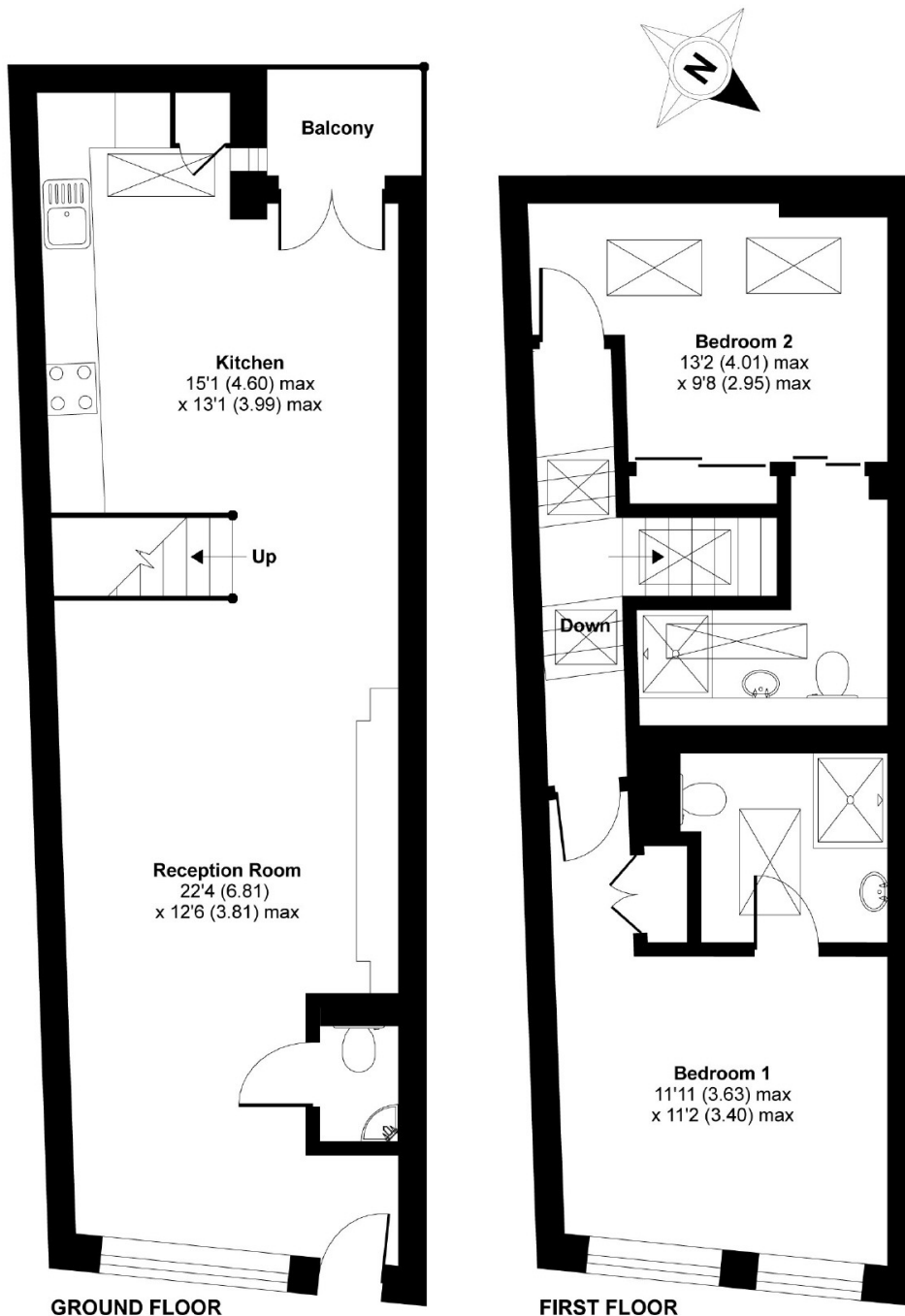
Asking Price £875,000



AWAITING EPC

Rose Joan Mews, London, NW6

APPROX. GROSS INTERNAL FLOOR AREA 954 SQ FT 88.6 SQ METRES



Whilst every attempt has been made to ensure the accuracy of the floor plan contained here, measurements of doors, windows and rooms are approximate and no responsibility is taken for any error, omission or misstatement. These plans are for representation purposes only as defined by RICS Code of Measuring Practice and should be used as such by any prospective purchaser. Specifically no guarantee is given on the total square footage of the property if quoted on this plan. Any figure given is for initial guidance only and should not be relied on as a basis of valuation.

Copyright nichecom.co.uk 2018 Produced for Dutch & Dutch REF : 250903