



## Greenfield Gardens London, NW2 1HU

### Reception Room

13'10 x 12'5  
4.22m x 3.78m

### Dining Room

12'5 x 12'5  
3.78m x 3.78m

### Kitchen / Breakfast Room

12'5 x 12'5  
3.78m x 3.78m

### Bedroom 1

14'9 x 12'5  
4.50m x 3.78m

### Bedroom 2

12'2 x 11'11  
3.71m x 3.63m

### Bedroom 3

9' x 8'  
2.74m x 2.44m

A well kept three bedroom semi detached house (1,213sq ft/112.6 sq m) ideally located on the tree-lined Greenfield Gardens. Chain Free.

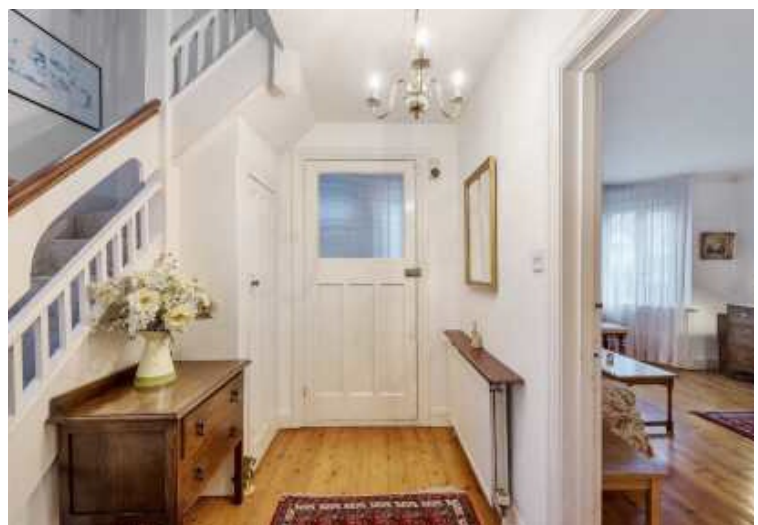
Comprising reception room, dining room, 3 double bedrooms (2 complete with built in storage), kitchen/breakfast room, family bathroom and separate WC.

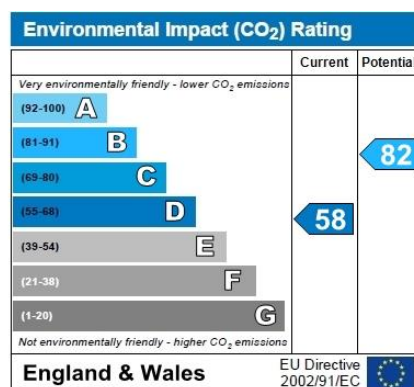
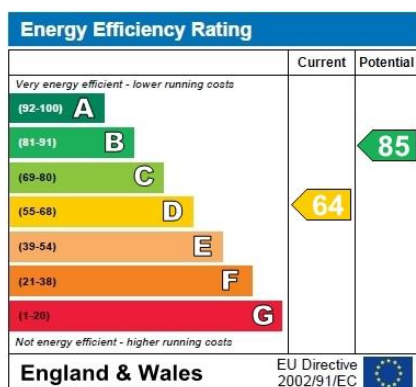
Further benefits include a large private south-west facing rear garden, sizeable entrance hall featuring a cloakroom and planning permission to extend granted.

The property is well situated for the shopping and transport facilities of Cricklewood Broadway.

**Asking Price £885,000**

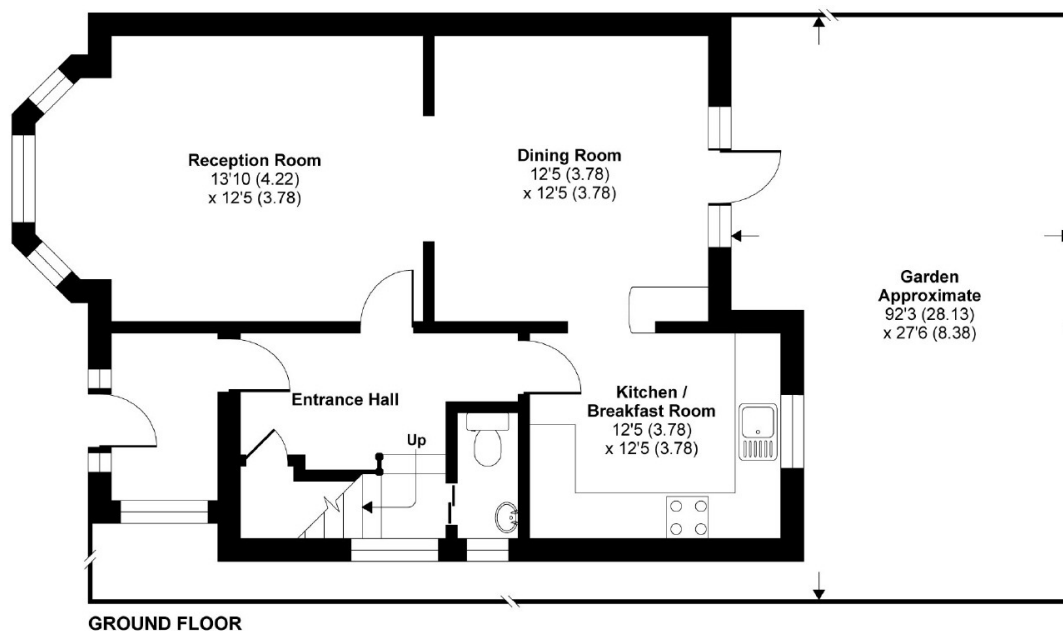
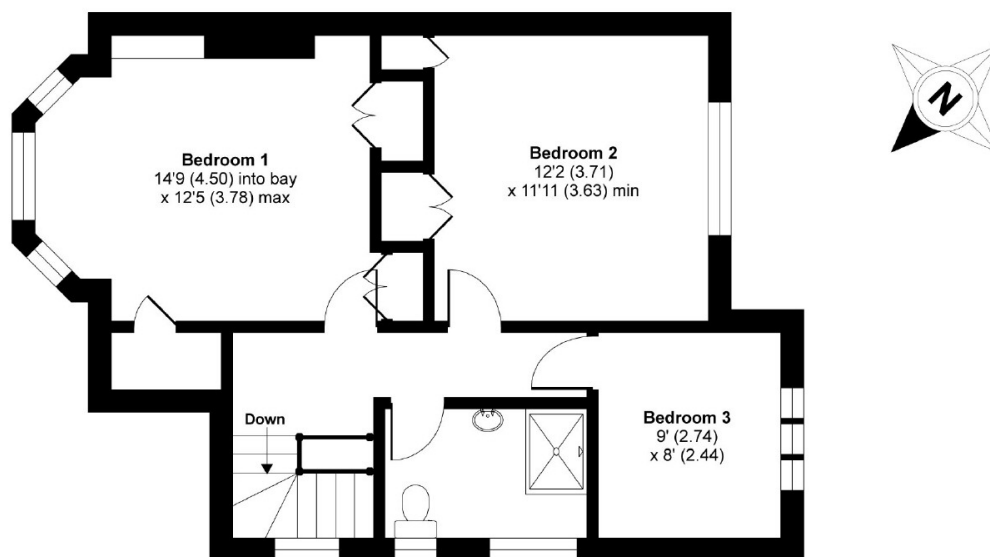






## Greenfield Gardens, London, NW2

APPROX. GROSS INTERNAL FLOOR AREA 1213 SQ FT 112.6 SQ METRES



Whilst every attempt has been made to ensure the accuracy of the floor plan contained here, measurements of doors, windows and rooms are approximate and no responsibility is taken for any error, omission or misstatement. These plans are for representation purposes only as defined by RICS Code of Measuring Practice and should be used as such by any prospective purchaser. Specifically no guarantee is given on the total square footage of the property if quoted on this plan. Any figure given is for initial guidance only and should not be relied on as a basis of valuation.

Copyright nichecom.co.uk 2018 Produced for Dutch & Dutch REF : 415435