



## Wardian, East Tower E14

### Living Area

3.9m x 8.46m  
12'10" x 27'9"

### Bedroom 1

3.02m x 3.82m  
9'11" x 12'6"

### Bedroom 2

2.65m x 4.1m  
8'8" x 13'5"

A two bed apartment (1018sqft) on the 21st floor of the favoured East Tower in the highly anticipated Wardian development with fabulous views over London and Docklands.

The apartment comprises open plan kitchen/reception, two double bedrooms with built-in storage (master with en-suite), separate family bathroom and a wrap around balcony offering panoramic views.

The finish throughout is meticulous featuring beautifully designed marble-topped kitchen units, smoked oak timber flooring, fitted broadloom carpets in the bedrooms and bespoke marble tiling in the bathrooms. The development benefits from an athletic standard swimming pool, gym, cinema room and a carefully cultivated natural landscape courtesy of Ballymore's partnership with Ecoworld.

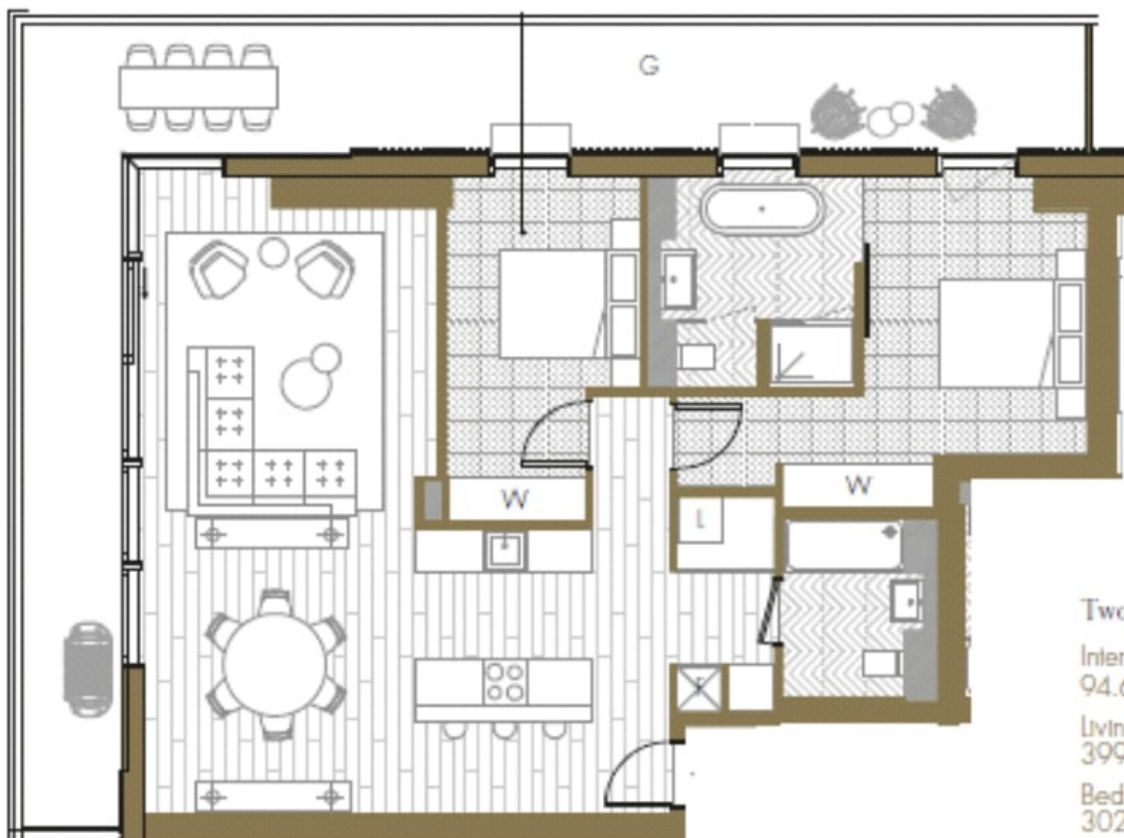
**Asking Price £1,045,000**







AWAITING EPC



### Two Bedroom

Internal Area  
94.6 sq m / 1018 sq ft

Living Area  
3990 x 8462 mm

Bedroom 1  
3020 x 3820 mm

Bedroom 2  
2650 x 4100 mm

Garden  
37.2 sq m / 401 sq ft