

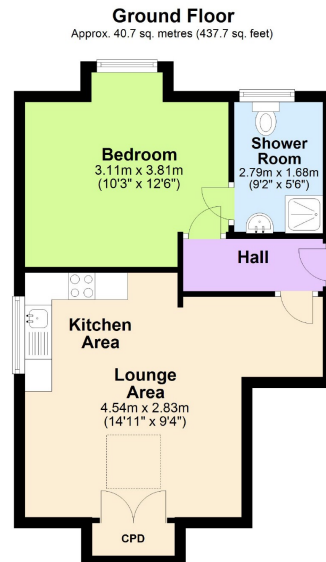


**The Griffs Lawford Lane, Rugby, CV22 7JP**

**£120,000**



## The Griffs Lawford Lane, Rugby, CV22 7JP



Total area: approx. 40.7 sq. metres (437.7 sq. feet)

Attention first time buyers and buy to let investors. Absolutely nothing to do here! Move straight in to this luxurious one bedroom apartment on the second floor of a brand new complex. Communal Gardens, allocated parking, superb kitchen with integral appliances and fabulous shower room.

Lawford Lane is within easy reach of chemists, road networks, overlooks fields and has regular bus routes nearby.

As the seller's agent we are not surveyors or conveyancing experts and as such we cannot and do not comment on the condition of the property or issues relating to title or other legal issues that may affect this property, unless we have been made aware of such matters. Interested parties should employ their own professionals to make such enquiries before making any transactional decisions.

## Communal Hall

## Entrance Hall

Open Plan Kitchen Lounge  
14'11 x 9'4 (4.55m x 2.84m)

Bedroom One  
10'3 x 12'6 (3.12m x 3.81m)

## Shower Room

