



York Court, 75 Milwain Road, Burnage

£650 PCM



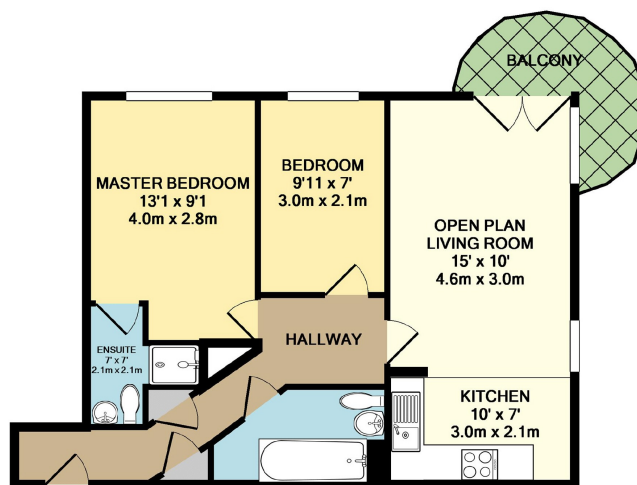
York Court | Burnage

A modern, two bedroomed, furnished, ground floor apartment well presented throughout offering allocated parking, open plan living, two bathrooms and a private balcony. Located close by to local amenities including shops and transport links, in brief, the accommodation comprises: entrance hallway, cloak cupboard, open plan living area with a modern kitchen and french doors leading onto the private balcony, master bedroom with contemporary en-suite, second double bedroom and a modern three piece suite bathroom. Externally there are mature communal grounds and gated parking. AVAILABLE END OF APRIL 2015.

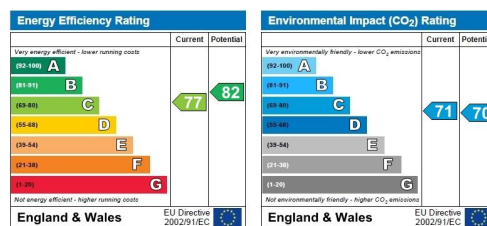
Square Footage: 540 **Council Tax Band:** B
Sat Nav Directions: M19 2PT

To secure the property we require a £150.00 holding fee plus our agency fee as indicated below. Should the tenancy not proceed these are non-refundable.

One person £210.00 inc VAT, two people £300.00 inc VAT, each additional applicant and/or guarantor £90 inc VAT. The balance of the deposit (1 month's rent plus £150.00 unless otherwise stated) and the first month's rent are required in cleared funds prior to the start date of the tenancy.



TOTAL APPROX. FLOOR AREA 540 SQ.FT. (50.2 SQ.M.)
Made with Metropix ©2014



Didsbury Branch
764B Wilmslow Road, Manchester, Greater Manchester, M20 2DR | 0161 249 5160
didsburylettings@julianwadden.co.uk | www.julianwadden.co.uk

Please note these particulars have been prepared as a general guidance only. A survey has not been carried out, nor services, appliances or fittings tested. Room sizes should not be relied upon for furnishing purposes and are approximate. Floor plans are for guidance and illustration only and may not be to scale. Neither Julian Wadden & Co, nor the vendor, accept any responsibility in respect of these particulars and if there are any matters likely to affect your decision to buy please consult your legal representative.

JULIAN WADDEN & COMPANY Experts in Property