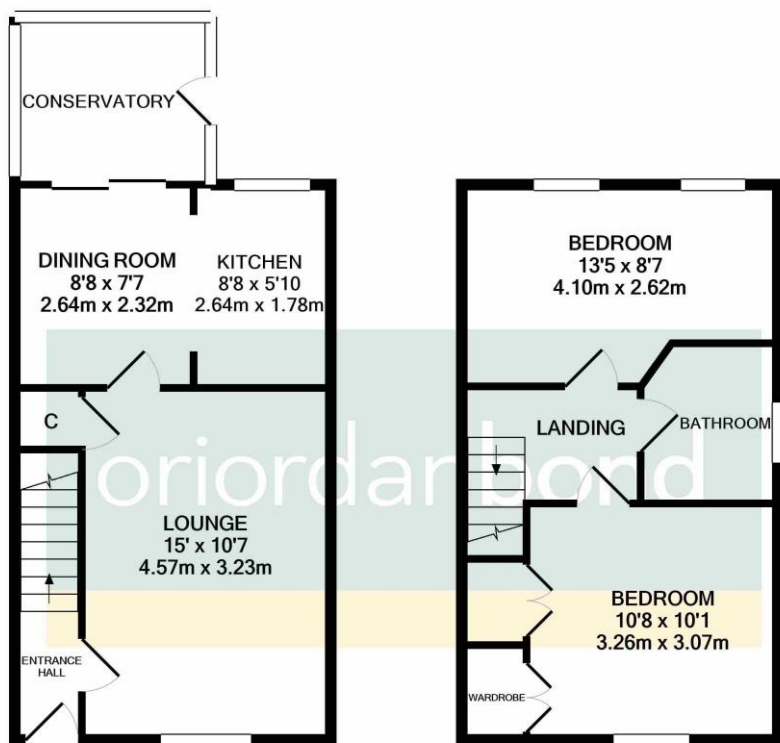




Hedgely Court
Buckingham Fields, Northampton

oriordanbond



Whilst every attempt has been made to ensure the accuracy of the floor plan contained here, measurements of doors, windows, rooms and any other items are approximate and no responsibility is taken for any error, omission, or mis-statement. This plan is for illustrative purposes only and should be used as such by any prospective purchaser. The services, systems and appliances shown have not been tested and no guarantee as to their operability or efficiency can be given

Made with Metropix ©2020

Hedgely Court

Buckingham Fields
Northampton NN4 8LT

PRICE £200,000

A modern two bedroom end of terrace property, situated in this popular cul-de-sac location, within Buckingham Fields. The property is located in the school catchment area for Queen Eleanor Primary Academy and Hunsbury Park Primary.

The accommodation comprises entrance hall, sitting room, kitchen open to dining room with patio doors to a timber-built lean-to conservatory, two first floor double bedrooms and a family bathroom. Benefits to the property include uPVC double glazing and gas radiator heating. Outside is a front garden with driveway to side and double gates giving access to a carport providing further secure parking. To the rear is an enclosed garden which is mainly laid to lawn with patio area. (B/696/M)

Additional Information

- Northampton Town Centre: 2.2 Miles
- Northampton Train Station: 2 Miles
- Council Tax Band: B
- Energy Efficiency Rating: TBC

Viewing

Viewing strictly by appointment – details below

Disclaimer

O'Riordan Bond Estate Agents Limited has not tested apparatus, equipment, fittings or services and so cannot verify they are in working order. The buyer is advised to obtain verification from their solicitor or surveyor.

O'Riordan Bond Hunsbury
01604 706007

hunsbury@oriordanbond.co.uk

