



## Chalk Farm, NW1

£1,950 Per week

**Dexters**





## Ferdinand Street, London, NW1

Located on the site of a former Victorian piano factory, this four double bedroom, four bathroom property has been authentically refurbished as part of the new Chappell Lofts development.

This exceptional property evokes Victorian grandeur with a meticulous refurbishment including parquet flooring throughout, a cast iron feature staircase and quality fixtures and fittings.

On the ground floor is a large stylish high-specification kitchen with feature island and guest WC. A bespoke iron staircase leads down to an interior designed reception room with panelled walls and access to a small patio. The upper two floors comprise of four double bedrooms, each with fitted wardrobes and luxury en suite bathrooms, with the addition of a private balcony accessed from the master room.

Ferdinand Street, in the heart of Chalk Farm and Camden, is ideally situated for the famous Stables Market, local shops, bars, restaurants and transport links.

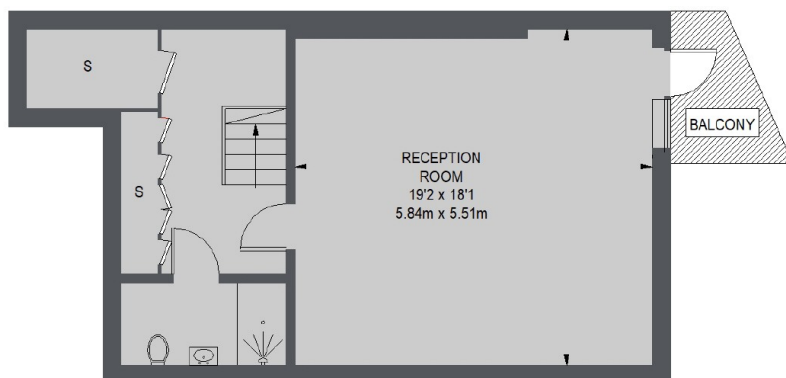
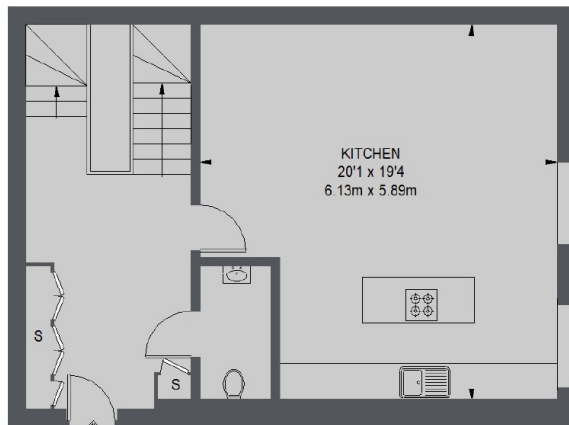
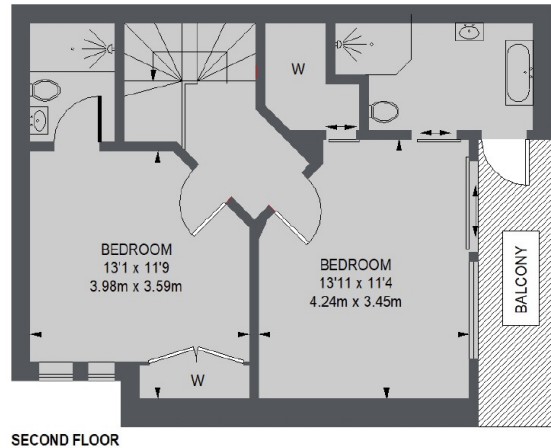
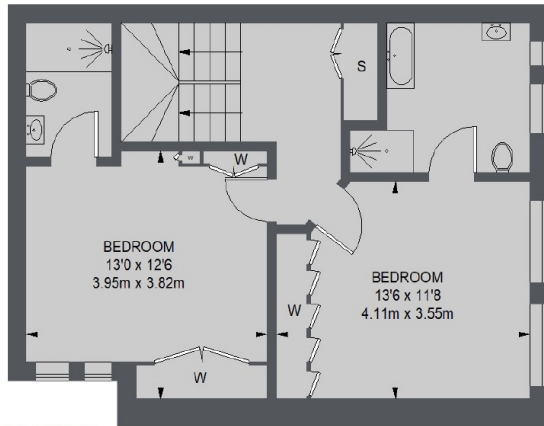
### Features

- Quality Refurbishment
- Over 2,100 sq ft
- Four Double Bedrooms
- Four Ensuite Bathrooms
- Two Private Balconies
- Underfloor Heating





# Ferdinand Street, London, NW1



TOTAL APPROX. FLOOR AREA 2139 SQ. FT. (198.72 SQ. M.)

**Dexters**

Tufnell Park  
159 Fortress Road, Kentish  
Town, London, NW5 2HR  
Lettings  
020 7267 5500

Energy Rating: TBC. We aim to make our particulars both accurate and reliable. However they are not guaranteed; nor do they form part of an offer or contract. If you require clarification on any points then please contact us, especially if you're traveling some distance to view. Please note that appliances and heating systems have not been tested and therefore no warranties can be given as to their good working order.

**RICS** Regulated  
Estate Agent  
and Letting Agent

[dexters.co.uk](http://dexters.co.uk)