



## Park Road, NW8

### £2,995,000

An elegant and spacious three bedroom apartment set on the fourth floor in one of St John's Wood's most sought after blocks.

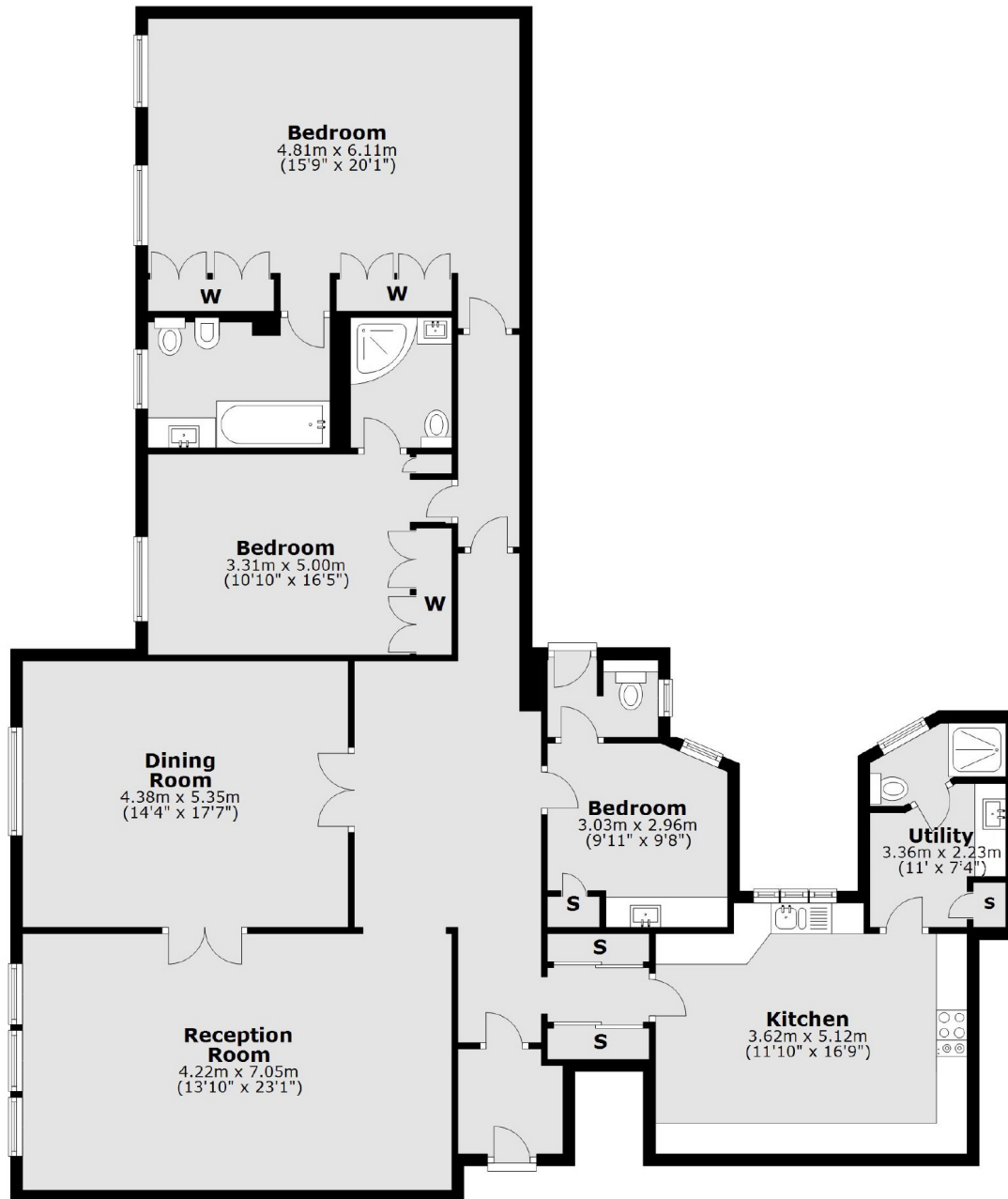
Backing onto the outer circle of Regent's Park, Abbey Lodge is a desired mansion block between Marylebone and St John's Wood.

### Features

- Three Bedrooms
- Three Bathrooms
- Fourth Floor
- 24 Hour Porter
- Communal Gardens
- High Ceilings

# Park Road, London, NW8

## Fourth Floor



Total area: approx. 181.0 sq. metres (1948.8 sq. feet)

# Dexters

St. John's Wood  
4-6 St Ann's Terrace  
London  
NW8 6PJ  
Sales  
020 7483 6300

Energy Rating: C. We aim to make our particulars both accurate and reliable. However they are not guaranteed; nor do they form part of an offer or contract. If you require clarification on any points then please contact us, especially if you're traveling some distance to view. Please note that appliances and heating systems have not been tested and therefore no warranties can be given as to their good working order.

 **RICS** | Regulated  
Estate Agent  
and Letting Agent

[dexters.co.uk](https://www.dexters.co.uk)