



Gloucester Avenue, NW1

£773 Per week

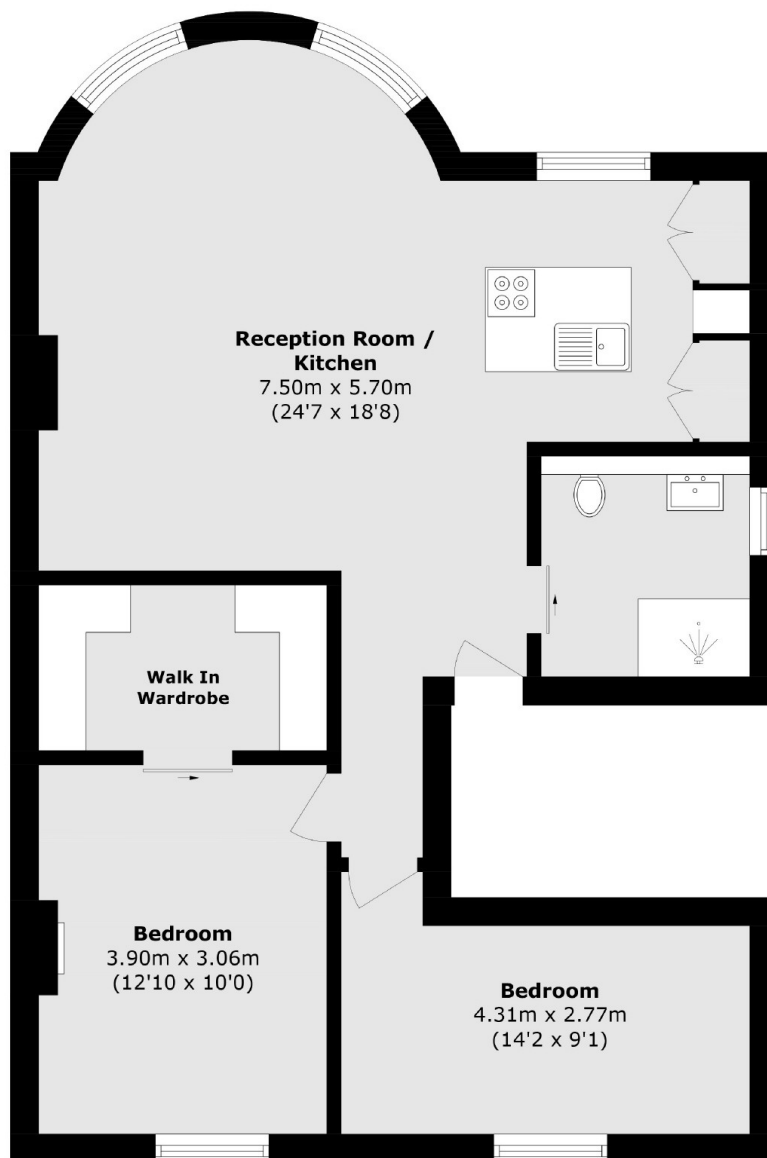
A modern two double bedroom apartment, on the top floor, located in Primrose Hill. The apartment has a bright reception room, two bedrooms, walk-in wardrobe in the principal bedroom and a modern bathroom.

Gloucester Avenue is located Regents Canal and within walking distance to local shops, restaurants, cafés and bars on Regents Park Road and Camden Town.

Features

- Two Bedrooms
- Modern Bathroom
- Top Floor Flat
- Great Location
- On Street Parking
- No Pets

Gloucester Avenue, London, NW1



Total area (approx.): 70.8 sq. m (762 sq. ft)